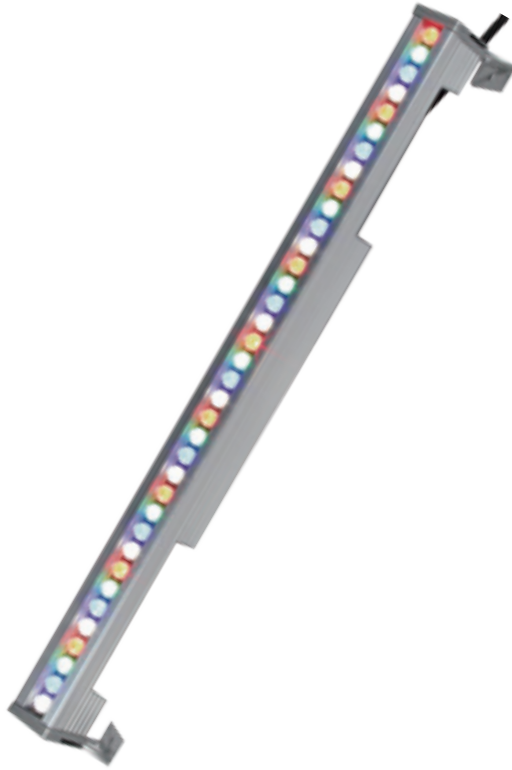


SL STRIP 400



The SL STRIP 400 LED luminaire is a compact linear wash luminaire delivering a bright narrow beam.

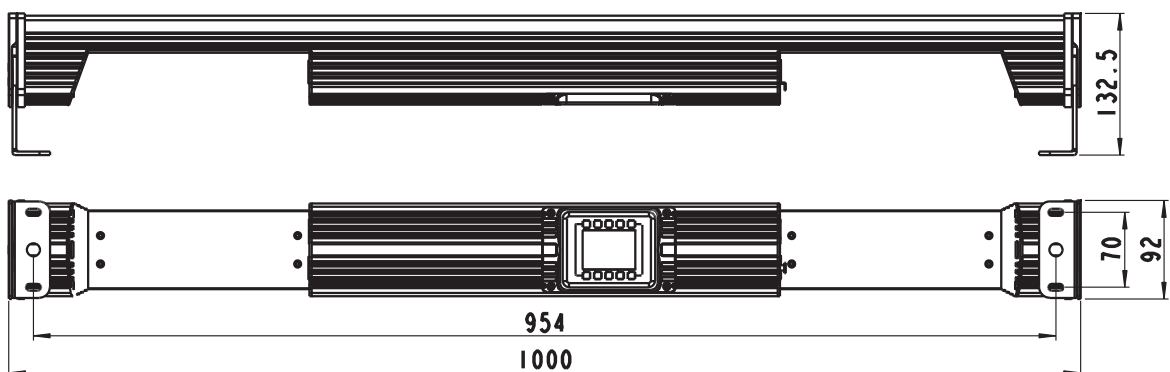
A wide choice of options makes the SL STRIP 400 suitable for a diverse variety of lighting design applications. Choose the RGBW LED option for washes of colour, or choose the Tunable White option for selective grazing and uplighting. For wet applications and outdoor environments, select the IP65 models.

Mounting brackets feature secure lock off and a tight profile to insure close placement to insure smooth beam spreads. The SL STRIP 400 Luminaire is fully RDM capable, ensuring fast convenient remote commissioning - ideal for installations where access to the luminaires is difficult.

Features :

- Rugged Construction
- Philips LumiLeds RGBW LED's for exceptional output and color
- Built-in color presets, effects and chases
- HSIC (Hue - Saturation - Intensity - Color temperature) operation mode
- 8 or 16-bit DMX-512A operation for smooth stepless fades
- On-board LCD Menu System for addressing and setup
- Remote configuration available via RDM
- PowerCon in and thru power connections
- 5-pin DMX-512A(RDM) in and thru connections

Drawing Diagram :



IP 20 model

Technical Specifications :

Version:

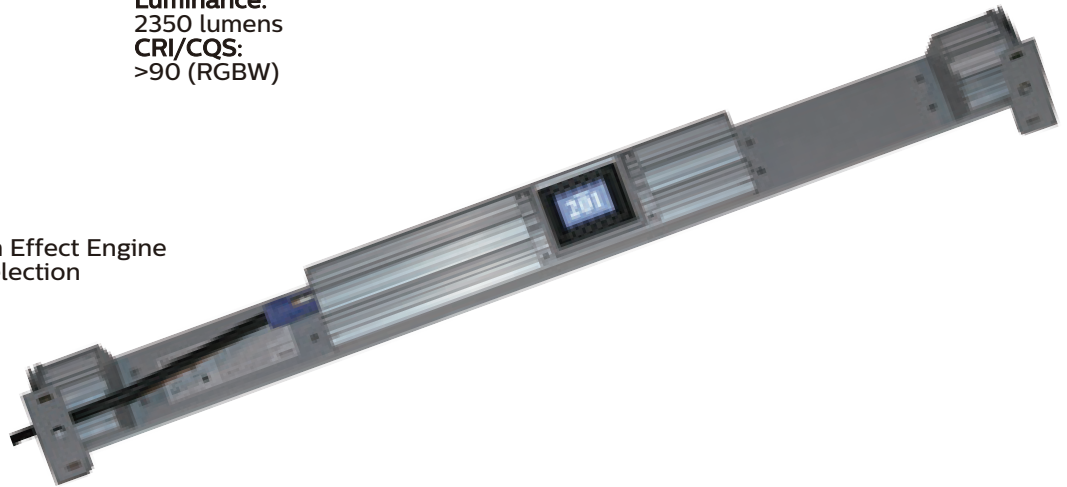
SL STRIP 400 RGBW, IP20 or IP65

Optics:10 degree beam angle
36 high power LEDs**Controls:**DMX-512A(RDM)
Local LCD control
Master/slave**Physical:**90-240VAC, 90W
1000mm x 92mm x 140mm, 6kg
CE**Luminance:**

2350 lumens

CRI/CQS:

>90 (RGBW)

Features:Color Gel filter preset
Chase - Strobe + Duration Effect Engine
LED & Tungsten Curves selection**Modes:**HSIC
8 bit RGBW
16 bit RGBW

Ordering Information :

SLSTRIP400RGBWIP20

88-095-4264-31

SL STRIP 400 RGBW IP20

SLSTRIP400RGBWIP65

88-095-4174-31

SL STRIP 400 RGBW IP65

SLSTRIP400TWIP20

88-095-4264-71

SL STRIP 400 Tunable White IP20

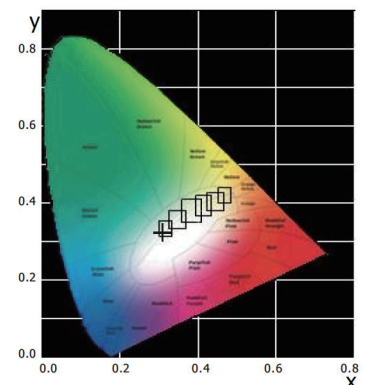
SLSTRIP400TWIP65

88-095-4174-71

SL STRIP 400 Tunable White IP65

Harmonize Color Calibration Technology

At the heart of all Showline products is Philips Harmonize Calibration technology. Harmonize is a proprietary, advanced LED color matching system, consisting of 3 correction modules: RGB, RGBW and Cool White/Warm White. Every Showline fixture undergoes rigorous testing to provide you with consistent control of color and intensity as well as output of the highest quality.



Philips Group 2012. All rights reserved.

The Company reserves the right to make any variation in design or construction to the equipment described. E&OE. Philips Entertainment delivers fully integrated lighting solutions; from simple lamps to complete systems designed with the specific needs of the entertainment and specialized display lighting markets.