

VISION.NET 4-WAY SPLITTER MODULE

OVERVIEW

This document provides installation and operation instructions for the following product(s):

PRODUCT NAME	ORDER CODE
Vision.Net 4-Way Splitter Module	53904-004

INSTALLATION AND SET UP

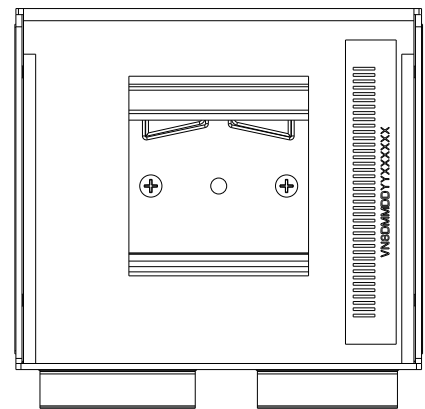
DIN RAIL MOUNTING

To mount Vision.Net 4-Way Splitter Module on compatible TS35/7.5 DIN rail:

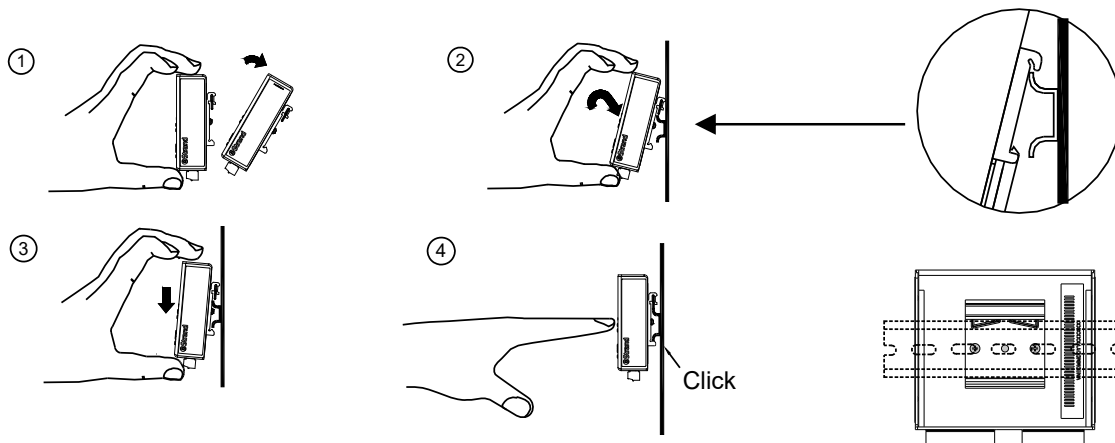
- Step 1. Tilt the module backwards slightly.
- Step 2. Fit the module over the top hat of the DIN rail.
- Step 3. Slide module down until fully engaged with the top hat.
- Step 4. Push the module forward to engage to the DIN rail fully.
- Step 5. Gently rock the module back and forth to assure it's locked in place.

To remove unit(s) from DIN rail:

- Step 1. Turn off and disconnect wiring.
- Step 2. Gently pry the module from the bottom using a slotted screwdriver if required.



SURFACE MOUNTING



To mount Vision.Net 4-Way Splitter Module on a surface:

- Step 1. Determine appropriate orientation of your module for your application - vertical or horizontal.
- Step 2. Using the surface mount bracket as a template mark the location of the keyholes on the mounting surface.
- Step 3. Install appropriate fasteners for your application. The keyholes accept two #6 rounded head screws.
- Step 4. Remove DIN rail bracket from module by removing two Phillips head screws with a #2 driver. Save bracket for future use.
- Step 5. Attach surface mount bracket to module using two Phillips head screws observing the desired orientation.
- Step 6. Hang the module on the fasteners installed in Step 3 and hand-tighten.

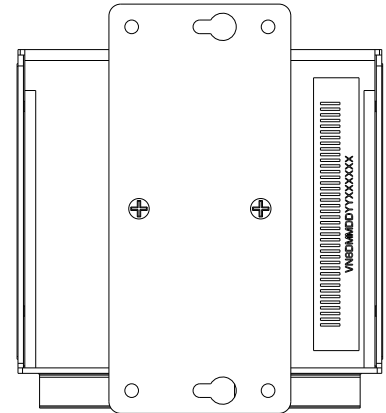
VISION.NET 4-WAY SPLITTER MODULE

REQUIREMENTS

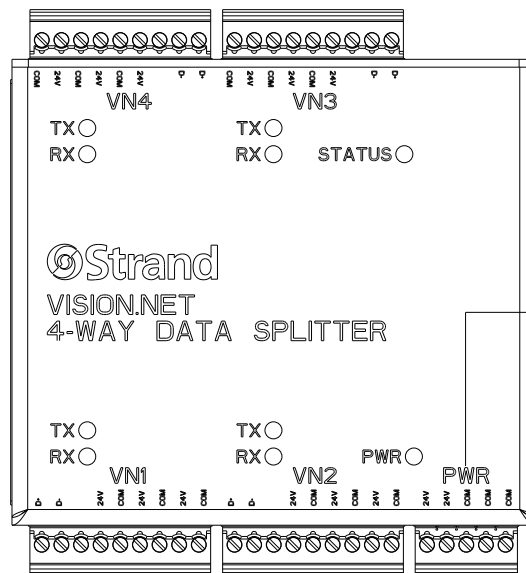
- The Vision.Net 4-Way Splitter Module requires power from a separate +24 V DC power source connected with 16-28 AWG wire. Consult a Strand representative for specifying an appropriate rated power supply.
- The recommended wire for interfacing Vision.Net is Belden 1583a (Cat5e, 24 AWG, Solid).

To connect Vision.Net 4-Way Splitter Module to Digital Input Sources:

- Remove applicable screw-down connector from module.
- Prepare wire and insert into connector observing polarity of the source, if required. Use a slotted screwdriver to tighten the screw down terminals.
- Align and evenly re-insert the connector back into the module.



SURFACE MOUNT BRACKET CAN BE MOUNTED HORIZONTALLY OR VERTICALLY AS SHOWN



LED INDICATORS

PWR: Solid green when module is powered
STATUS: Flashes green to indicate activity

TX: Flashes green when signal transmitted
RX: Flashes red when signal received

NOTE: The module contains a secondary DC power terminal that acts as a throughput only. Never connect multiple power supplies in parallel.

The third grounding terminal is provided for interfacing a digital ground to earth where required.

WARNINGS AND NOTICES

When using electrical equipment, basic safety precautions should always be followed including the following:

- For indoor, dry locations use only. Do not use outdoors.
- Do not mount near gas or electric heaters.
- Equipment should be mounted in locations and at heights where it will not readily be subjected to tampering by unauthorized personnel.
- The use of accessory equipment not recommended by the manufacturer may cause an unsafe condition and void warranty.
- Not for residential use. Do not use this equipment for other than intended use.



©2021 Signify Holding. All rights reserved.

All trademarks are owned by Signify Holding or their respective owners. The information provided herein is subject to change, without notice. Signify does not give any representation or warranty as to the accuracy or completeness of the information included herein and shall not be liable for any action in reliance thereon. The information presented in this document is not intended as any commercial offer and does not form part of any quotation or contract, unless otherwise agreed by Signify. Data subject to change.

CUSTOMER SERVICE

If you have any questions regarding this product, please contact Customer Service by phone at +1 214-647-7880 or by email at entertainment.service@signify.com.