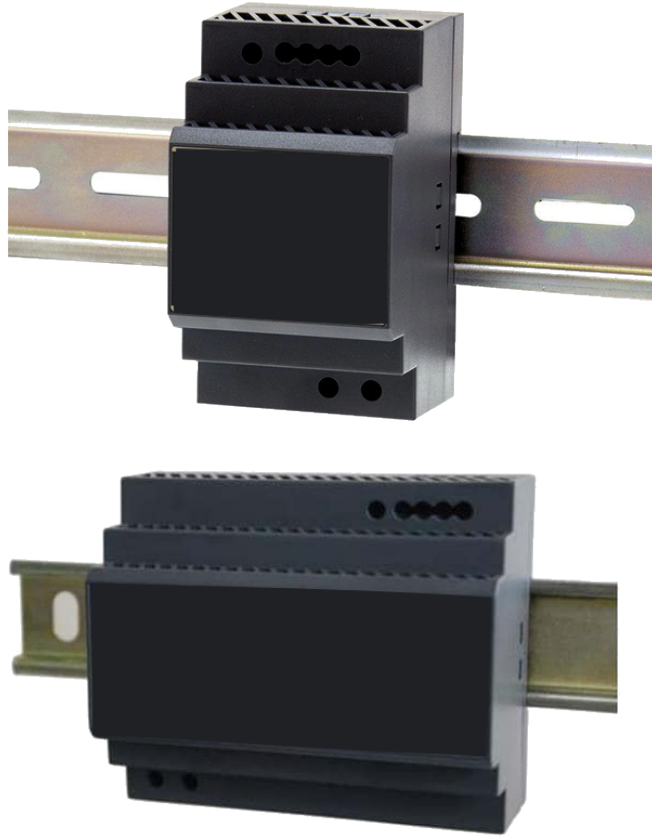




VISION.NET DIN RAIL POWER SUPPLIES



The Strand Vision.Net DIN Rail Power Supplies are DIN rail mountable PSUs that convert incoming power from 100-277V AC systems to regulated 24V DC power to all Vision.Net modules in a DIN rail tray or enclosure. Available in 60W and 150W versions, there is a PSU available for any sized application. With a convection cooled, fanless design, these UL listed power supplies offer quiet operation and power where you need it.





VISION.NET DIN RAIL POWER SUPPLIES

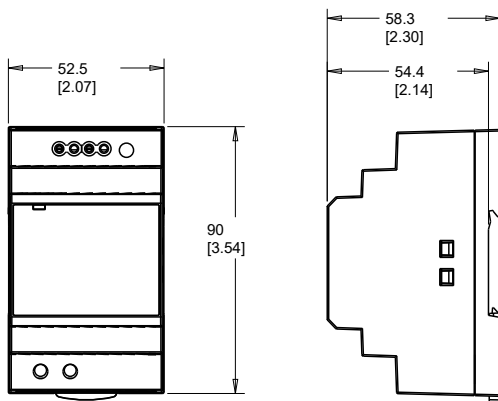
FEATURES AND BENEFITS

- **100-277V AC power supply units** – power solutions for your distribution voltage.
- **60W and 150W versions** – wattage options for any sized application.
- **Standard 35mm DIN Rail mounting** – easy to install using either Strand or off-the-shelf DIN rail mounting materials.
- **Convection cooled** – fanless design for quiet operation.
- **UL listed** – safe and secure operation.

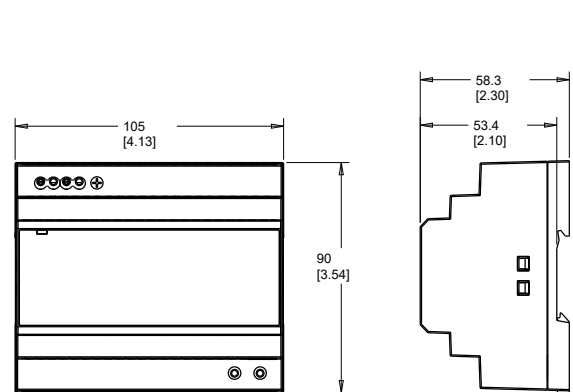
LIMITED WARRANTY

Every Strand product is backed by a minimum 2-year limited warranty against manufacturing defects and workmanship. Refer to the Strand Limited Warranty Card available at www.strandlighting.com/global/support/warranty for more details.

60W



150W





VISION.NET DIN RAIL POWER SUPPLIES

60W

150W

POWER

Input voltage		85-264 V AC, 47-63 Hz (277 V Operable)	85-264 V AC, 47-63 Hz (277 V Operable)
AC input current	@ 115 V AC	1.2 A	3 A
	@ 230 V AC	0.8 A	1.6 A
Output voltage		24 V DC	24 V DC
Rated output current	@ 115 V AC	2.5 A	5.31 A
	@ 230 V AC	2.5 A	6.25 A
Rated output power	@ 115 V AC	60 W	127.4 W
	@ 230 V AC	60 W	150 W

CONNECTIONS

AC power in	Class 2, screw-down terminal	Class 2, screw-down terminal
DC power out	2x screw-down terminal	2x screw-down terminal
Recommended wire type	14-18 AWG	14-18 AWG

PHYSICALS

Color	Black	Black
Finish	Smooth texture	Smooth texture
Construction	Plastic	Plastic
DIN rail compatibility	TS35/7.5	TS35/7.5

DIMENSIONS (L x W x D)

	mm	in	mm	in
PSU	90 x 52.5 x 58.3	3.54 x 2.07 x 2.3	105 x 90 x 58.3	4.13 x 3.54 x 2.3
Packed	95 x 57 x 63	3.75 x 2.25 x 2.5	114 x 95 x 63	4.5 x 3.75 x 2.5

WEIGHT

	kg	lb	kg	lb
PSU	0.19	0.4	0.3	0.7

ENVIRONMENT

Operating temperature	-30-45° C, -22-113° F	-30-45° C, -22-113° F
Maximum surface temperature, steady state, at 25°C ambient	60° C	75° C
Total calculated heat dissipation (full load @115 VAC)	34 btu/hr	92 btu/hr
Relative humidity	20-90% non-condensing	20-90% non-condensing
Ingress protection rating	IP20	IP20
Cooling	Free air convection, Fanless	Free air convection, Fanless

INSTALLATION

Mounting	DIN rail	DIN rail
Orientation	Vertical only	Vertical only
DIN Modules (Standard Unit)	3SU	6SU



VISION.NET DIN RAIL POWER SUPPLIES

60W

150W

APPROBATIONS

Approvals/listings



Conformity

US Safety: UL 61010-1(2-201), UL62368-1
Canada Safety: CSA-C22.2 No. 107.1
EU Safety: EN61558-1, EN62368-1
EU EMC: EN55032, EN61000-3-(2-3), EN61000-4(2-6, 8, 11),
AU/NZ EMC: CISPR32
Other: DIN43880, IEC 60715

PRODUCT NAME

ORDER CODE

Vision.Net DIN Rail PSU, 24VDC, 150W

53906-301

Vision.Net DIN Rail PSU, 24VDC, 60W

53906-302

©2021 Signify Holding. All rights reserved.

All trademarks are owned by Signify Holding or their respective owners. The information provided herein is subject to change, without notice. Signify does not give any representation or warranty as to the accuracy or completeness of the information included herein and shall not be liable for any action in reliance thereon. The information presented in this document is not intended as any commercial offer and does not form part of any quotation or contract, unless otherwise agreed by Signify. Data subject to change.

Ref: 53906-001-100-00