

VISION.NET TOUCHSCREEN VESA MOUNT

OVERVIEW

This document provides installation instructions for the following product(s):

PRODUCT NAME	ORDER CODE
Vision.net touchscreen processor electronics box (for use with external monitor)	95631

INSTALLATION AND SET UP

MOUNTING

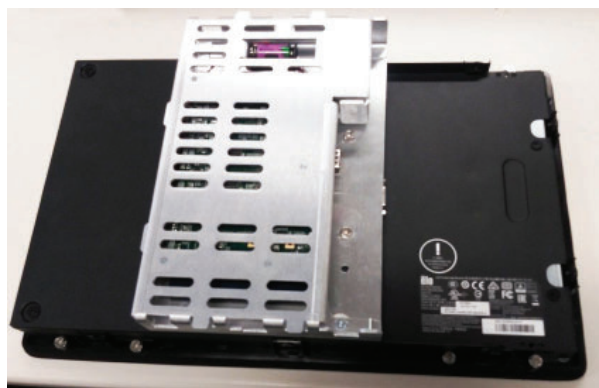
NOTE: The Vision.net Touchscreen VESA mount has extra holes to accommodate variations in monitor size. It is only necessary to use two adjacent screw holes for mounting.

To attach the Vision.net Touchscreen VESA mount:

- Step 1. Determine which two adjacent screw holes are appropriate for your application.
- Step 2. Align the VESA mount and attach using a Phillips screwdriver and screws.
- Step 3. Connect the USB to enable the touchscreen.
- Step 4. Connect the HDMI cable to enable the LCD.



Mounted on standard monitor



Mounted on recommended ELO monitor

VISION.NET TOUCHSCREEN VESA MOUNT

IMPORTANT INFORMATION

WARNINGS AND NOTICES

When using electrical equipment, basic safety precautions should always be followed including the following:

READ AND FOLLOW ALL SAFETY INSTRUCTIONS.

- For indoor, dry locations use only. Do not use outdoors.
- Do not mount near gas or electric heaters.
- Equipment should be mounted in locations and at heights where it will not readily be subjected to tampering by unauthorized personnel.
- The use of accessory equipment not recommended by the manufacturer may cause an unsafe condition.
- Not for residential use. Do not use this equipment for other than intended use.
- Refer service to qualified personnel.



SAVE THESE INSTRUCTIONS.



WARNING: You must have access to a main circuit breaker or other power disconnect device before installing any wiring. Be sure that power is disconnected by removing fuses or turning the main circuit breaker off before installation. Installing the device with power on may expose you to dangerous voltages and damage the device. A qualified electrician must perform this installation.

WARNING: Refer to National Electrical Code® and local codes for cable specifications. Failure to use proper cable can result in damage to equipment or danger to personnel.

WARNING: This equipment is intended for installation in accordance with the National Electric Code® and local regulations. It is also intended for installation in indoor applications only. Before any electrical work is performed, disconnect power at the circuit breaker or remove the fuse to avoid shock or damage to the control. It is recommended that a qualified electrician perform this installation.

CUSTOMER SERVICE

If you have any questions regarding this product, please contact Customer Service at +1-214-647-7880 or via e-mail at entertainment.service@signify.

LIMITED 2-YEAR WARRANTY

Strand offers a two-year limited warranty on its control products against defects in materials or workmanship from the date of delivery. A copy of Strand two-year limited warranty containing specific terms and conditions can be obtained from the Strand web site at www.strandlighting.com or by contacting your local Strand office.

©2019 Signify Holding. All rights reserved.

All trademarks are owned by Signify Holding or their respective owners. The information provided herein is subject to change, without notice. Signify does not give any representation or warranty as to the accuracy or completeness of the information included herein and shall not be liable for any action in reliance thereon. The information presented in this document is not intended as any commercial offer and does not form part of any quotation or contract, unless otherwise agreed by Signify. Data subject to change.