

# PEGASUS

## SUBJECT

Recommended Best Practice

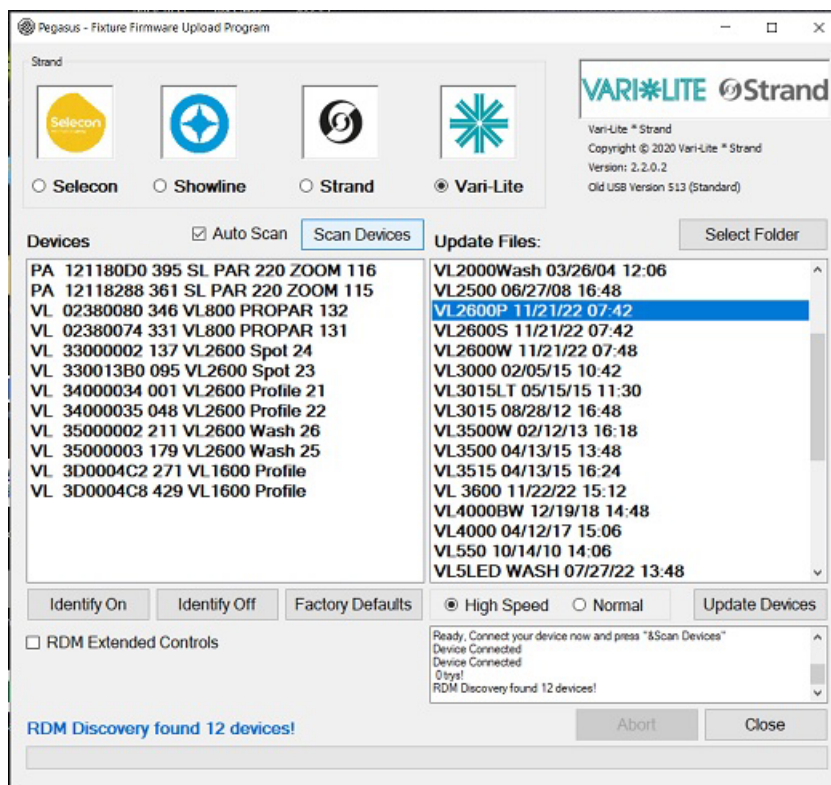
## OVERVIEW

Recommended Best Practice when using PEGASUS

The latest software can be downloaded from the product page or our website [www.VARI-LITE.com](http://www.VARI-LITE.com)

### Important Note:

When using PEGASUS to install updated firmware into any Vari-Lite Luminaire, it is advisable to always first perform a SCAN DEVICES. This will identify any RDM devices present on the DMX line the PEGASUS cable is attached to. After performing the ID, PEGASUS will ask those devices to MUTE, preventing them from potentially interrupting the upload into the desired device.



## CONTACT INFORMATION

For more information on this technical notice or on Vari-Lite products, please contact your Authorized Vari-Lite Dealer or Vari-Lite customer service at 1.214.647.7880.