

Light efficiency:



Light quality:



Color temperature:



Output: 10844 lm
Peak: 430457 cd
Power: 1123.8 W
PF: 1.0



Tracking number: [n/a](#)

Product name:

VL5LED WASH ZOOM=0 (0094) 1#

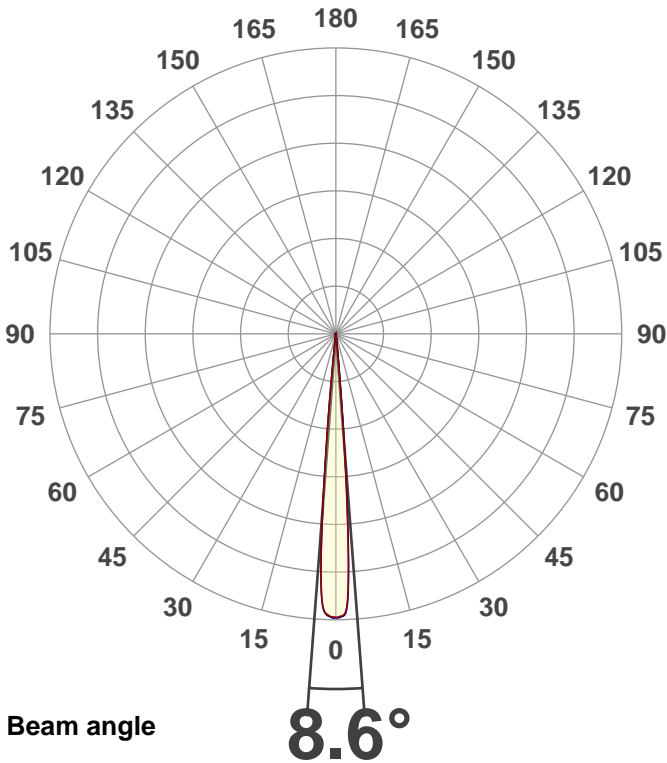
Item number:

VL5LED WASH ZOOM=0 (0094) 1#

Date and time:

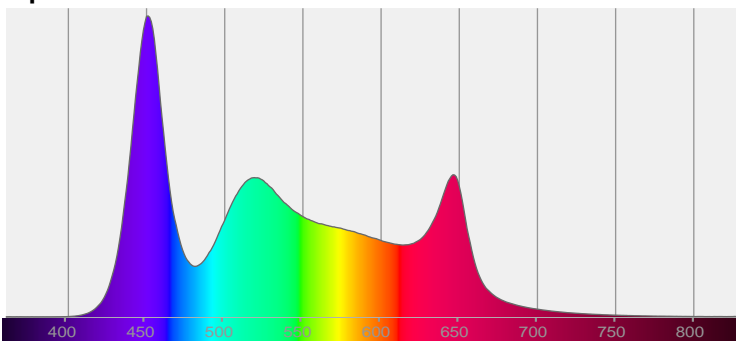
2020/1/19 8:36:55

Description:

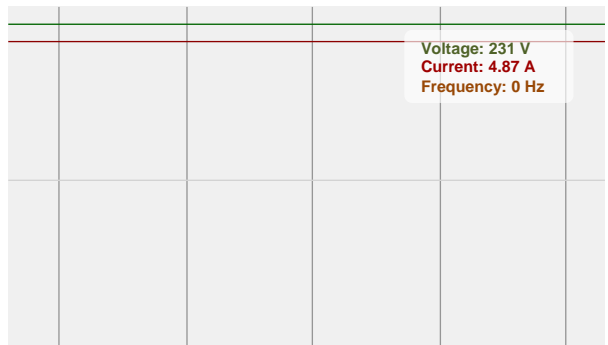


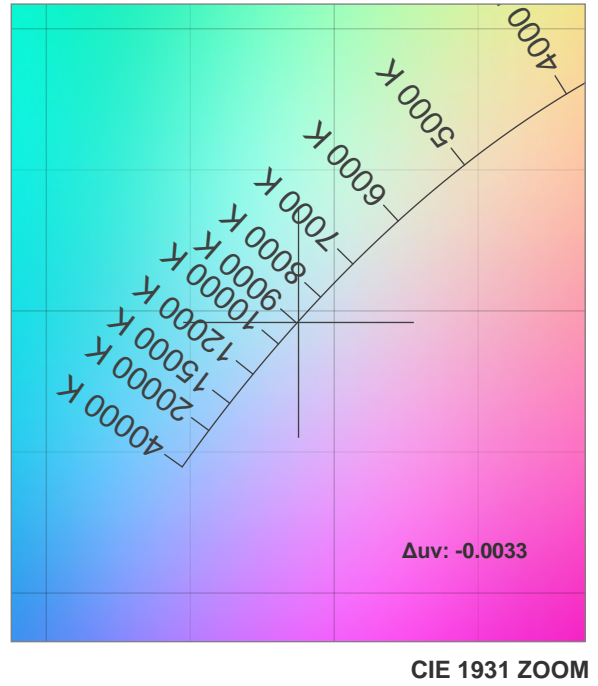
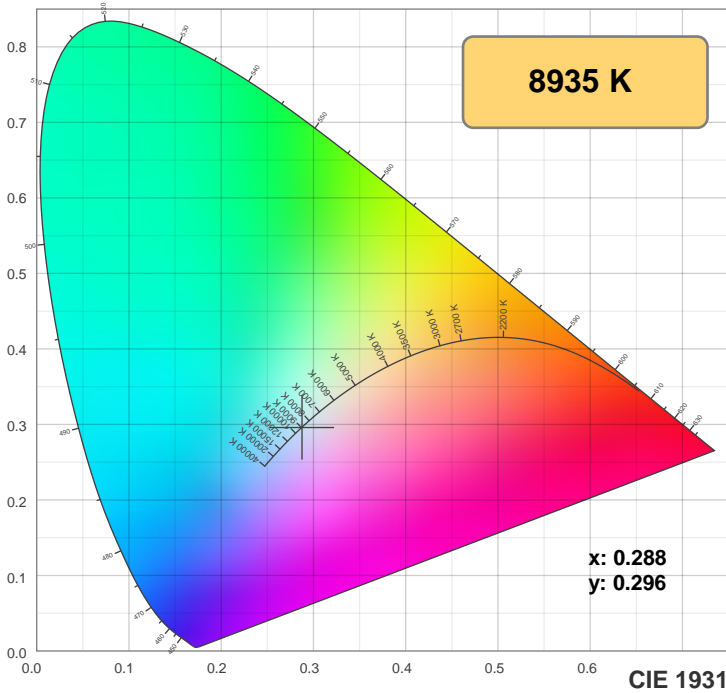
CIE 1931
 x: 0.288
 y: 0.296

Spectra

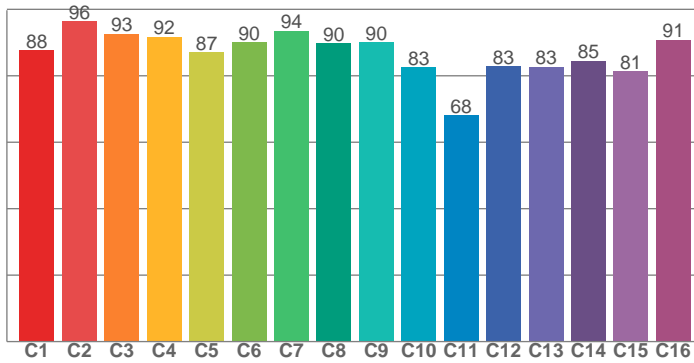


Power

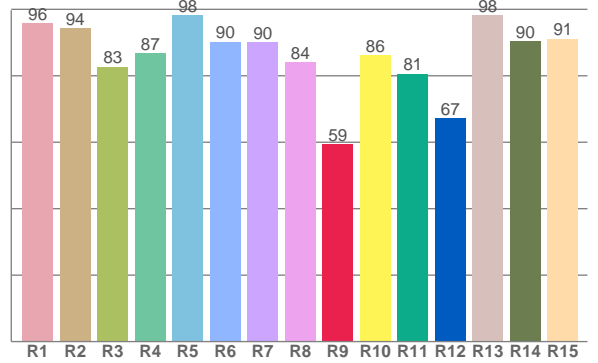




TM30: 87.5



CRI: 90.3 (R1-R8)



CRI R values, only R1-R8 are used to calculate final CRI value

R1	R2	R3	R4	R5	R6	R7	R8	R9	R10	R11	R12	R13	R14	R15
95.7	94.4	82.8	86.8	98.3	90.2	90.1	84.1	59.4	86.2	80.6	67.2	98.2	90.3	91.2

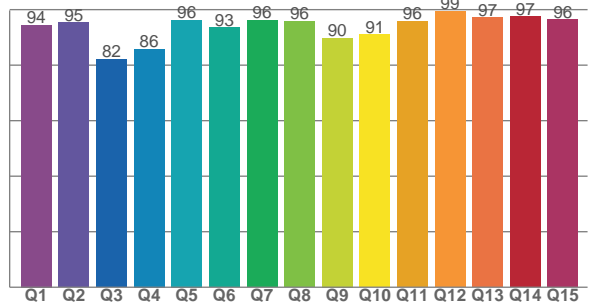
TM30 C values, 16 binned values out of total of 99 C values

C1	C2	C3	C4	C5	C6	C7	C8	C9	C10	C11	C12	C13	C14	C15	C16
87.6	96.4	92.7	91.7	87.0	90.1	93.6	89.8	90.0	82.6	68.1	82.9	82.7	84.6	81.3	90.8

CQS Q values

Q1	Q2	Q3	Q4	Q5	Q6	Q7	Q8	Q9	Q10	Q11	Q12	Q13	Q14	Q15
94.4	95.4	82.1	85.7	96.3	93.5	96.1	95.8	89.8	91.1	95.8	99.4	97.1	97.5	96.4

CQS: 92.3



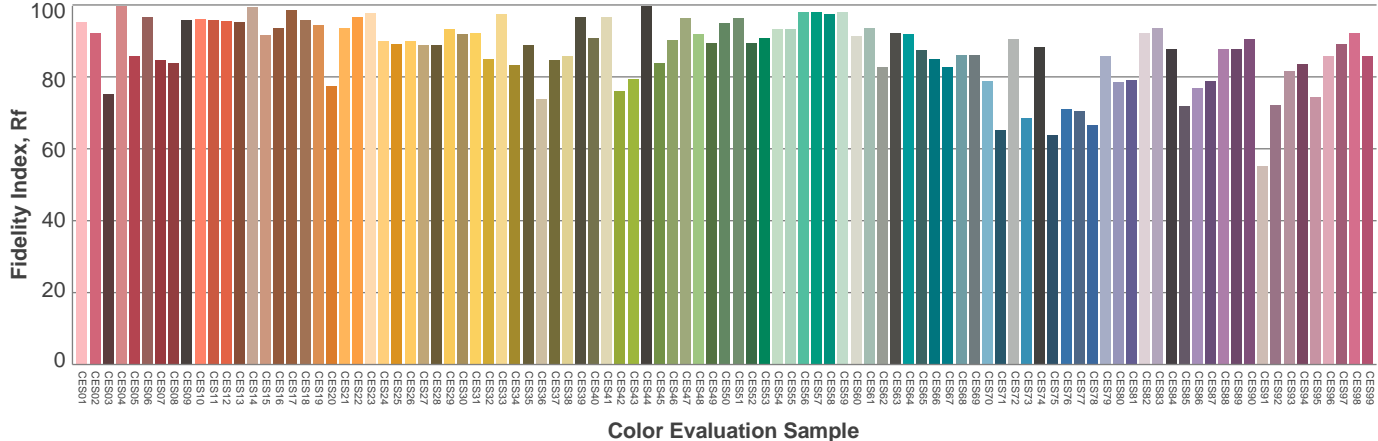
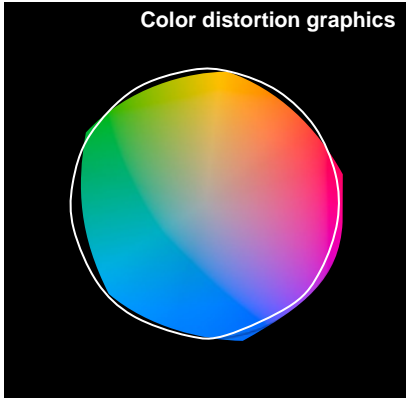
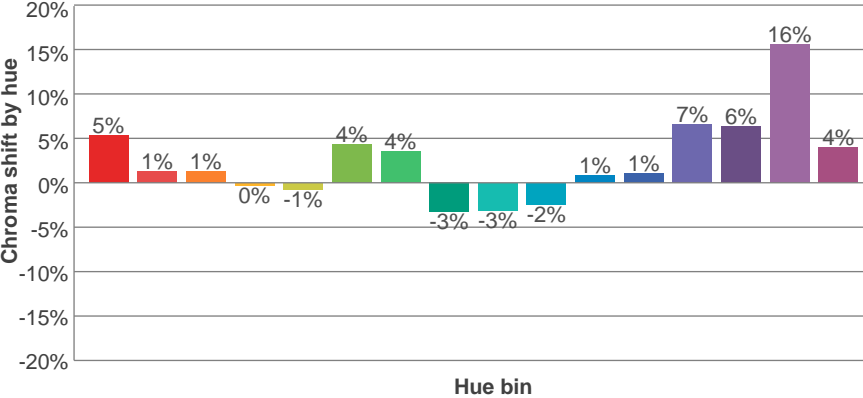
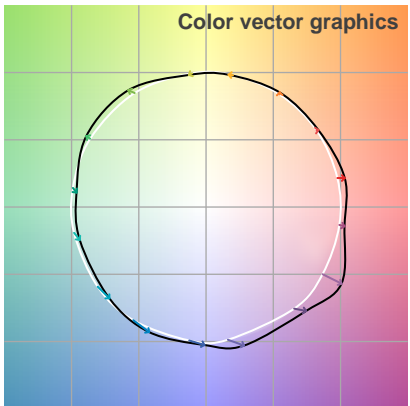
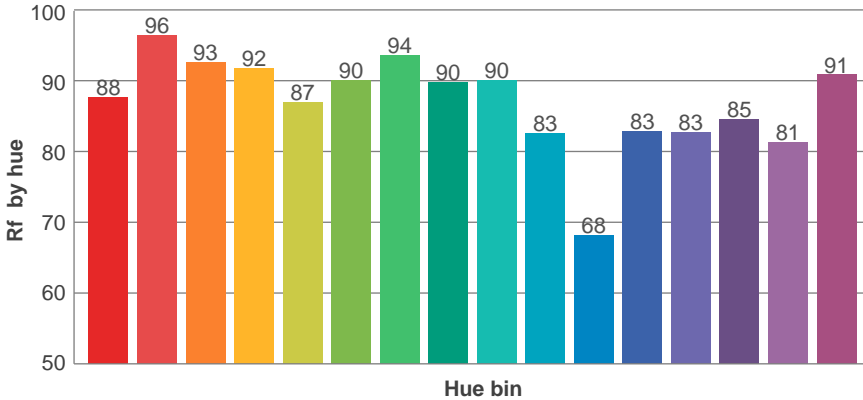
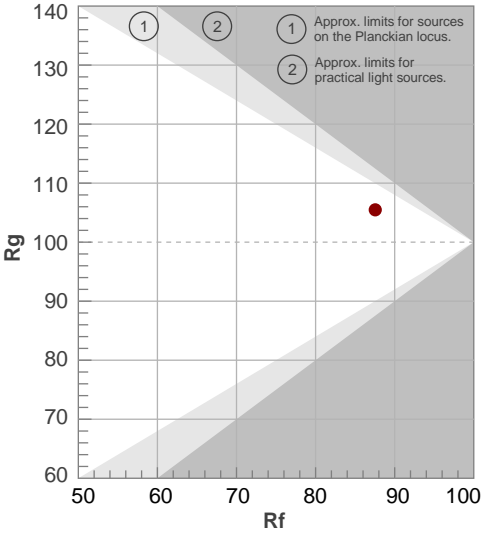
Color parameters

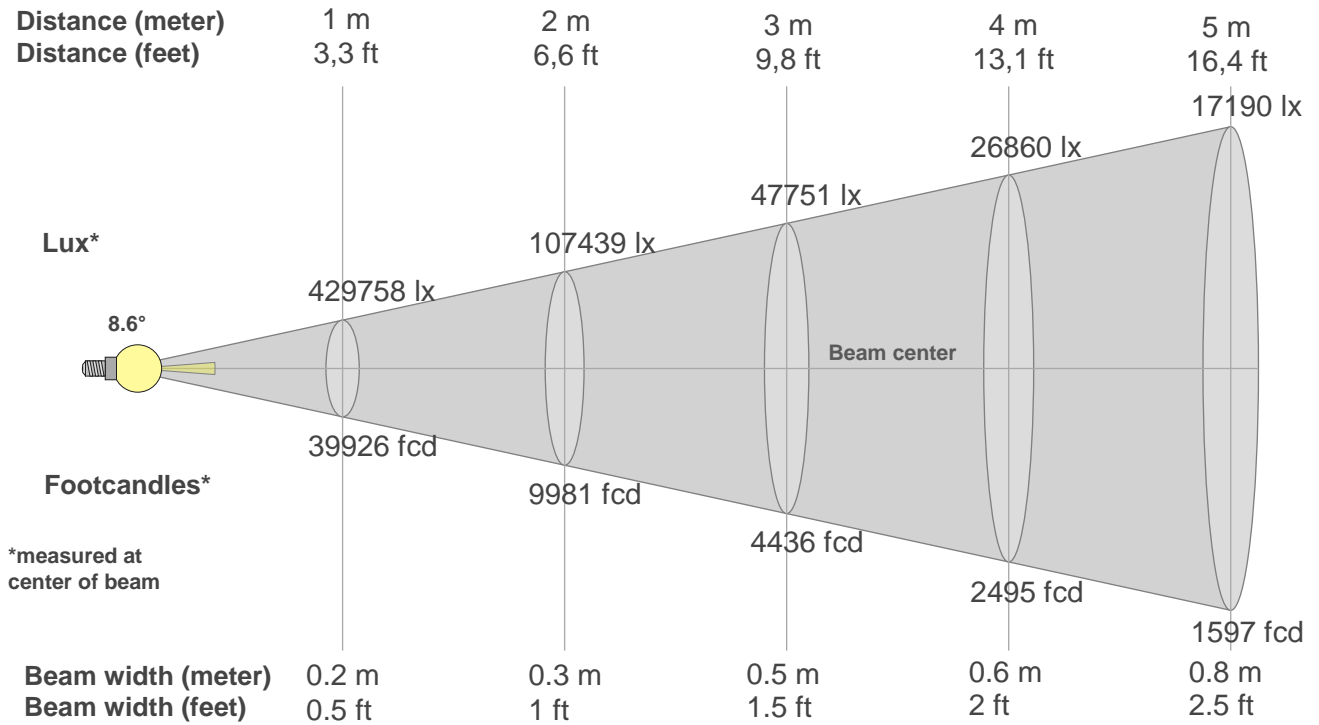
Color temperature	Color rendering index	Red component	Color fidelity	Color gamut	Color quality scale	Color coordinate cie 1931	Color coordinate cie 1931	Color coordinate	Color coordinate	Color deviation from black body
CCT	CRI	CRI R9	TM30 Rf	TM30 Rg	CQS	x	y	u	v	Δuv
8935 K	90.3	59.4	87.5	105.5	92.3	0.288	0.296	0.193	0.297	-0.0033

Rf 87.5
Fidelity index Rf

Rg 105.5
Gammut index Rg

Hue Bin	R _f	Graphic shifts (%)	
		Chroma	Hue
1	88	5%	-1%
2	96	1%	-1%
3	93	1%	1%
4	92	0%	3%
5	87	-1%	3%
6	90	4%	3%
7	94	4%	0%
8	90	-3%	3%
9	90	-3%	6%
10	83	-2%	12%
11	68	1%	15%
12	83	1%	12%
13	83	7%	11%
14	85	6%	6%
15	81	16%	2%
16	91	4%	0%





Beam intensities from 1-20m

1m	2m	3m	4m	5m	6m	7m	8m	9m	10m	11m	12m	13m	14m	15m	16m	17m	18m	19m	20m
3.3ft	6.6ft	9.8ft	13.1ft	16.4ft	19.7ft	23ft	26.2ft	29.5ft	32.8ft	36.1ft	39.4ft	42.7ft	45.9ft	49.2ft	52.5ft	55.8ft	59.1ft	62.3ft	65.6ft
429758lx	107439lx	47751lx	26860lx	17190lx	11938lx	8771lx	6715lx	5306lx	4298lx	3552lx	2984lx	2543lx	2193lx	1910lx	1679lx	1487lx	1326lx	1190lx	1074lx
39925.8fcd	9981.5fcd	4436.2fcd	2495.4fcd	1597fcd	1109.1fcd	814.8fcd	623.8fcd	492.9fcd	399.3fcd	330fcd	277.3fcd	236.2fcd	203.7fcd	177.4fcd	156fcd	138.2fcd	123.2fcd	110.6fcd	99.8fcd

Intensities in 0° c-plane

0°	1°	2°	3°	4°	5°	6°	7°	8°	9°	10°	11°	12°	13°	14°	15°	16°	17°	18°	19°
430K	428K	421K	361K	218K	75K	10K	3K	2K	2K	2K	1K	1K	1K	1K	1K	1K	1K	1K	1K
100%	100%	98%	84%	51%	17%	2%	1%	1%	0%	0%	0%	0%	0%	0%	0%	0%	0%	0%	0%

Intensities in 90° c-plane

0°	1°	2°	3°	4°	5°	6°	7°	8°	9°	10°	11°	12°	13°	14°	15°	16°	17°	18°	19°
430K	429K	423K	365K	224K	78K	10K	3K	2K	2K	2K	1K	1K	1K	1K	1K	1K	1K	1K	1K
100%	100%	98%	85%	52%	18%	2%	1%	1%	0%	0%	0%	0%	0%	0%	0%	0%	0%	0%	0%

Intensities in 180° c-plane

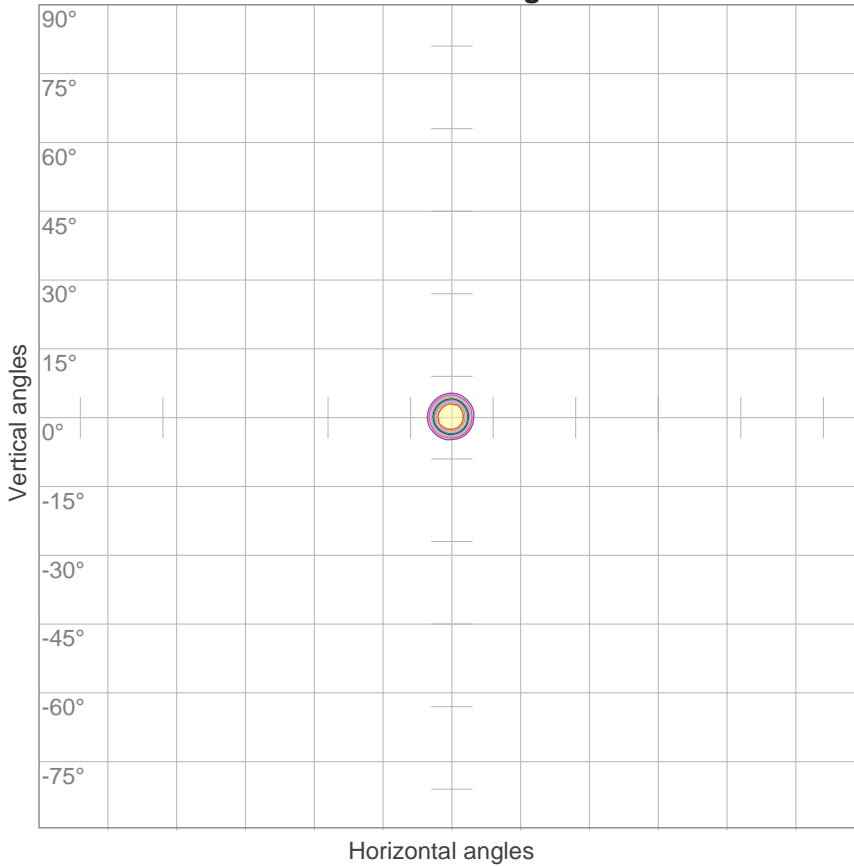
0°	1°	2°	3°	4°	5°	6°	7°	8°	9°	10°	11°	12°	13°	14°	15°	16°	17°	18°	19°
430K	428K	424K	402K	309K	154K	39K	5K	3K	2K	2K	1K	1K	1K	1K	1K	1K	1K	1K	1K
100%	100%	99%	94%	72%	36%	9%	1%	1%	0%	0%	0%	0%	0%	0%	0%	0%	0%	0%	0%

Intensities in 270° c-plane

0°	1°	2°	3°	4°	5°	6°	7°	8°	9°	10°	11°	12°	13°	14°	15°	16°	17°	18°	19°
430K	429K	425K	403K	306K	150K	37K	5K	3K	2K	2K	1K	1K	1K	1K	1K	1K	1K	1K	1K
100%	100%	99%	94%	71%	35%	9%	1%	1%	0%	0%	0%	0%	0%	0%	0%	0%	0%	0%	0%

Beam angle 50%	Field angle 10%	Cutoff angle 2,5%	Intensity ratio in 120° cone	Intensity ratio in 90° cone
8.6°	11.3°	12.6°	90.4%	87.0%

ISO candela diagram



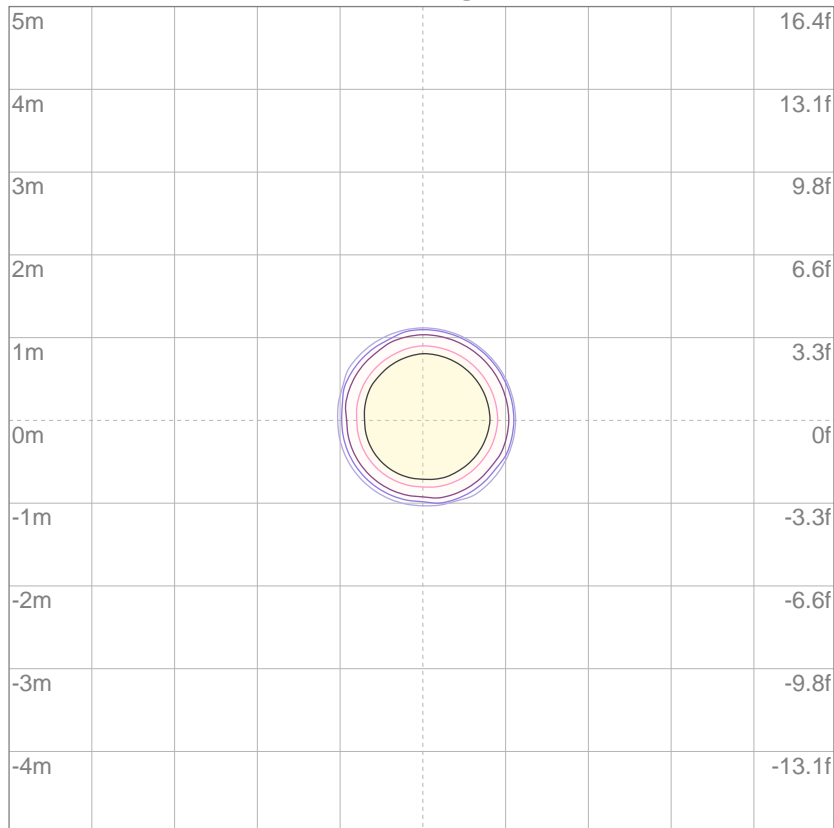
10%	42976 cd
20%	85952 cd
30%	128927 cd
40%	171903 cd
50%	214879 cd
60%	257855 cd
70%	300831 cd
80%	343806 cd
90%	386782 cd

Conditions:

Number of c-planes: 4

Candela at center: 429758 cd

ISO lux diagram



3%	129 lx
5%	215 lx
10%	430 lx
30%	1289 lx
50%	2149 lx

Conditions:

Number of c-planes: 4

Lux at center: 4298 lx

Lux distribution on a surface when lamp is mounted at 10 meters from the surface.

Glare Evaluation According to UGR

p Ceiling	70	70	50	50	30	70	70	50	50	30
p Walls	50	30	50	30	30	50	30	50	30	30
p Floor	20	20	20	20	20	20	20	20	20	20
Room size X Y	Viewing direction at right angles to lamp axis					Viewing direction parallel to lamp axis				
n/a	n/a	n/a	n/a	n/a	n/a	n/a	n/a	n/a	n/a	n/a
n/a	n/a	n/a	n/a	n/a	n/a	n/a	n/a	n/a	n/a	n/a
n/a	n/a	n/a	n/a	n/a	n/a	n/a	n/a	n/a	n/a	n/a
n/a	n/a	n/a	n/a	n/a	n/a	n/a	n/a	n/a	n/a	n/a
n/a	n/a	n/a	n/a	n/a	n/a	n/a	n/a	n/a	n/a	n/a
n/a	n/a	n/a	n/a	n/a	n/a	n/a	n/a	n/a	n/a	n/a
n/a	n/a	n/a	n/a	n/a	n/a	n/a	n/a	n/a	n/a	n/a
n/a	n/a	n/a	n/a	n/a	n/a	n/a	n/a	n/a	n/a	n/a
n/a	n/a	n/a	n/a	n/a	n/a	n/a	n/a	n/a	n/a	n/a
n/a	n/a	n/a	n/a	n/a	n/a	n/a	n/a	n/a	n/a	n/a
n/a	n/a	n/a	n/a	n/a	n/a	n/a	n/a	n/a	n/a	n/a
n/a	n/a	n/a	n/a	n/a	n/a	n/a	n/a	n/a	n/a	n/a
n/a	n/a	n/a	n/a	n/a	n/a	n/a	n/a	n/a	n/a	n/a
Variation of the observer position for the luminaire distance S										
n/a	n/a					n/a				
n/a	n/a					n/a				
n/a	n/a					n/a				
Standard table	n/a					n/a				
Correction summand	n/a					n/a				
Corrected glare indices referring to 10844 lm total luminous flux										

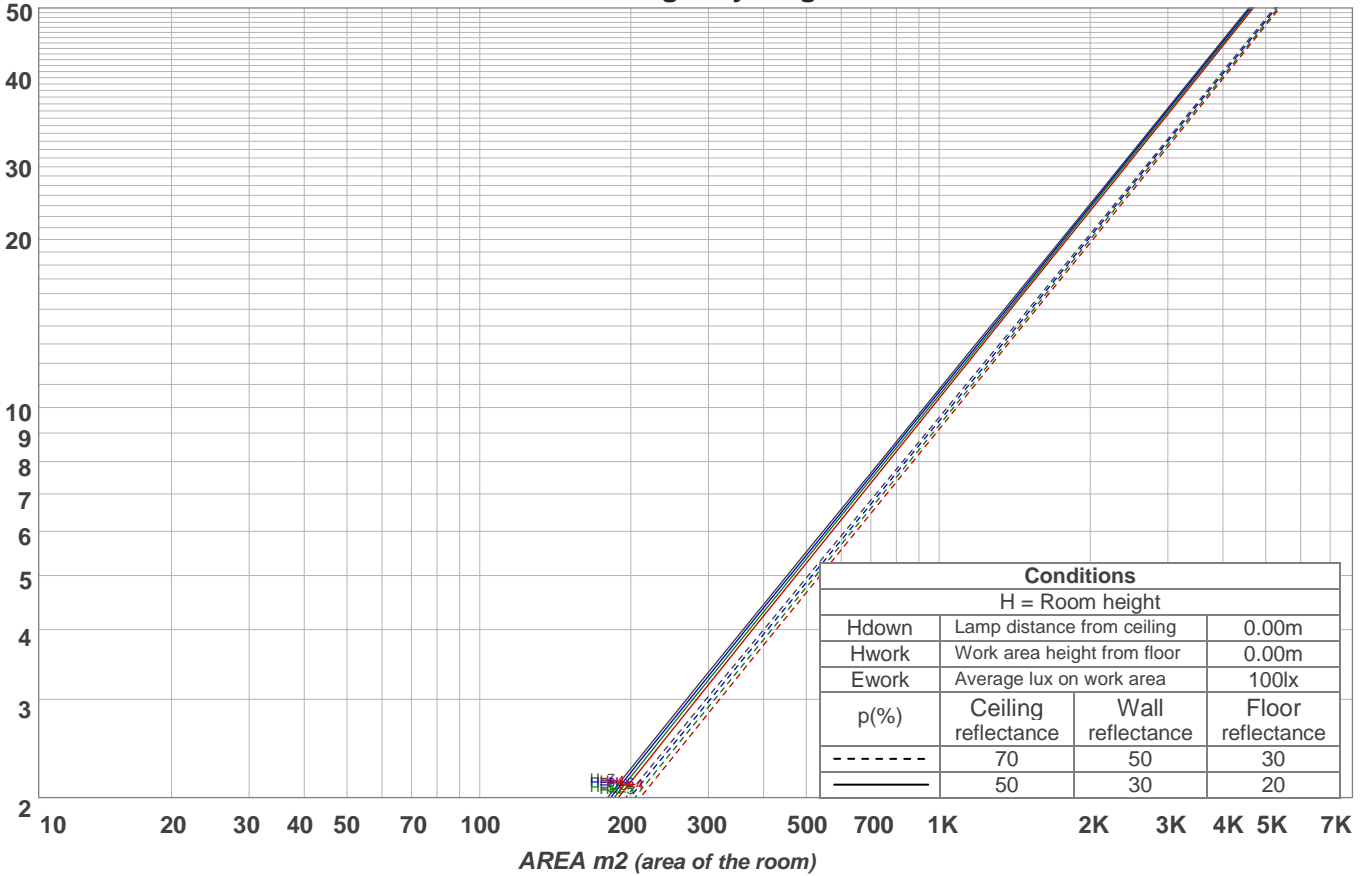
UGR error. Make sure you have installed the LDT editor from Dialux.

Coefficients of Utilization

Ceiling reflectance	80				70				50			30			10			0	
Wall reflectance	70	50	30	10	70	50	30	10	50	30	10	50	30	10	50	30	10	0	
Floor reflectance	20	20	20	20	20	20	20	20	20	20	20	20	20	20	20	20	20	20	0
RCR	(RCR: Room Cavity Ratio)																		
	Room Values are expressed as percentage of Lumens delivered to the task surface																		
0	118	118	118	118	114	114	114	114	108	108	108	102	102	102	96	96	96	94	
1	113	111	109	107	110	108	107	105	103	102	101	99	98	97	94	94	93	91	
2	110	106	103	101	107	104	101	99	100	98	96	96	94	93	93	91	90	89	
3	107	102	99	96	104	100	97	95	97	95	93	94	92	90	91	90	88	87	
4	104	99	95	92	102	98	94	92	95	92	90	92	90	88	90	88	87	85	
5	102	96	93	90	100	95	92	89	93	90	88	91	88	87	89	87	85	84	
6	100	94	91	88	98	93	90	87	91	88	86	90	87	85	88	86	84	83	
7	98	92	89	86	97	92	88	86	90	87	85	88	86	84	87	85	84	83	
8	96	91	87	85	95	90	87	85	89	86	84	88	85	83	86	84	83	82	
9	95	90	86	84	94	89	86	84	88	85	83	87	84	83	86	84	82	81	
10	94	88	85	83	93	88	85	83	87	84	82	86	84	82	85	83	82	81	

LAMPS (number of lamps)

Luminaire budgetary diagram



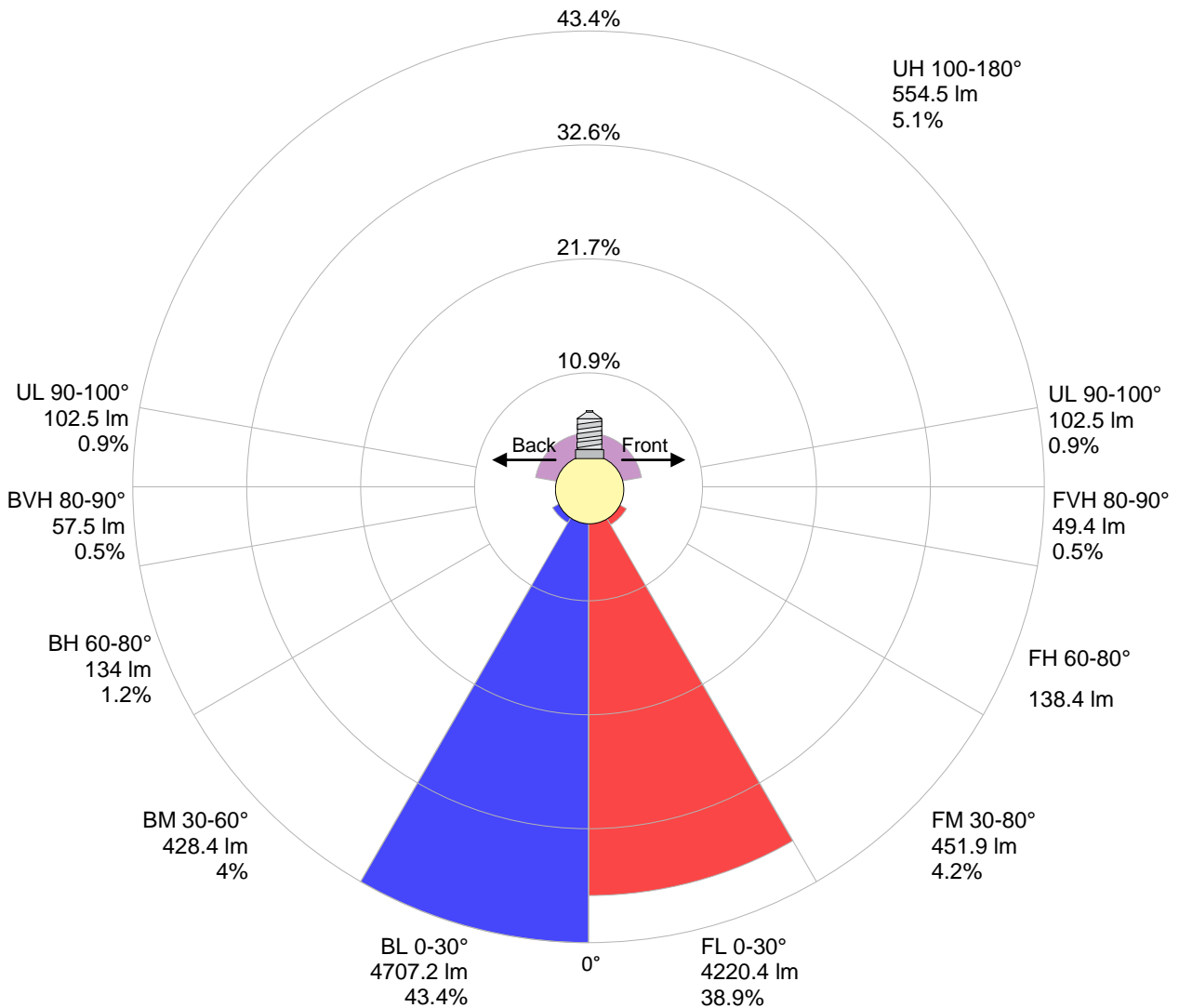
Zonal Lumen Summary

0°-10°	10°-20°	20°-30°	30°-40°	40°-50°	50°-60°	60°-70°	70°-80°	80°-90°
8236 lm	323 lm	363 lm	348 lm	304 lm	231 lm	161 lm	111 lm	108 lm
90°-100°	100°-110°	110°-120°	120°-130°	130°-140°	140°-150°	150°-160°	160°-170°	170°-180°
103 lm	89.2 lm	89.2 lm	86.2 lm	89.8 lm	83.8 lm	65.0 lm	42.0 lm	11.2 lm

LCS table

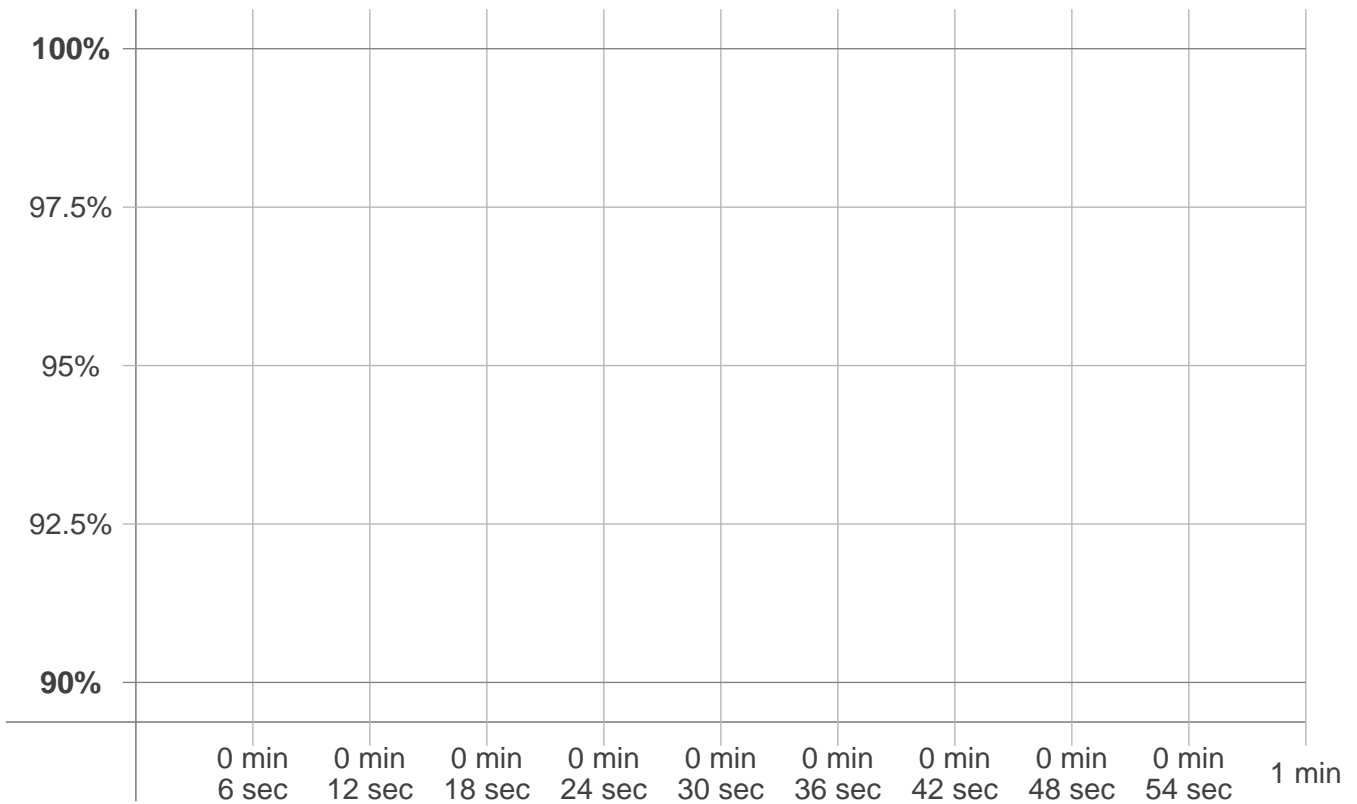
BUG rating:	B4 U4 G1	
Forward light	Lumens	Lumens %
Low(0-30):	4220.4	38.9%
Medium(30-60):	451.9	4.2%
High(60-80):	138.4	1.3%
Very high(80-90):	49.4	0.5%
Back light		
Low(0-30):	4707.2	43.4%
Medium(30-60):	428.4	4%
High(60-80):	134	1.2%
Very high(80-90):	57.5	0.5%
Uplight		
Low(90-100):	102.5	0.9%
High(100-180):	554.5	5.1%

LCS graph



Stabilization

Warmup curve



Warmup result

Warmup time:	n/a
Warmup variation	n/a%

Warmup conditions

Stable period:	n/a
Stable change max:	n/a%
Minimum time:	n/a

Color temperature change

CCT start	CCT change	CCT end
n/a K	n/a K	8935 K

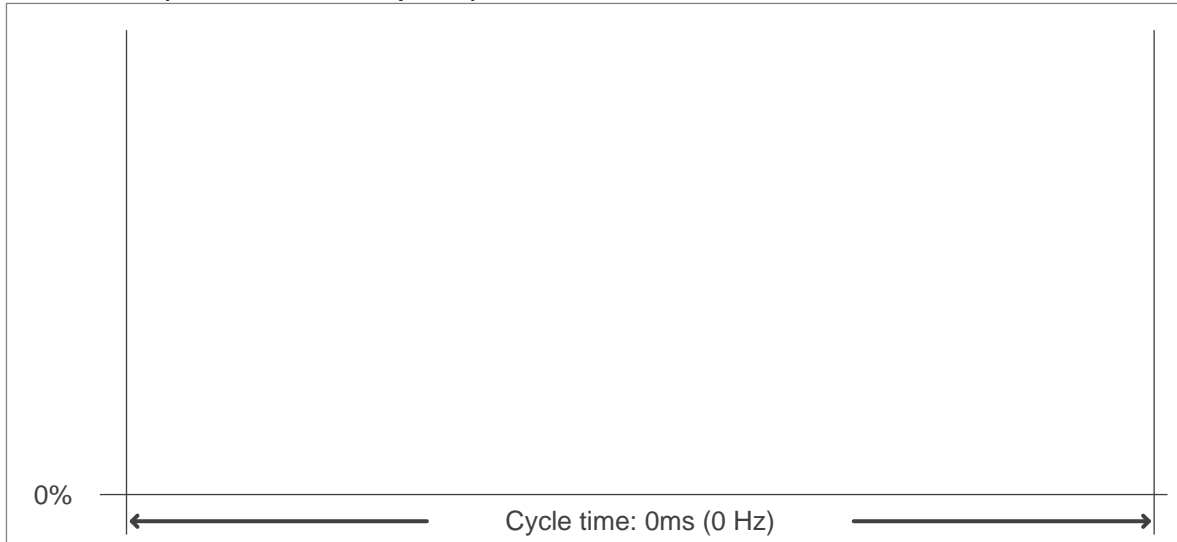
Output change

Output start	Output change	Output end
n/a lm	n/a lm	10844 lm

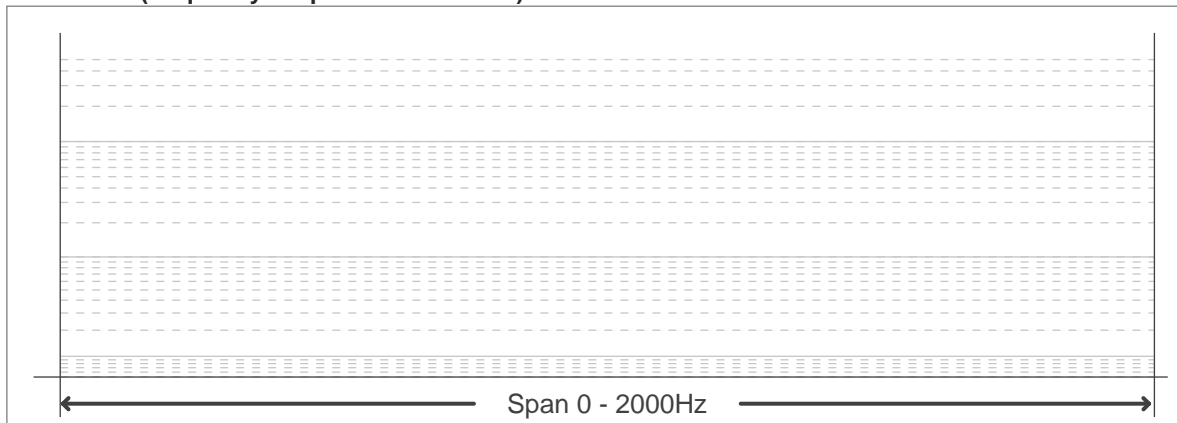
Flicker curve (complete sampled flicker signal)



Flicker frame (frame of one flicker period)



Flicker FFT (frequency scope of flicker curve)



Flicker results:

Flicker frequency:	n/a Hz
Flicker index:	n/a
Flicker percentage:	n/a %
SVM: (Visual flicker)	n/a

Flicker conditions:

Sample rate:	0 samples/second
---------------------	-------------------------