

Light efficiency:

∞ Lumen/Watt

Light quality:

CRI: 73.4

Color temperature:

7103 K

Output: 18341 lm

Peak: 237352 cd

Power: - W

PF: n/a



Tracking number: [n/a](#)

Product name:

VL550B ZOOM 128 FOCUS 112

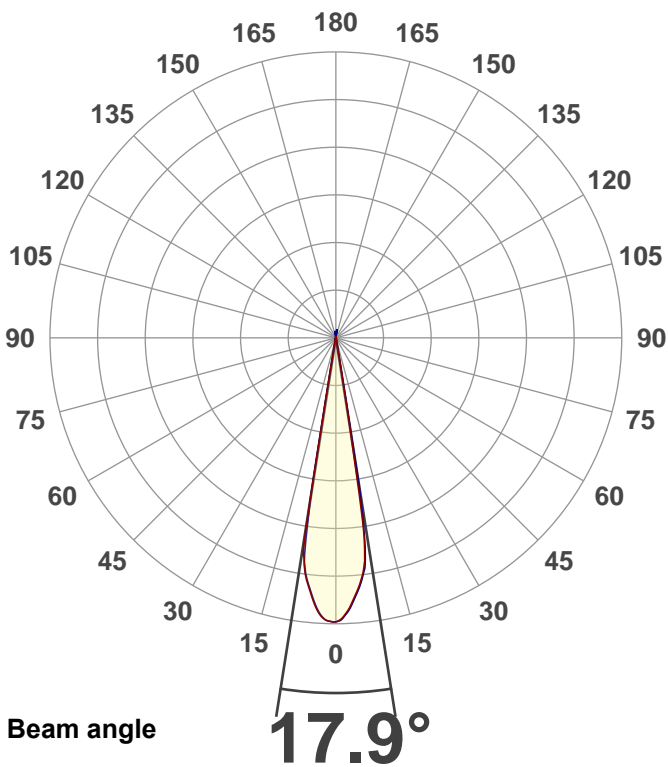
Item number:

Date and time:

2019/10/25 17:05:52

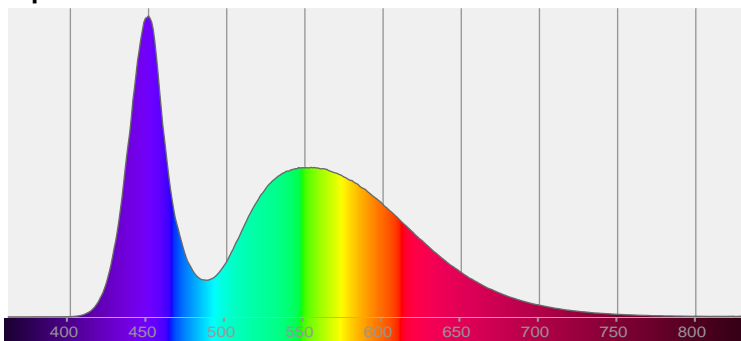
Description:

VL550B ZOOM 128 FOCUS 112

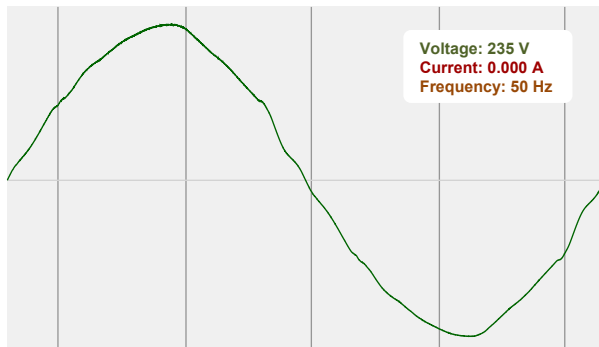


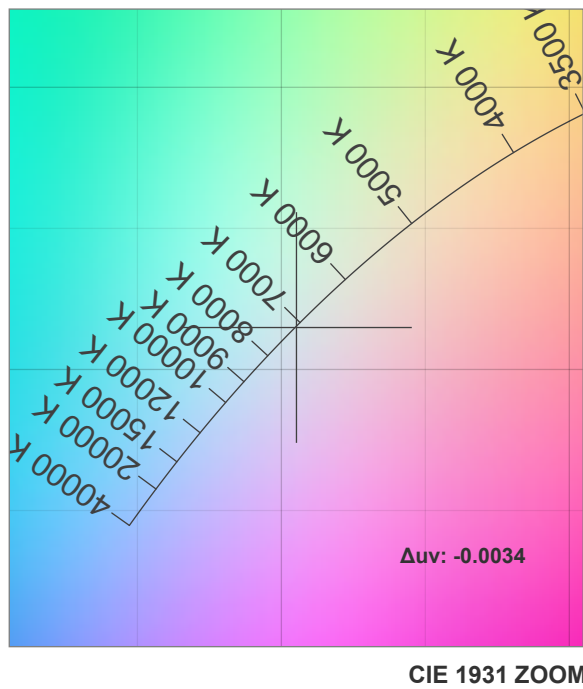
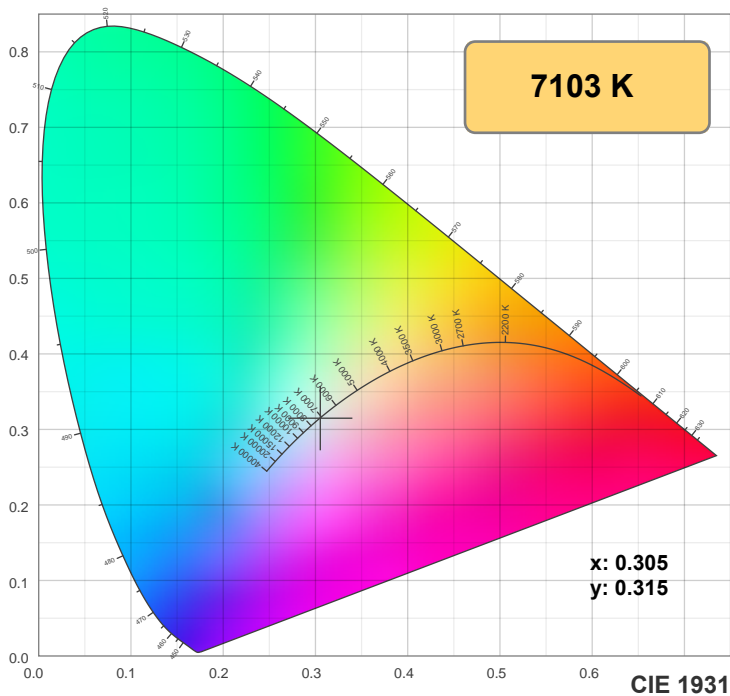
CIE 1931
x: 0.305
y: 0.315

Spectra



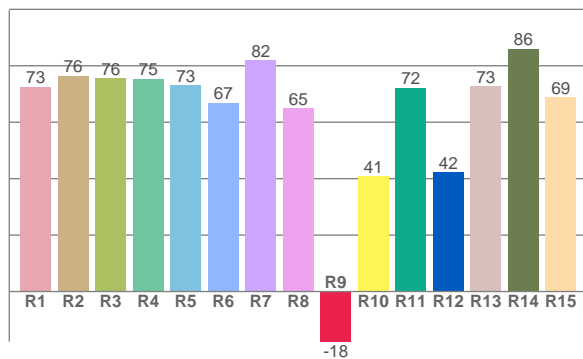
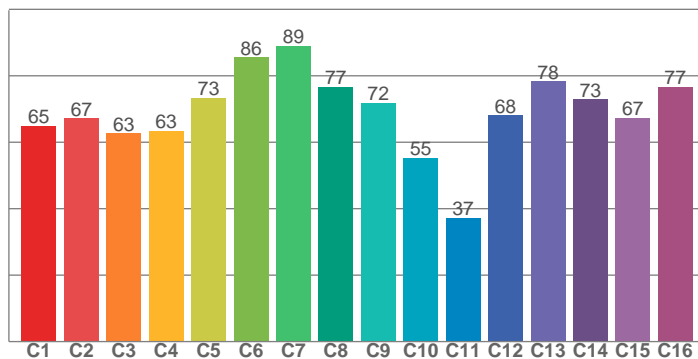
Power





TM30: 69.4

CRI: 73.4 (R1-R8)



CRI R values, only R1-R8 are used to calculate final CRI value

R1	R2	R3	R4	R5	R6	R7	R8	R9	R10	R11	R12	R13	R14	R15
72.6	76.5	75.6	75.4	73.1	66.9	81.9	65.0	-17.7	40.8	72.2	42.2	72.8	86.1	68.9

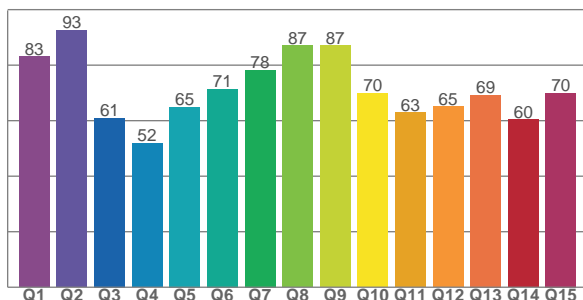
TM30 C values, 16 binned values out of total of 99 C values

C1	C2	C3	C4	C5	C6	C7	C8	C9	C10	C11	C12	C13	C14	C15	C16
65.0	67.2	62.7	63.4	73.4	85.6	89.0	76.7	71.8	55.3	37.3	68.1	78.3	72.9	67.3	76.6

CQS Q values

Q1	Q2	Q3	Q4	Q5	Q6	Q7	Q8	Q9	Q10	Q11	Q12	Q13	Q14	Q15
83.1	92.5	61.0	51.8	64.9	71.4	78.2	87.0	87.0	69.9	62.9	65.1	69.2	60.3	69.9

CQS: 69.5



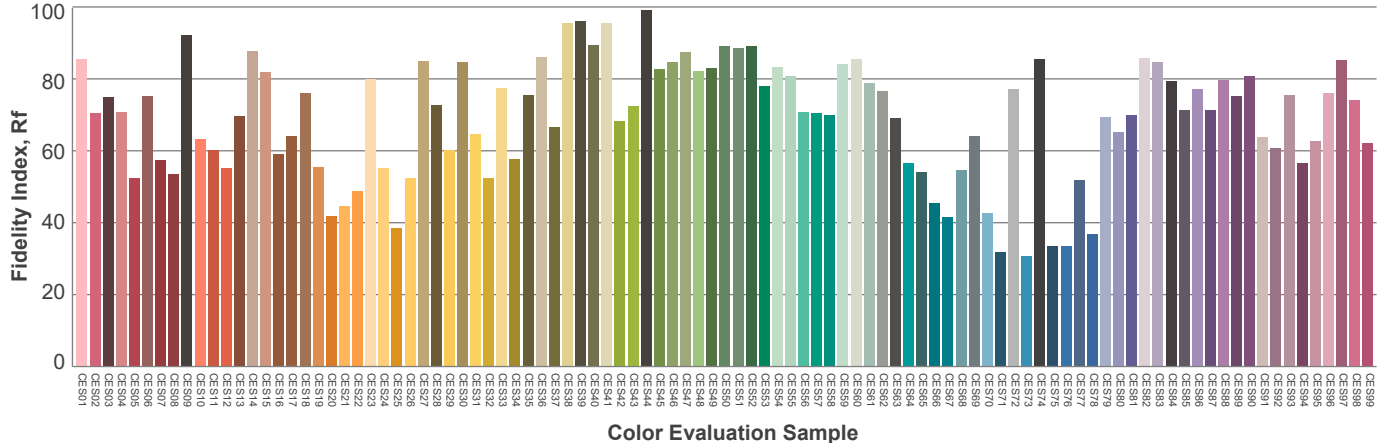
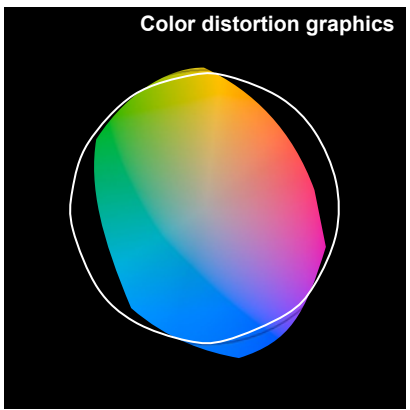
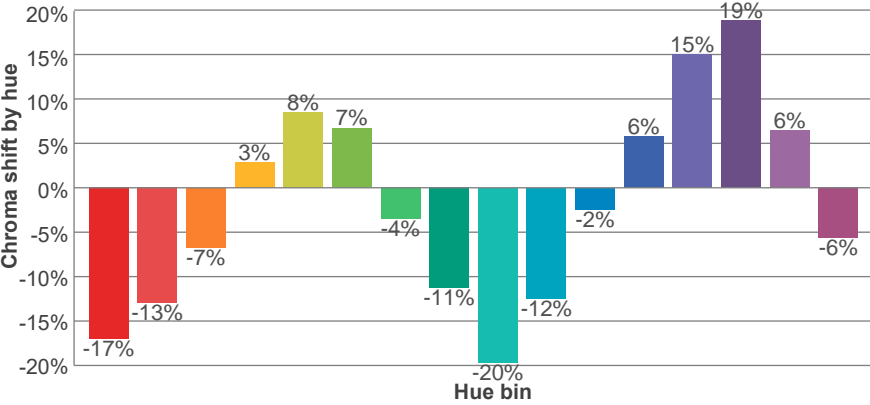
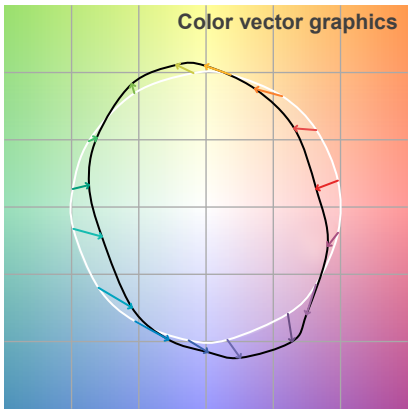
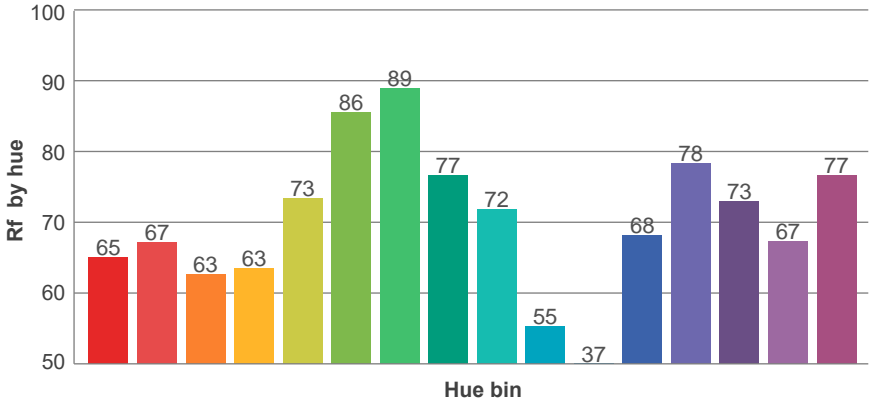
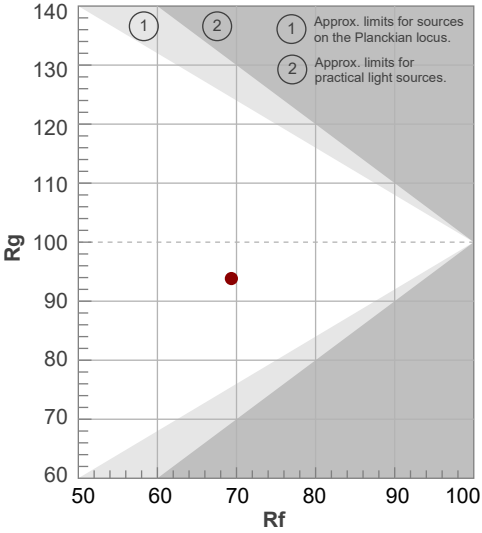
Color parameters

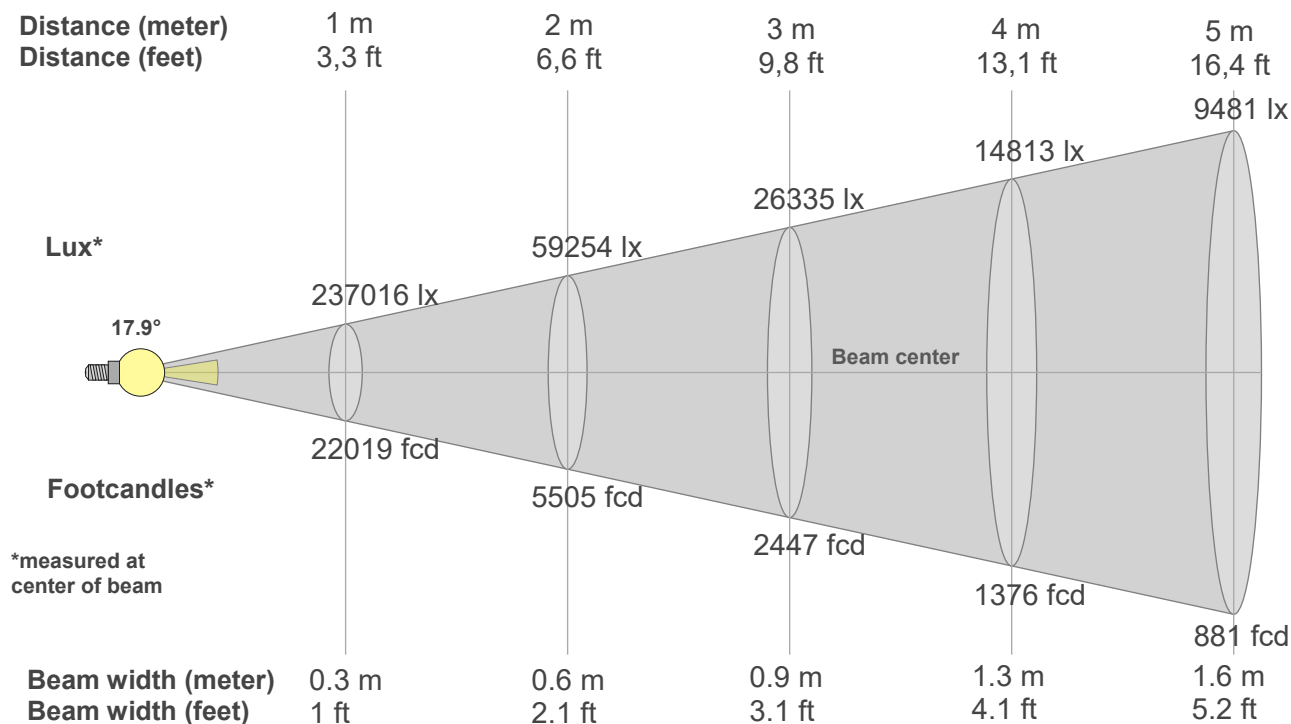
Color temperature	Color rendering index	Red component	Color fidelity	Color gamut	Color quality scale	Color coordinate cie 1931	Color coordinate cie 1931	Color coordinate	Color coordinate	Color deviation from black body
CCT	CRI	CRI R9	TM30 Rf	TM30 Rg	CQS	x	y	u	v	Δuv
7103 K	73.4	-17.7	69.4	93.8	69.5	0.305	0.315	0.198	0.306	-0.0034

Rf 69.4
Fidelity index Rf

Rg 93.8
Gammut index Rg

Hue Bin	R _f	Graphic shifts (%)	
		Chroma	Hue
1	65	-17%	-3%
2	67	-13%	10%
3	63	-7%	20%
4	63	3%	20%
5	73	8%	11%
6	86	7%	-2%
7	89	-4%	-5%
8	77	-11%	-5%
9	72	-20%	10%
10	55	-12%	26%
11	37	-2%	28%
12	68	6%	16%
13	78	15%	7%
14	73	19%	-9%
15	67	6%	-22%
16	77	-6%	-11%





Beam intensities from 1-20m

1m	2m	3m	4m	5m	6m	7m	8m	9m	10m	11m	12m	13m	14m	15m	16m	17m	18m	19m	20m
3.3ft	6.6ft	9.8ft	13.1ft	16.4ft	19.7ft	23ft	26.2ft	29.5ft	32.8ft	36.1ft	39.4ft	42.7ft	45.9ft	49.2ft	52.5ft	55.8ft	59.1ft	62.3ft	65.6ft
237016lx	59254lx	26335lx	14813lx	9481lx	6584lx	4837lx	3703lx	2926lx	2370lx	1959lx	1646lx	1402lx	1209lx	1053lx	926lx	820lx	732lx	657lx	593lx
22019.5 fcd	5504.9 fcd	2446.6 fcd	1376.2 fcd	880.8 fcd	611.7 fcd	449.4 fcd	344.1 fcd	271.8 fcd	220.2 fcd	182 fcd	152.9 fcd	130.3 fcd	112.3 fcd	97.9 fcd	86 fcd	76.2 fcd	68 fcd	61 fcd	55 fcd

Intensities in 0° c-plane

0°	1°	2°	3°	4°	5°	6°	7°	8°	9°	10°	11°	12°	13°	14°	15°	16°	17°	18°	19°
237K	235K	231K	225K	218K	211K	203K	192K	165K	71K	3K	2K	1K	1K	1K	1K	1K	1K	1K	1K
100%	99%	97%	95%	92%	89%	86%	81%	70%	30%	1%	1%	1%	0%	0%	0%	0%	0%	0%	0%

Intensities in 90° c-plane

0°	1°	2°	3°	4°	5°	6°	7°	8°	9°	10°	11°	12°	13°	14°	15°	16°	17°	18°	19°
237K	236K	231K	226K	219K	212K	204K	195K	173K	112K	4K	2K	1K	1K	1K	1K	1K	1K	1K	1K
100%	99%	98%	95%	92%	89%	86%	82%	73%	47%	2%	1%	1%	0%	0%	0%	0%	0%	0%	0%

Intensities in 180° c-plane

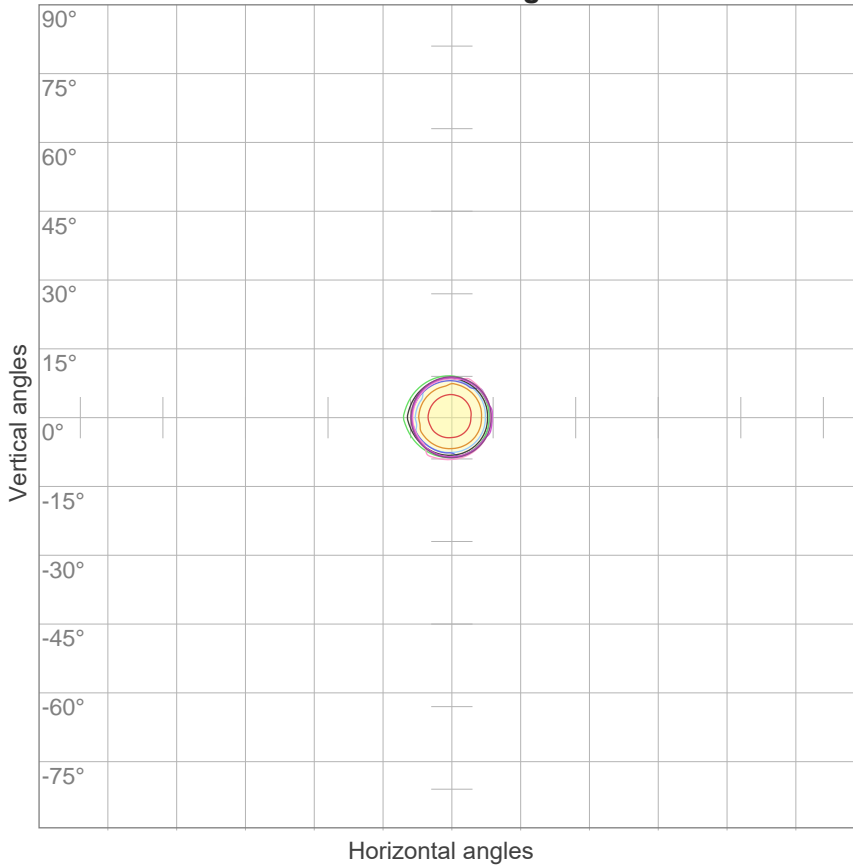
0°	1°	2°	3°	4°	5°	6°	7°	8°	9°	10°	11°	12°	13°	14°	15°	16°	17°	18°	19°
237K	237K	236K	233K	227K	220K	211K	202K	189K	146K	18K	2K	1K	1K	1K	0K	0K	0K	0K	0K
100%	100%	100%	98%	96%	93%	89%	85%	80%	62%	8%	1%	0%	0%	0%	0%	0%	0%	0%	0%

Intensities in 270° c-plane

0°	1°	2°	3°	4°	5°	6°	7°	8°	9°	10°	11°	12°	13°	14°	15°	16°	17°	18°	19°
237K	237K	236K	232K	226K	218K	210K	201K	185K	125K	3K	2K	1K	1K	1K	0K	0K	0K	0K	0K
100%	100%	100%	98%	95%	92%	89%	85%	78%	53%	1%	1%	0%	0%	0%	0%	0%	0%	0%	0%

Beam angle 50%	Field angle 10%	Cutoff angle 2,5%	Intensity ratio in 120° cone	Intensity ratio in 90° cone
17.9°	19.4°	19.9°	92.8%	91.7%

ISO candela diagram



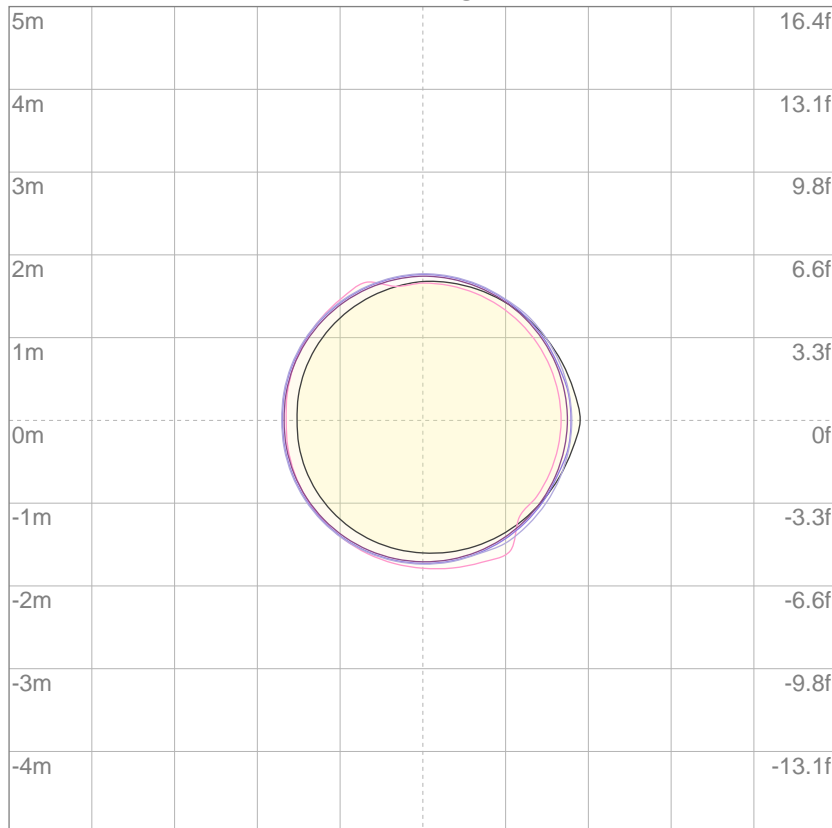
10%	23702 cd
20%	47403 cd
30%	71105 cd
40%	94806 cd
50%	118508 cd
60%	142210 cd
70%	165911 cd
80%	189613 cd
90%	213314 cd

Conditions:

Number of c-planes: 4

Candela at center: 237016 cd

ISO lux diagram



3%	71.1 lx
5%	119 lx
10%	237 lx
30%	711 lx
50%	1185 lx

Conditions:

Number of c-planes: 4

Lux at center: 2370 lx

Lux distribution on a surface when lamp is mounted at 10 meters from the surface.

Glare Evaluation According to UGR

p Ceiling	70	70	50	50	30	70	70	50	50	30
p Walls	50	30	50	30	30	50	30	50	30	30
p Floor	20	20	20	20	20	20	20	20	20	20
Room size X Y	Viewing direction at right angles to lamp axis					Viewing direction parallel to lamp axis				
n/a	n/a	n/a	n/a	n/a	n/a	n/a	n/a	n/a	n/a	n/a
n/a	n/a	n/a	n/a	n/a	n/a	n/a	n/a	n/a	n/a	n/a
n/a	n/a	n/a	n/a	n/a	n/a	n/a	n/a	n/a	n/a	n/a
n/a	n/a	n/a	n/a	n/a	n/a	n/a	n/a	n/a	n/a	n/a
n/a	n/a	n/a	n/a	n/a	n/a	n/a	n/a	n/a	n/a	n/a
n/a	n/a	n/a	n/a	n/a	n/a	n/a	n/a	n/a	n/a	n/a
n/a	n/a	n/a	n/a	n/a	n/a	n/a	n/a	n/a	n/a	n/a
n/a	n/a	n/a	n/a	n/a	n/a	n/a	n/a	n/a	n/a	n/a
n/a	n/a	n/a	n/a	n/a	n/a	n/a	n/a	n/a	n/a	n/a
n/a	n/a	n/a	n/a	n/a	n/a	n/a	n/a	n/a	n/a	n/a
n/a	n/a	n/a	n/a	n/a	n/a	n/a	n/a	n/a	n/a	n/a
n/a	n/a	n/a	n/a	n/a	n/a	n/a	n/a	n/a	n/a	n/a
Variation of the observer position for the luminaire distance S										
n/a	n/a					n/a				
n/a	n/a					n/a				
n/a	n/a					n/a				
Standard table	n/a					n/a				
Correction summand	n/a					n/a				
Corrected glare indices referring to 18341 lm total luminous flux										

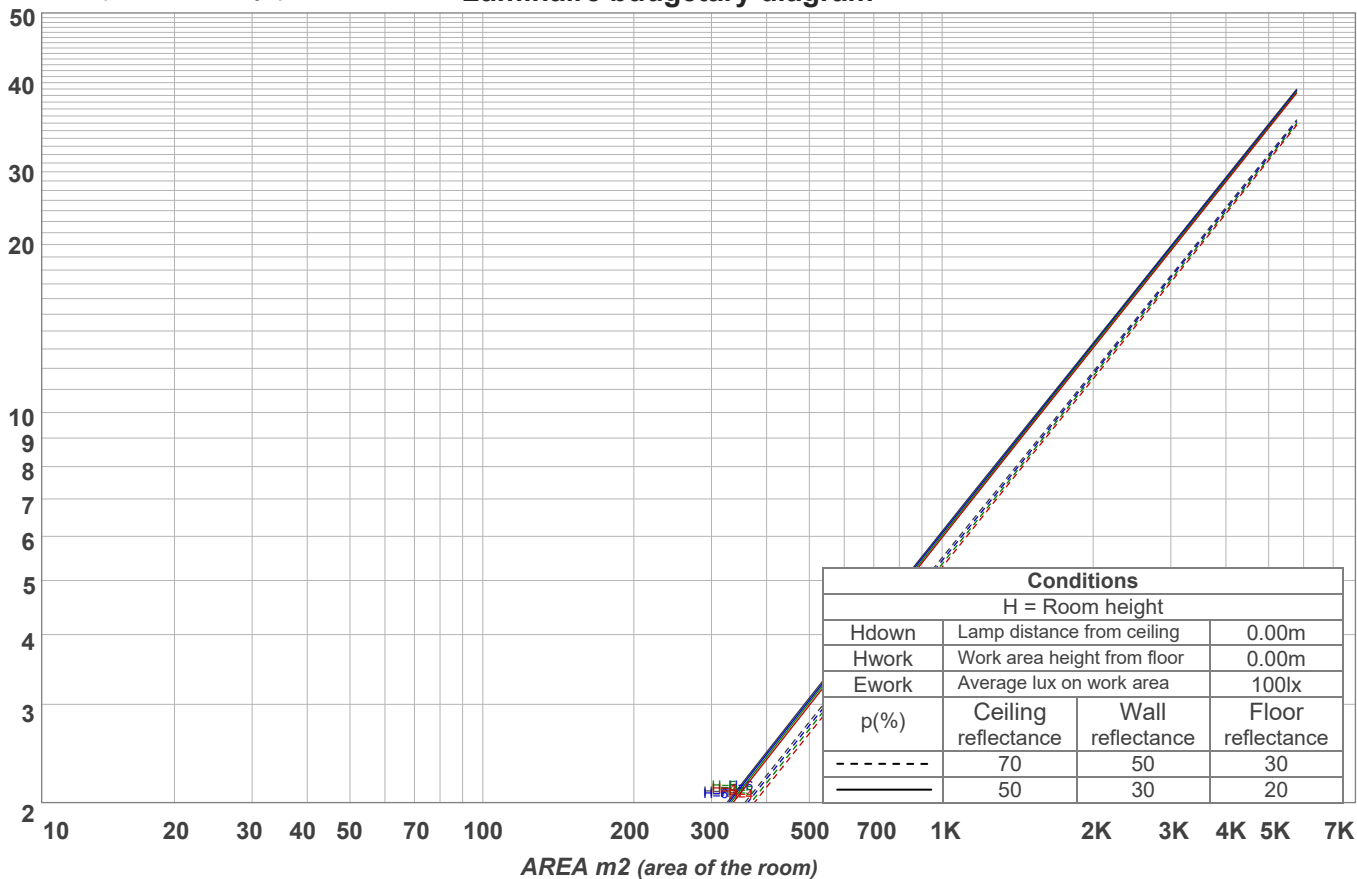
UGR error. Make sure you have installed the LDT editor from Dialux.

Coefficients of Utilization

Ceiling reflectance	80				70				50			30			10			0			
Wall reflectance	70	50	30	10	70	50	30	10	50	30	10	50	30	10	50	30	10	0			
Floor reflectance	20	20	20	20	20	20	20	20	20	20	20	20	20	20	20	20	20	20	20	20	0
RCR	(RCR: Room Cavity Ratio)																				
	Room Values are expressed as percentage of Lumens delivered to the task surface																				
0	118	118	118	118	115	115	115	115	108	108	108	103	103	103	97	97	97	95			
1	114	112	111	109	112	110	108	107	105	104	103	101	100	99	96	96	95	93			
2	112	109	106	104	109	107	104	102	103	101	100	99	98	97	96	95	94	92			
3	109	106	103	100	107	104	101	99	101	99	97	98	96	95	95	94	93	92			
4	107	103	100	98	106	102	99	97	99	97	96	97	95	94	95	94	92	91			
5	106	101	98	96	104	100	98	96	98	96	94	96	95	93	95	93	92	91			
6	104	100	97	95	103	99	96	94	97	95	93	96	94	92	94	93	92	91			
7	103	99	96	94	102	98	95	93	96	94	93	95	93	92	94	92	91	90			
8	102	98	95	93	101	97	94	93	96	94	92	95	93	92	94	92	91	90			
9	101	97	94	92	100	96	94	92	95	93	92	94	92	91	93	92	91	90			
10	100	96	94	92	99	96	93	92	95	93	91	94	92	91	93	92	90	90			

LAMPS (number of lamps)

Luminaire budgetary diagram



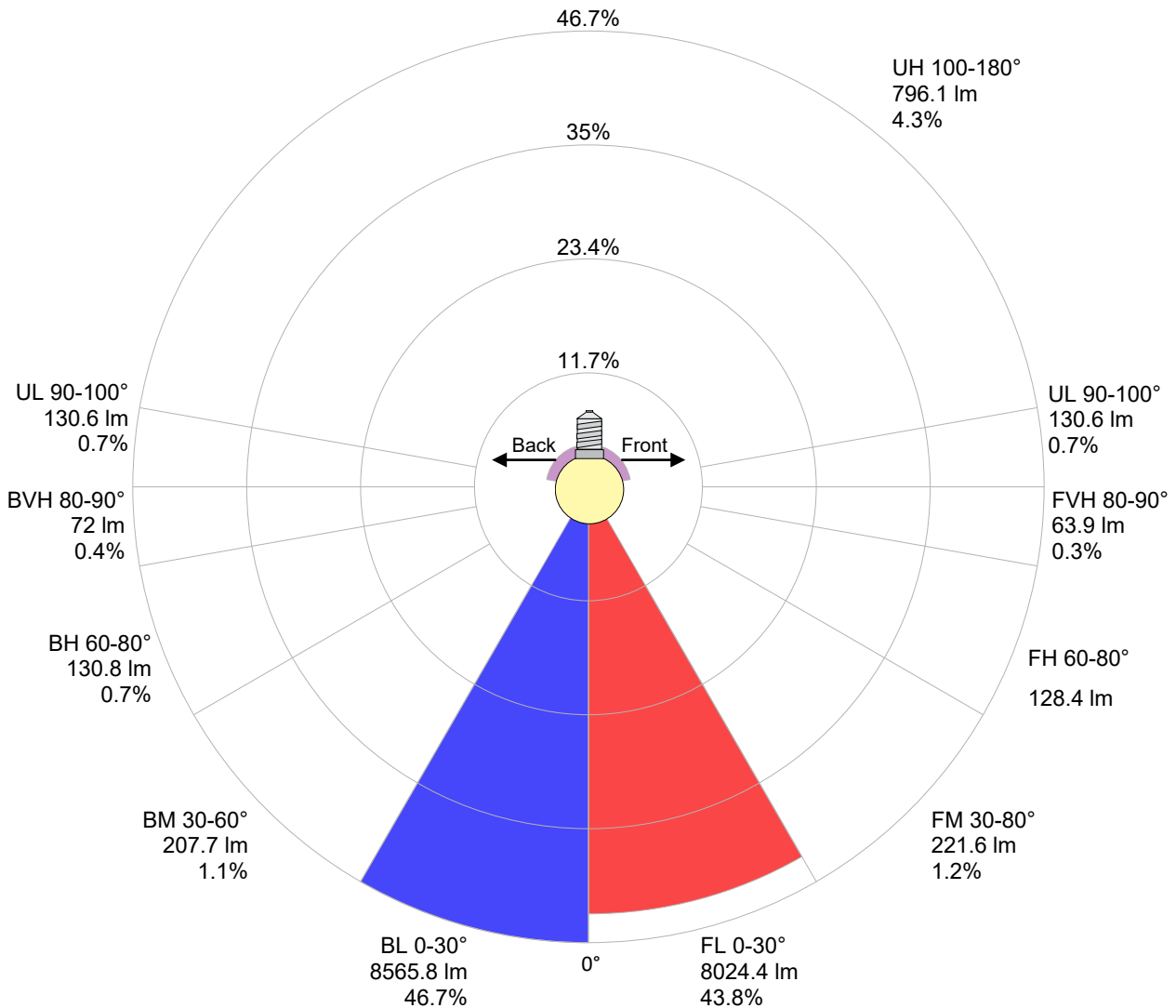
Zonal Lumen Summary

0°-10°	10°-20°	20°-30°	30°-40°	40°-50°	50°-60°	60°-70°	70°-80°	80°-90°
16180 lm	237 lm	167 lm	156 lm	143 lm	132 lm	130 lm	130 lm	137 lm
90°-100°	100°-110°	110°-120°	120°-130°	130°-140°	140°-150°	150°-160°	160°-170°	170°-180°
131 lm	112 lm	111 lm	123 lm	141 lm	130 lm	102 lm	62.7 lm	16.9 lm

LCS table

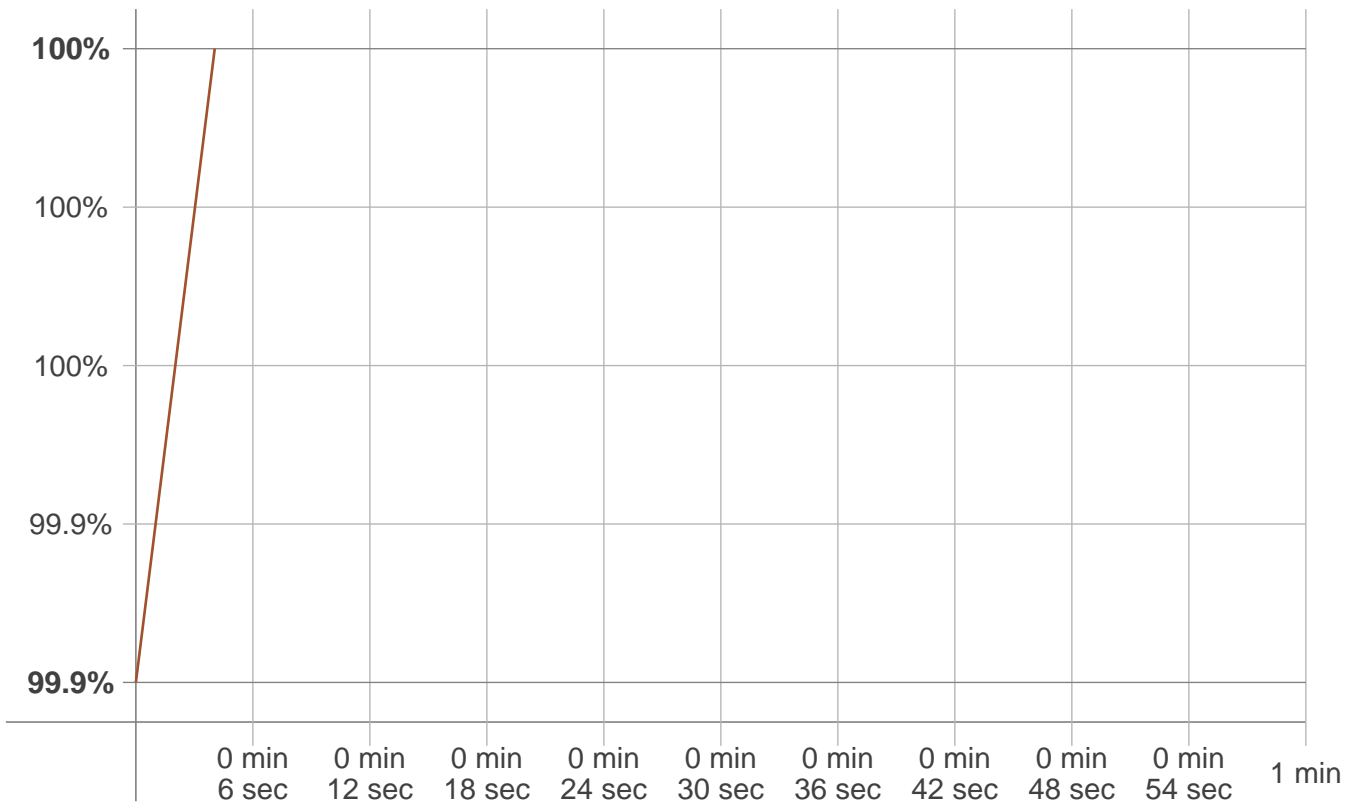
BUG rating:	B5 U4 G1	
Forward light	Lumens	Lumens %
Low(0-30):	8024.4	43.8%
Medium(30-60):	221.6	1.2%
High(60-80):	128.4	0.7%
Very high(80-90):	63.9	0.3%
Back light		
Low(0-30):	8565.8	46.7%
Medium(30-60):	207.7	1.1%
High(60-80):	130.8	0.7%
Very high(80-90):	72	0.4%
Uplight		
Low(90-100):	130.6	0.7%
High(100-180):	796.1	4.3%

LCS graph



Stabilization

Warmup curve



Warmup result

Warmup time:	Not completed
Warmup variation	+0.1%

Warmup conditions

Stable period:	15 min
Stable change max:	2.0%
Minimum time:	15 min

Color temperature change

CCT start	CCT change	CCT end
7103 K	0 K	7103 K

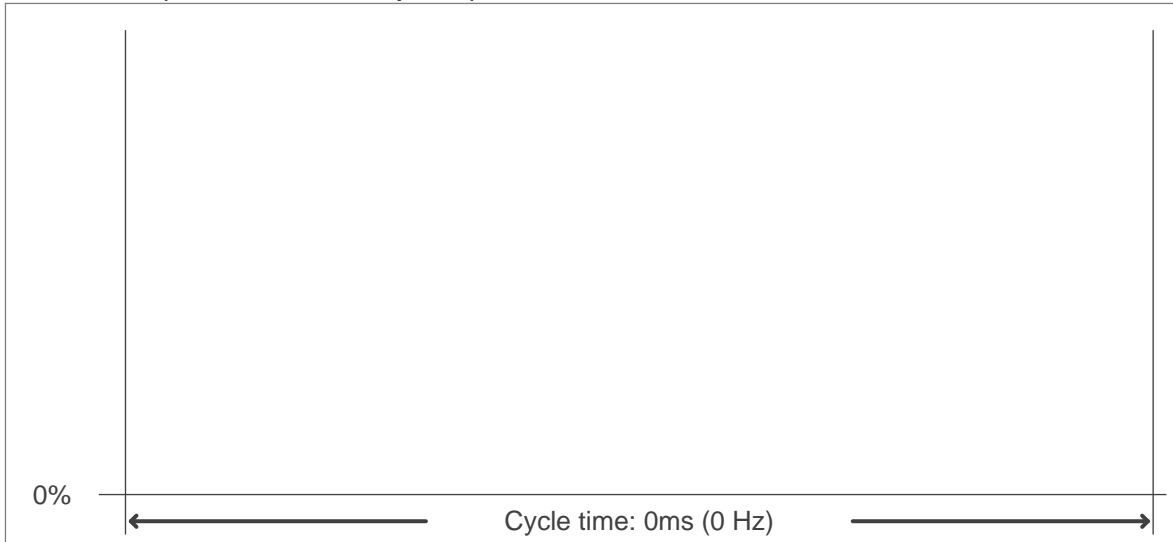
Output change

Output start	Output change	Output end
18325 lm	+17 lm	18341 lm

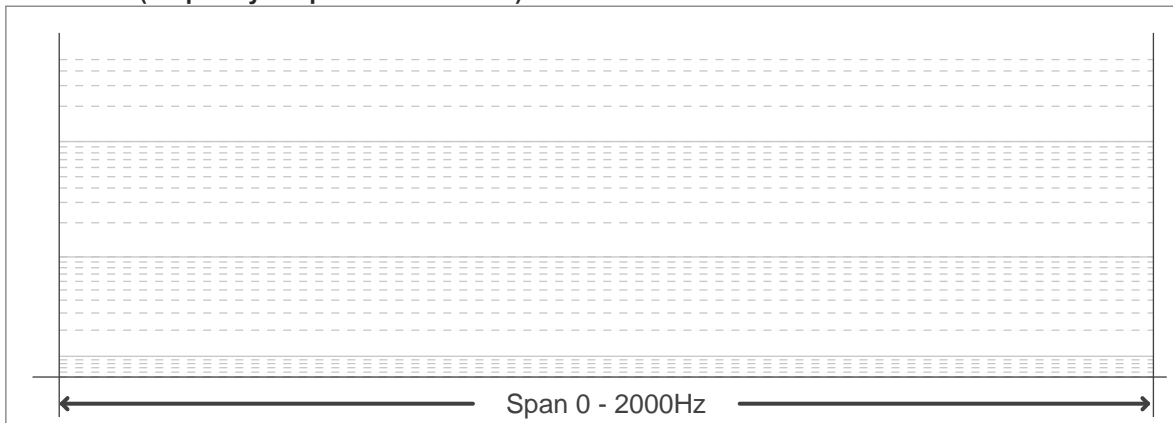
Flicker curve (complete sampled flicker signal)



Flicker frame (frame of one flicker period)



Flicker FFT (frequency scope of flicker curve)



Flicker results:

Flicker frequency:	n/a Hz
Flicker index:	n/a
Flicker percentage:	n/a %
SVM: (Visual flicker)	n/a

Flicker conditions:

Sample rate:	0 samples/second
---------------------	-------------------------