

Light efficiency:

∞ Lumen/Watt

Light quality:

CRI: 73.4

Color temperature:

7115 K

Output: 17635 lm

Peak: 38195 cd

Power: - W

PF: n/a

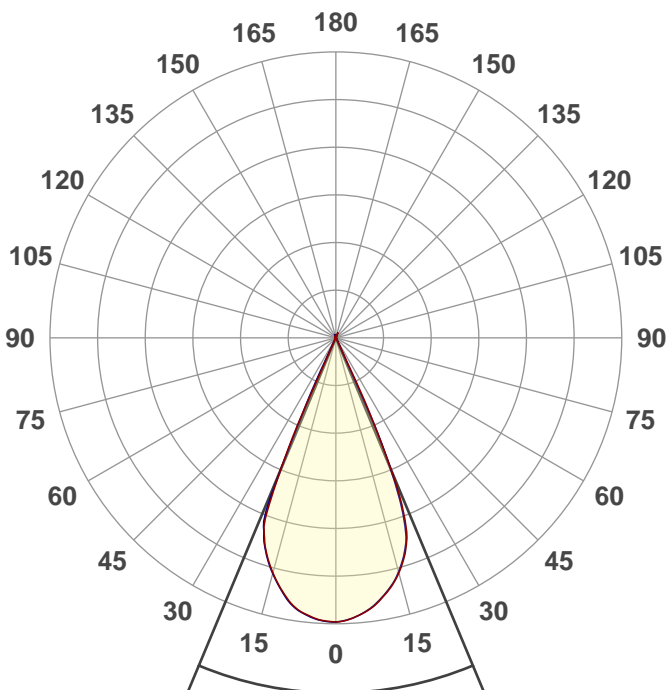


Tracking number: [n/a](#)

Product name:  
**VL550B ZOOM 255 FOCUS 67**  
Item number:

Date and time:  
**2019/10/25 17:11:33**

Description:  
**VL550B ZOOM 255 FOCUS 67**

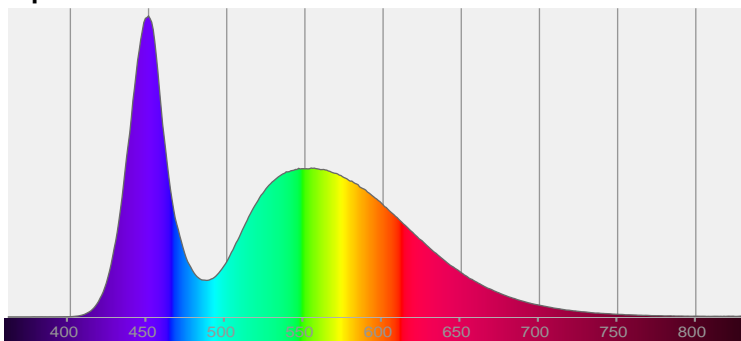


Beam angle **45.4°**

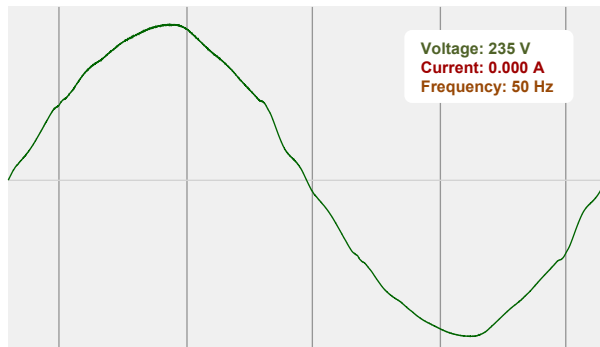


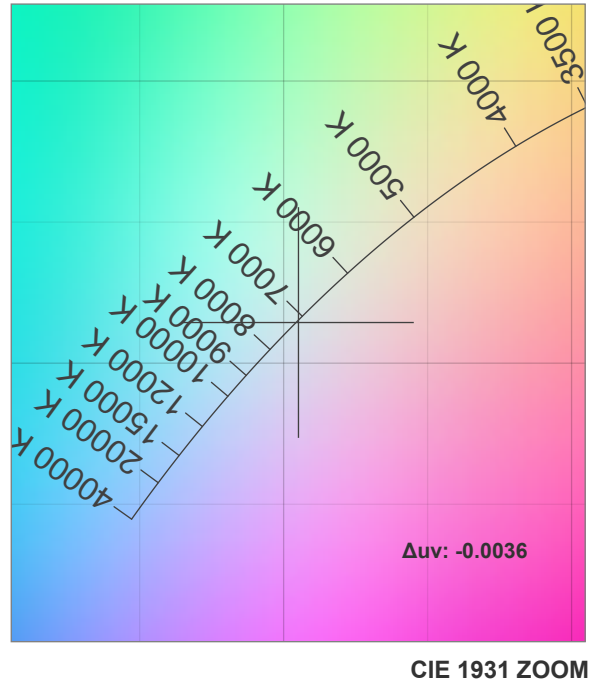
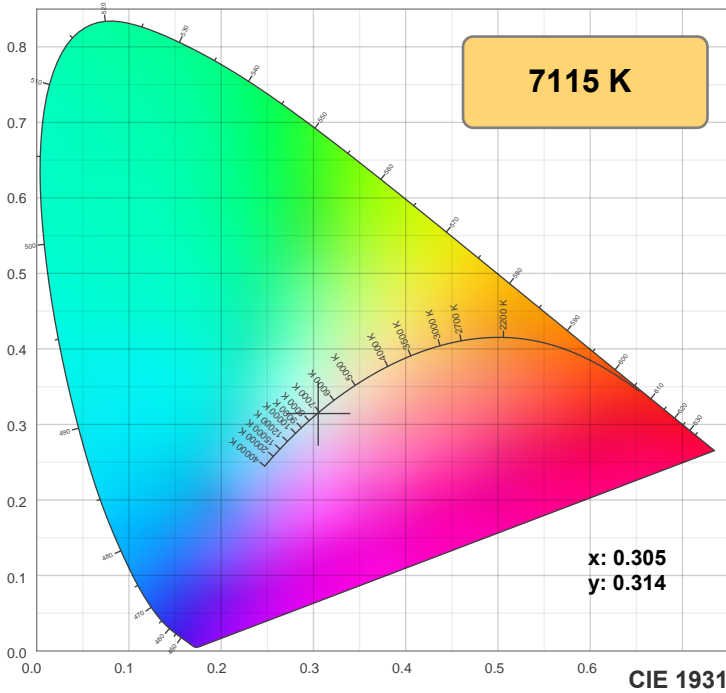
CIE 1931  
x: 0.305  
y: 0.314

Spectra



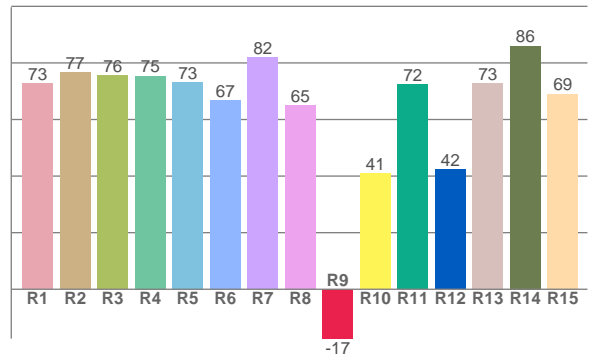
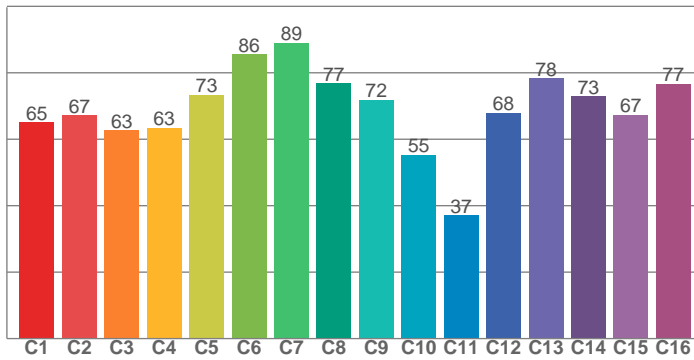
Power





**TM30: 69.3**

**CRI: 73.4 (R1-R8)**



CRI R values, only R1-R8 are used to calculate final CRI value

R1	R2	R3	R4	R5	R6	R7	R8	R9	R10	R11	R12	R13	R14	R15
72.7	76.5	75.6	75.5	73.2	66.9	81.9	65.1	-17.4	40.9	72.3	42.3	72.9	86.1	69.1

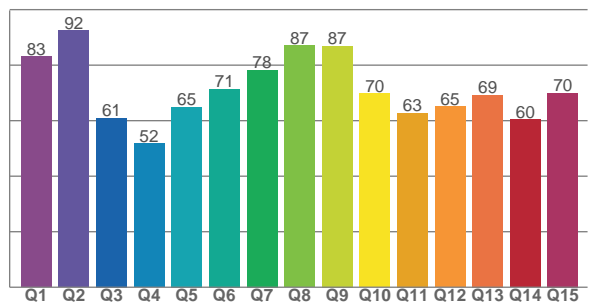
TM30 C values, 16 binned values out of total of 99 C values

C1	C2	C3	C4	C5	C6	C7	C8	C9	C10	C11	C12	C13	C14	C15	C16
65.0	67.2	62.6	63.4	73.3	85.5	89.0	76.8	71.8	55.3	37.1	68.0	78.3	72.9	67.4	76.7

CQS Q values

Q1	Q2	Q3	Q4	Q5	Q6	Q7	Q8	Q9	Q10	Q11	Q12	Q13	Q14	Q15
83.1	92.5	61.0	51.7	64.9	71.4	78.3	87.0	86.9	69.8	62.8	65.0	69.2	60.4	70.0

**CQS: 69.4**



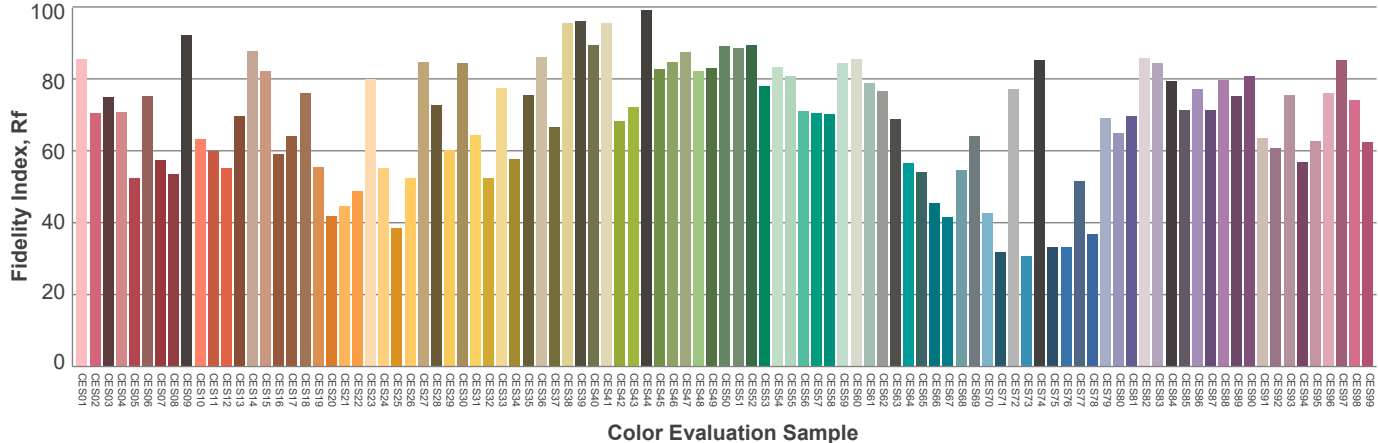
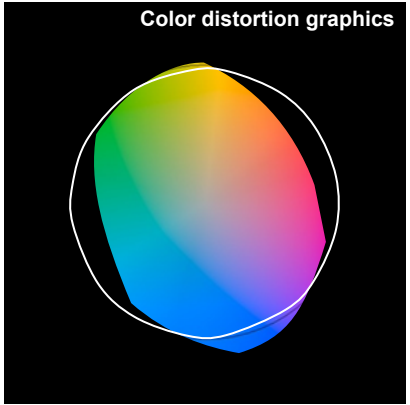
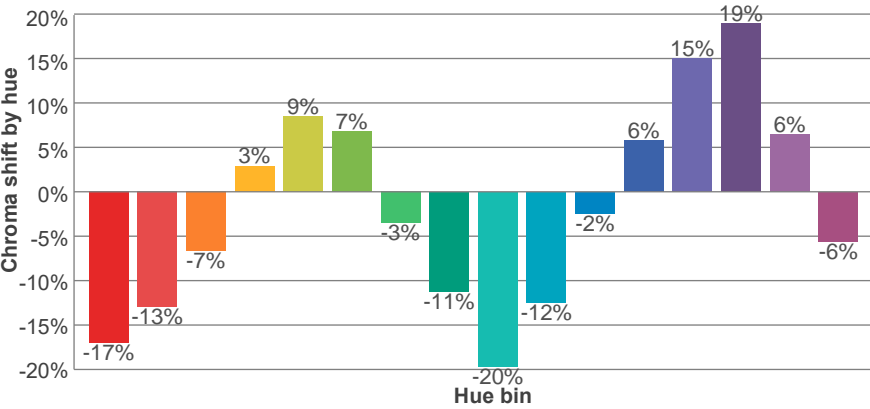
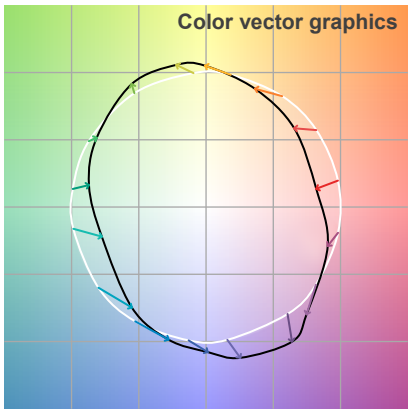
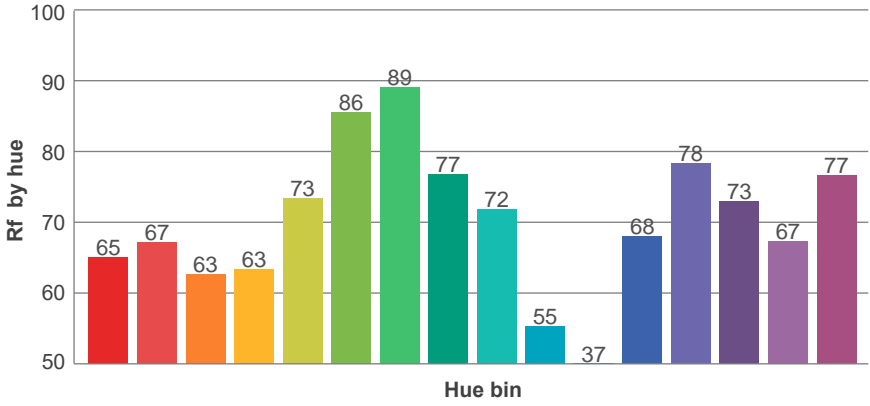
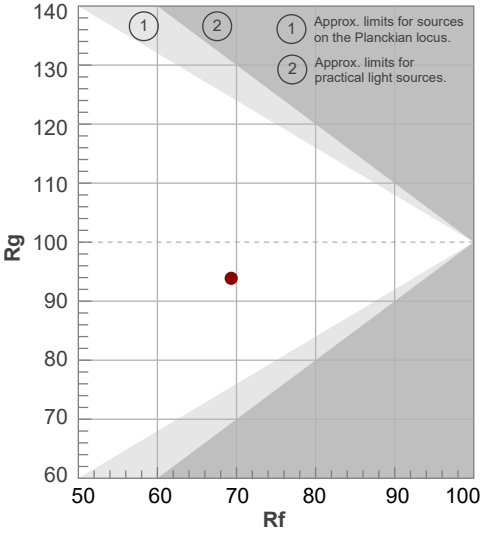
**Color parameters**

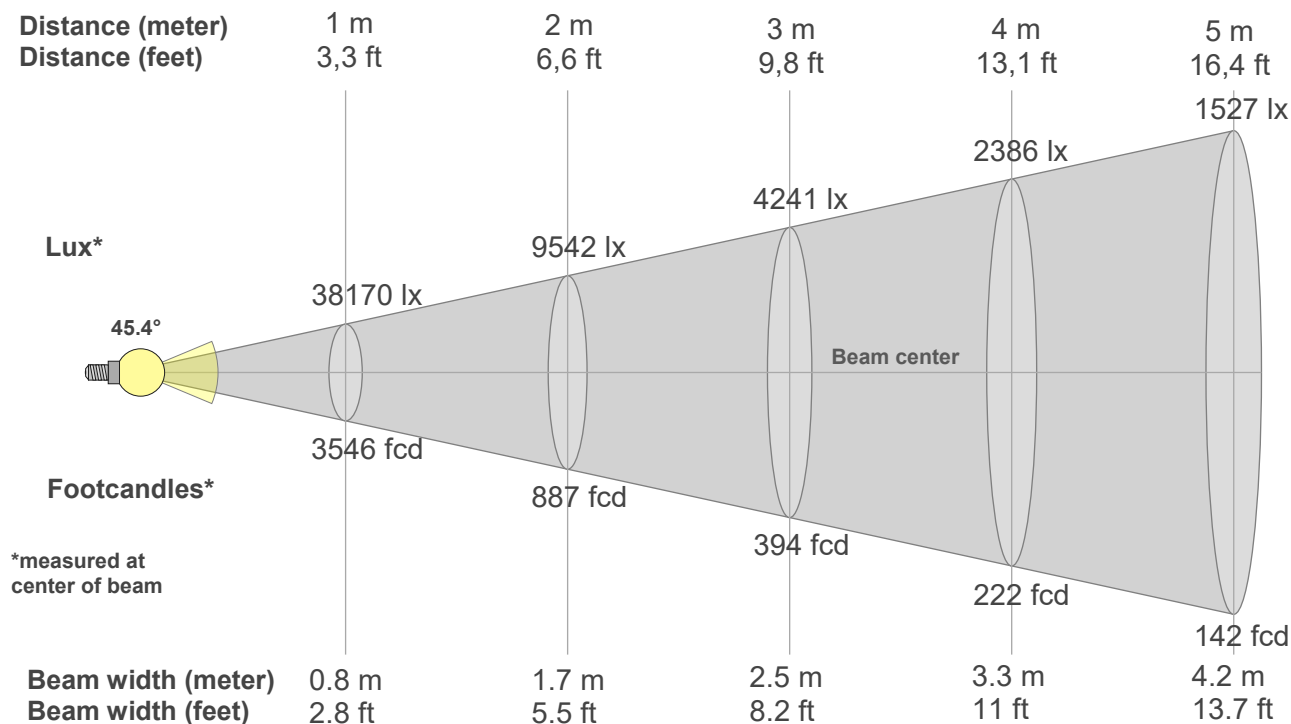
Color temperature	Color rendering index	Red component	Color fidelity	Color gamut	Color quality scale	Color coordinate cie 1931	Color coordinate cie 1931	Color coordinate	Color coordinate	Color deviation from black body
CCT	CRI	CRI R9	TM30 Rf	TM30 Rg	CQS	x	y	u	v	$\Delta uv$
7115 K	73.4	-17.4	69.3	93.9	69.4	0.305	0.314	0.198	0.306	-0.0036

**Rf 69.3**  
Fidelity index Rf

**Rg 93.9**  
Gammut index Rg

Hue Bin	R <sub>f</sub>	Graphic shifts (%)	
		Chroma	Hue
1	65	-17%	-3%
2	67	-13%	10%
3	63	-7%	20%
4	63	3%	20%
5	73	9%	11%
6	86	7%	-2%
7	89	-3%	-5%
8	77	-11%	-5%
9	72	-20%	10%
10	55	-12%	26%
11	37	-2%	28%
12	68	6%	16%
13	78	15%	7%
14	73	19%	-9%
15	67	6%	-22%
16	77	-6%	-11%





**Beam intensities from 1-20m**

1m	2m	3m	4m	5m	6m	7m	8m	9m	10m	11m	12m	13m	14m	15m	16m	17m	18m	19m	20m
3.3ft	6.6ft	9.8ft	13.1ft	16.4ft	19.7ft	23ft	26.2ft	29.5ft	32.8ft	36.1ft	39.4ft	42.7ft	45.9ft	49.2ft	52.5ft	55.8ft	59.1ft	62.3ft	65.6ft
38170lx	9542lx	4241lx	2386lx	1527lx	1060lx	779lx	596lx	471lx	382lx	315lx	265lx	226lx	195lx	170lx	149lx	132lx	118lx	106lx	95lx
3546.1fcd	886.5fcd	394fcd	221.6fcd	141.8fcd	98.5fcd	72.4fcd	55.4fcd	43.8fcd	35.5fcd	29.3fcd	24.6fcd	21fcd	18.1fcd	15.8fcd	13.9fcd	12.3fcd	10.9fcd	9.8fcd	8.9fcd

**Intensities in 0° c-plane**

0°	2°	4°	6°	8°	10°	12°	14°	16°	18°	20°	22°	24°	26°	28°	30°	32°	34°	36°	38°
38.2K	38.0K	37.6K	37.1K	36.4K	35.5K	34.5K	33.4K	31.9K	30.2K	27.7K	22.4K	12.3K	2.0K	0.4K	0.3K	0.3K	0.3K	0.2K	0.2K
100%	100%	98%	97%	95%	93%	91%	87%	84%	79%	72%	59%	32%	5%	1%	1%	1%	1%	1%	1%

**Intensities in 90° c-plane**

0°	2°	4°	6°	8°	10°	12°	14°	16°	18°	20°	22°	24°	26°	28°	30°	32°	34°	36°	38°
38.2K	38.0K	37.6K	37.0K	36.4K	35.5K	34.4K	33.3K	31.8K	29.9K	27.1K	21.5K	11.9K	0.7K	0.4K	0.3K	0.3K	0.2K	0.2K	0.2K
100%	99%	98%	97%	95%	93%	90%	87%	83%	78%	71%	56%	31%	2%	1%	1%	1%	1%	1%	1%

**Intensities in 180° c-plane**

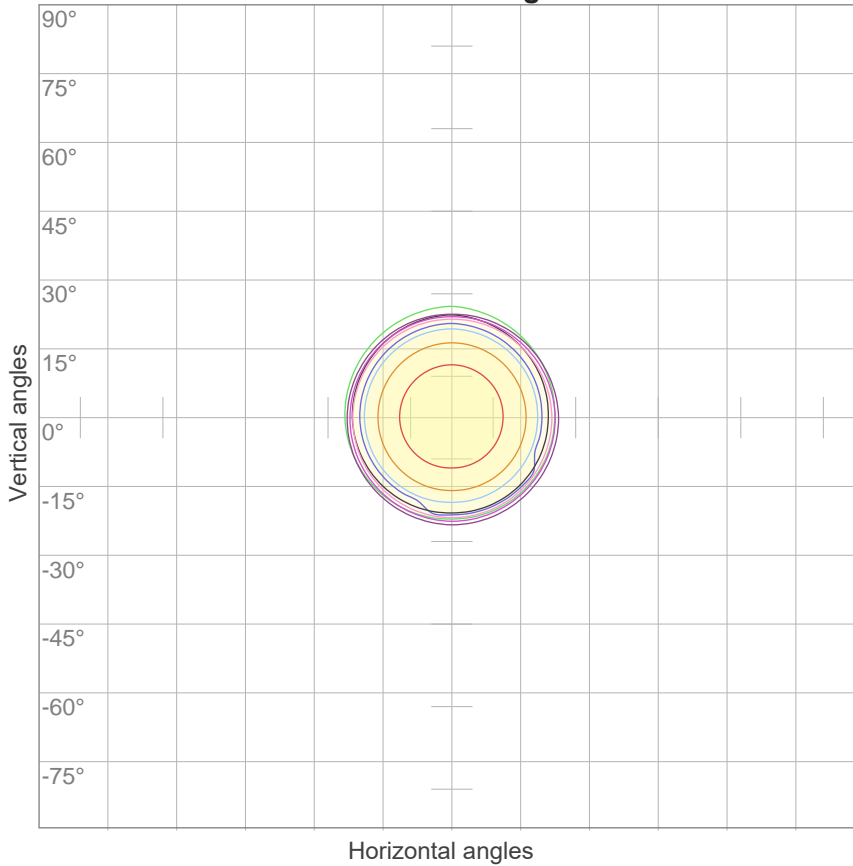
0°	2°	4°	6°	8°	10°	12°	14°	16°	18°	20°	22°	24°	26°	28°	30°	32°	34°	36°	38°
38.2K	38.1K	37.8K	37.4K	36.8K	35.9K	34.7K	33.4K	31.9K	30.2K	27.9K	22.7K	11.1K	0.4K	0.3K	0.2K	0.2K	0.1K	0.1K	0.1K
100%	100%	99%	98%	97%	94%	91%	88%	84%	79%	73%	60%	29%	1%	1%	0%	0%	0%	0%	0%

**Intensities in 270° c-plane**

0°	2°	4°	6°	8°	10°	12°	14°	16°	18°	20°	22°	24°	26°	28°	30°	32°	34°	36°	38°
38.2K	38.1K	37.9K	37.5K	36.9K	36.1K	34.8K	33.5K	32.1K	30.4K	28.3K	24.4K	10.3K	0.9K	0.3K	0.2K	0.2K	0.1K	0.1K	0.1K
100%	100%	99%	98%	97%	94%	91%	88%	84%	80%	74%	64%	27%	2%	1%	1%	0%	0%	0%	0%

Beam angle 50%	Field angle 10%	Cutoff angle 2,5%	Intensity ratio in 120° cone	Intensity ratio in 90° cone
45.4°	50.6°	51.6°	96.1%	95.4%

**ISO candela diagram**



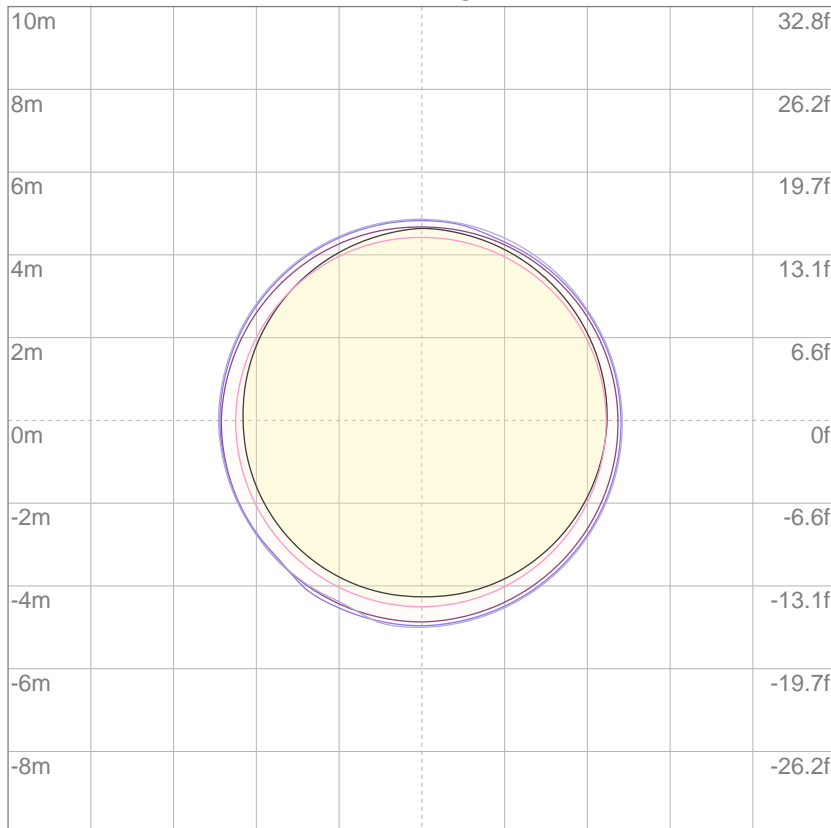
10%	3817 cd
20%	7634 cd
30%	11451 cd
40%	15268 cd
50%	19085 cd
60%	22902 cd
70%	26719 cd
80%	30536 cd
90%	34353 cd

Conditions:

Number of c-planes: 4

Candela at center: 38170 cd

**ISO lux diagram**



3%	11.5 lx
5%	19.1 lx
10%	38.2 lx
30%	115 lx
50%	191 lx

Conditions:

Number of c-planes: 4

Lux at center: 382 lx

*Lux distribution on a surface when lamp is mounted at 10 meters from the surface.*

**Glare Evaluation According to UGR**

p Ceiling	70	70	50	50	30	70	70	50	50	30
p Walls	50	30	50	30	30	50	30	50	30	30
p Floor	20	20	20	20	20	20	20	20	20	20
Room size X Y	Viewing direction at right angles to lamp axis					Viewing direction parallel to lamp axis				
n/a	n/a	n/a	n/a	n/a	n/a	n/a	n/a	n/a	n/a	n/a
n/a	n/a	n/a	n/a	n/a	n/a	n/a	n/a	n/a	n/a	n/a
n/a	n/a	n/a	n/a	n/a	n/a	n/a	n/a	n/a	n/a	n/a
n/a	n/a	n/a	n/a	n/a	n/a	n/a	n/a	n/a	n/a	n/a
n/a	n/a	n/a	n/a	n/a	n/a	n/a	n/a	n/a	n/a	n/a
n/a	n/a	n/a	n/a	n/a	n/a	n/a	n/a	n/a	n/a	n/a
n/a	n/a	n/a	n/a	n/a	n/a	n/a	n/a	n/a	n/a	n/a
n/a	n/a	n/a	n/a	n/a	n/a	n/a	n/a	n/a	n/a	n/a
n/a	n/a	n/a	n/a	n/a	n/a	n/a	n/a	n/a	n/a	n/a
n/a	n/a	n/a	n/a	n/a	n/a	n/a	n/a	n/a	n/a	n/a
n/a	n/a	n/a	n/a	n/a	n/a	n/a	n/a	n/a	n/a	n/a
n/a	n/a	n/a	n/a	n/a	n/a	n/a	n/a	n/a	n/a	n/a
Variation of the observer position for the luminaire distance S										
n/a	n/a					n/a				
n/a	n/a					n/a				
n/a	n/a					n/a				
Standard table	n/a					n/a				
Correction summand	n/a					n/a				
Corrected glare indices referring to 17635 lm total luminous flux										

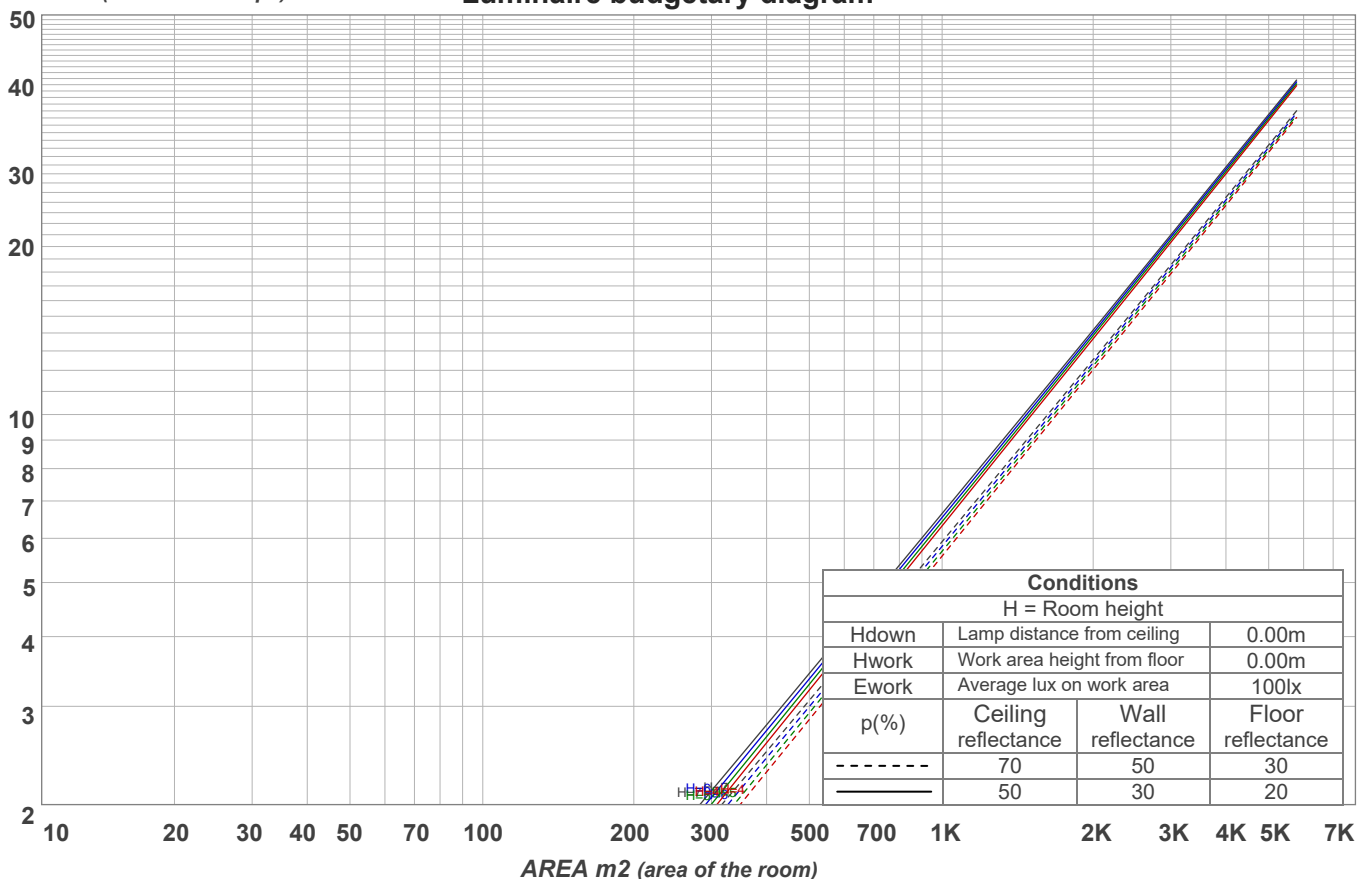
UGR error. Make sure you have installed the LDT editor from Dialux.

## Coefficients of Utilization

Ceiling reflectance	80				70				50			30			10			0			
Wall reflectance	70	50	30	10	70	50	30	10	50	30	10	50	30	10	50	30	10	0			
Floor reflectance	20	20	20	20	20	20	20	20	20	20	20	20	20	20	20	20	20	20	20	20	0
RCR	(RCR: Room Cavity Ratio)																				
	Room Values are expressed as percentage of Lumens delivered to the task surface																				
0	118	118	118	118	115	115	115	115	109	109	109	104	104	104	99	99	99	97			
1	114	111	109	107	111	109	107	105	104	103	101	100	99	98	96	95	95	93			
2	109	105	102	99	107	103	100	98	100	97	95	96	94	93	93	92	90	89			
3	105	100	96	93	103	99	95	92	96	93	90	93	90	88	90	88	87	85			
4	101	95	91	88	100	94	90	87	92	88	86	90	87	84	87	85	83	82			
5	98	91	87	83	96	90	86	83	88	85	82	86	83	81	85	82	80	79			
6	95	88	83	79	93	87	82	79	85	81	78	83	80	78	82	79	77	76			
7	91	84	79	76	90	83	79	76	82	78	75	81	77	75	79	76	74	73			
8	88	81	76	73	87	80	76	73	79	75	72	78	74	72	77	74	71	70			
9	85	78	73	70	84	77	73	70	76	72	70	75	72	69	74	71	69	68			
10	83	75	71	68	82	75	70	67	74	70	67	73	69	67	72	69	67	66			

LAMPS (number of lamps)

## Luminaire budgetary diagram



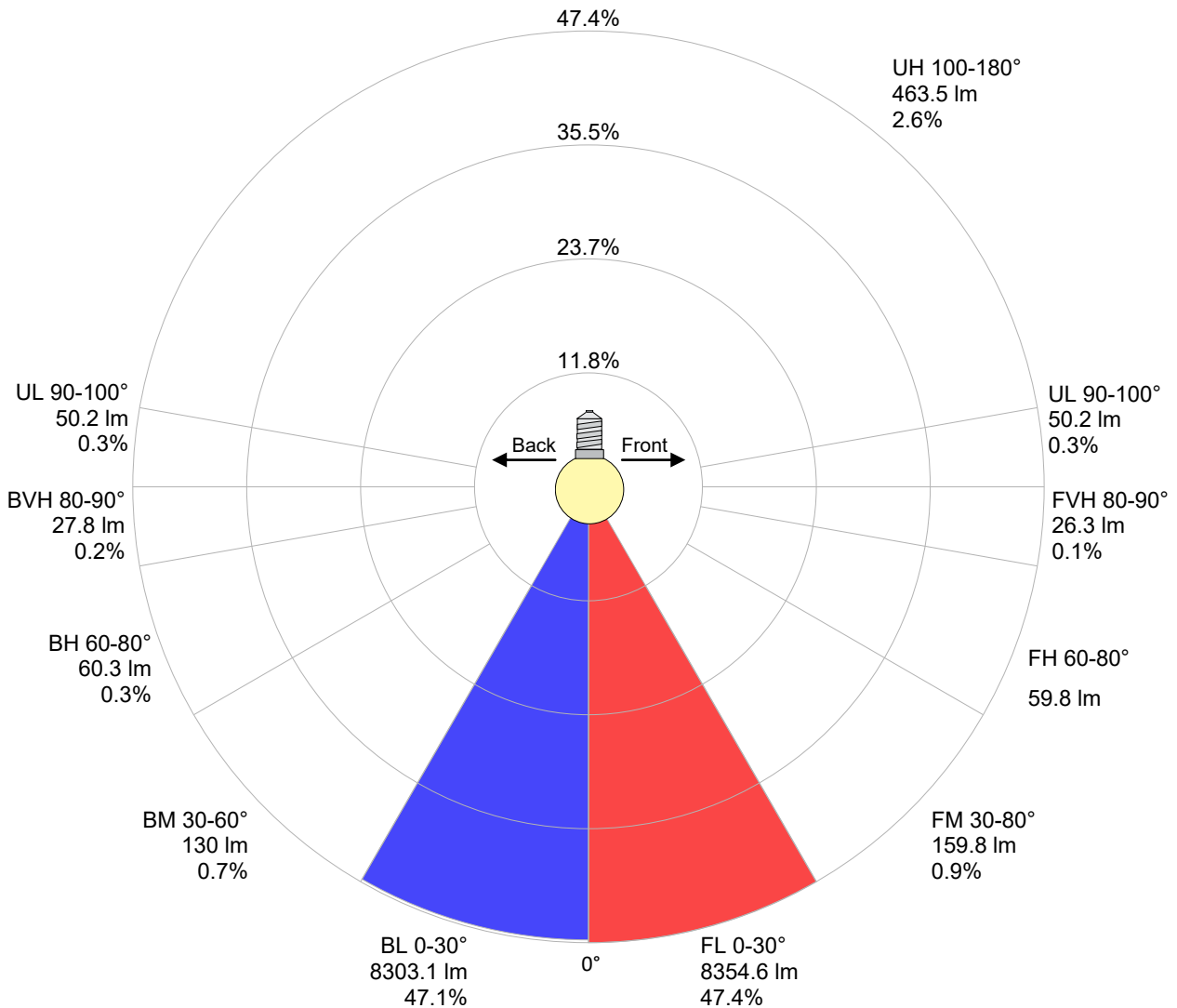
## Zonal Lumen Summary

0°-10°	10°-20°	20°-30°	30°-40°	40°-50°	50°-60°	60°-70°	70°-80°	80°-90°
3526 lm	9068 lm	4064 lm	116 lm	94.3 lm	80.4 lm	62.4 lm	57.5 lm	54.0 lm
90°-100°	100°-110°	110°-120°	120°-130°	130°-140°	140°-150°	150°-160°	160°-170°	170°-180°
50.1 lm	49.6 lm	55.7 lm	69.5 lm	82.7 lm	84.4 lm	68.5 lm	40.5 lm	12.9 lm

LCS table

BUG rating:	B5 U3 G1	
<b>Forward light</b>	Lumens	Lumens %
Low(0-30):	8354.6	47.4%
Medium(30-60):	159.8	0.9%
High(60-80):	59.8	0.3%
Very high(80-90):	26.3	0.1%
<b>Back light</b>		
Low(0-30):	8303.1	47.1%
Medium(30-60):	130	0.7%
High(60-80):	60.3	0.3%
Very high(80-90):	27.8	0.2%
<b>Uplight</b>		
Low(90-100):	50.2	0.3%
High(100-180):	463.5	2.6%

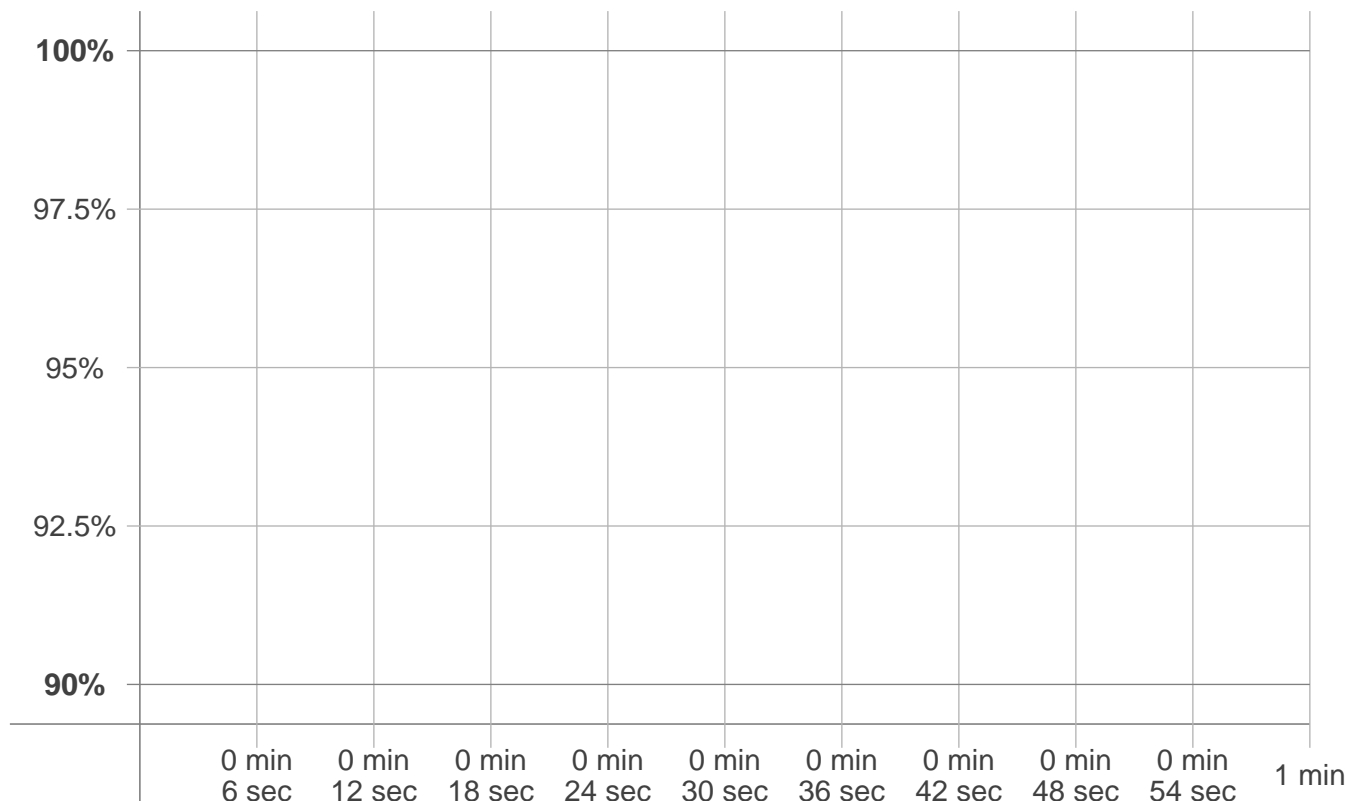
LCS graph





## Stabilization

### Warmup curve



### Warmup result

Warmup time:	n/a
Warmup variation	n/a%

### Warmup conditions

Stable period:	n/a
Stable change max:	n/a%
Minimum time:	n/a

### Color temperature change

CCT start	CCT change	CCT end
n/a K	n/a K	7115 K

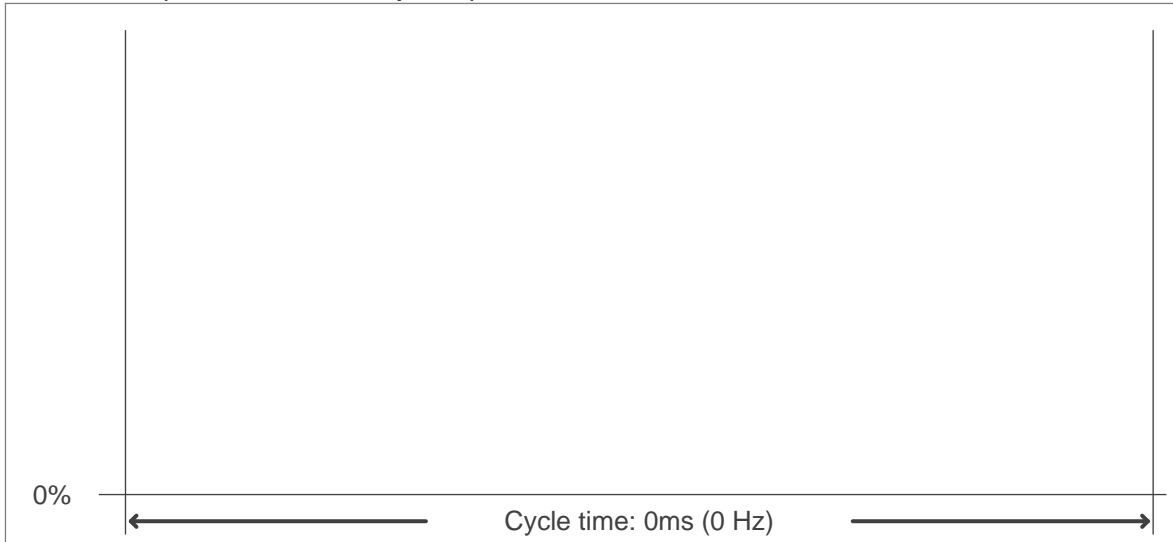
### Output change

Output start	Output change	Output end
n/a lm	n/a lm	17635 lm

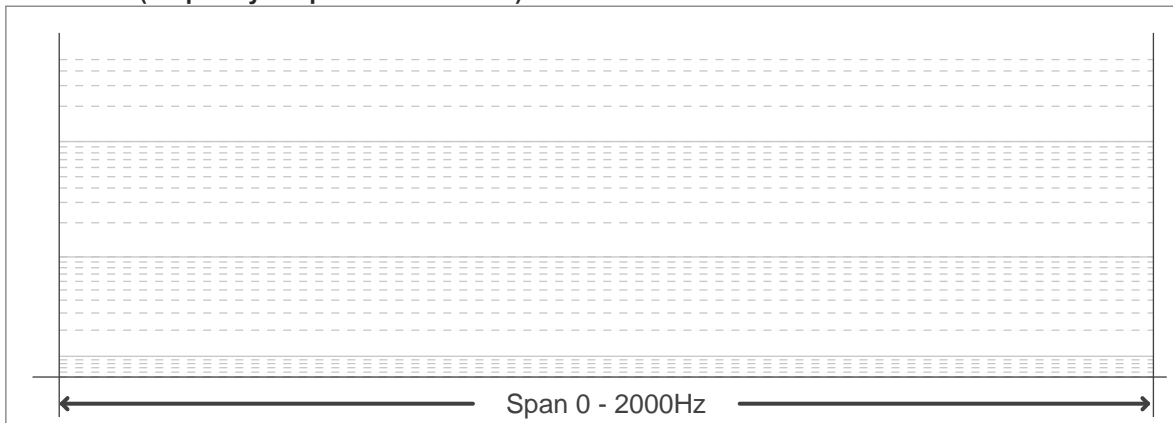
**Flicker curve (complete sampled flicker signal)**



**Flicker frame (frame of one flicker period)**



**Flicker FFT (frequency scope of flicker curve)**



**Flicker results:**

<b>Flicker frequency:</b>	<b>n/a Hz</b>
<b>Flicker index:</b>	<b>n/a</b>
<b>Flicker percentage:</b>	<b>n/a %</b>
<b>SVM: (Visual flicker)</b>	<b>n/a</b>

**Flicker conditions:**

<b>Sample rate:</b>	<b>0 samples/second</b>
---------------------	-------------------------