



Release Notes (Release 7.4)

Release 7.4 of ZerOS is a bug fix software release for the ORB, ORB XF, Leap Frog 48, Leap Frog 96, Solution series and Frog 2 desks. These release notes describe the changes and bug fixes that have been implemented in the ZerOS desk software between versions 7.3 and 7.4. For convenience, version 7.3 to 4.4 release notes are included after this document.

Bug Fixes

ZOS-3824	Desk does not boot when USB device are connected
ZOS-4544	Various 'bad' USB devices lock up the consoles
	Various other minor bug fixes



Release Notes (Release 7.3)

Release 7.3 of ZerOS is a bug fix software release for the ORB, ORB XF, Leap Frog 48, Leap Frog 96 and Frog 2 desks. In addition it is the first software release to fully support the Solution series consoles. These release notes describe the changes and bug fixes that have been implemented in the ZerOS desk software between versions 7.2 and 7.3. For convenience, version 7.2 to 4.4 release notes are included after this document.

Bug Fixes

ZOS-4037	Added support for next generation LCDs
ZOS-4007	Fixed a bug which sometimes happened when loading show files from older versions and opening the program window
	Various other minor bug fixes



Release Notes (Release 7.2)

Release 7.2 of ZerOS is a bug fix software release for the ORB, ORB XF, Leap Frog 48, Leap Frog 96 and Frog 2 desks. In addition it is the first software release to fully support the Solution series consoles. These release notes describe the changes and bug fixes that have been implemented in the ZerOS desk software between versions 7.1 and 7.2. For convenience, version 7.1 to 4.4 release notes are included after this document.

Bug Fixes

ZOS-3836	Load Show now has sortable fields to sort by date or size order
ZOS-3951	Virtual Dimmer fixtures sometimes didn't 'highlight' properly
ZOS-3835	Recording a UDK on ORB XF sometimes recorded the wrong page
ZOS-3921	Added support for Solution series
ZOS-3954	Using POS> EFFECTS > POS caused 8 bit behaviour of position wheels
ZOS-3914	Increased the maximum speed of a chase cue stack to 600 on ORBs



Release Notes (Release 7.1)

Release 7.1 of ZerOS is a bug fix software release for the ORB, ORB XF, Leap Frog 48, Leap Frog 96 and Frog 2 desks. These release notes describe the changes and bug fixes that have been implemented in the ZerOS desk software between versions 7.0 and 7.1. For convenience, version 7.0 to 4.4 release notes are included after this document.

Bug Fixes

ZOS-3781	Editing in the comments field was editing the incorrect memory
ZOS-3780	Submasters with Page Lock active didn't always activate correctly
ZOS-3810	Macros referring to UDK pages didn't always activate correctly
ZOS-3759	SHIFT+GROUPS & SHIFT+EFFECTS didn't open the applicable windows
ZOS-3786	Submasters Window didn't draw correctly in some circumstances

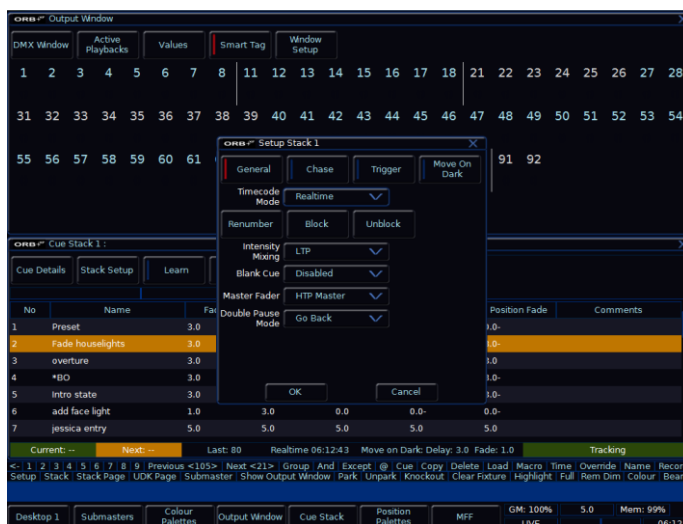


Release Notes (Release 7.0)

Release 7.0 of ZerOS is a major new software release for the ORB, ORB XF, Leap Frog 48, Leap Frog 96 and Frog 2 desks. These release notes describe the changes and bug fixes that have been implemented in the ZerOS desk software between versions 6.1 and 7.0. For convenience, version 6.1 to 4.4 release notes are included after this document.

New Skin (ZOS-3318)

ZerOS has had a face lift in version 7.0 software. Following market feedback, a new skin has been designed from the ground up to be clearer to use, more familiar and easier on the eyes when operating in low light environments. This skin is now loaded as default on ORB series' consoles and can be selected on any other console type using the Setup / Desk Setup / Displays tab, under Colour Scheme.



New Fixture Library (ZOS-3646)

ZerOS 7.0 includes the new Zero 88 fixture library, release 23, as standard. This release includes all the latest fixture profiles including 2566 fixtures from 179 manufacturers.

Colour Filter (Gel) lookup (ZOS-2835)



New in ZerOS 7.0 is the Colour Filter library. This library is integrated into the Colour Palettes window and allows you to select from a manufacturer and filter number, and apply that to any colour mixing fixture.

Syntax commands on ORB series' consoles support the selection of the colour filter by syntax, for example:

1 THRU 6 COLOUR {Lee} 201 ENTER

The supported manufacturers in this release are Rosco, Lee and Apollo.

Fixture Levels Window (ZOS-2881)

The new Fixture Levels window, for ORB series' and Frog 2, provides in depth viewing and editing of the entire cue list in one easy to read table.

Designed to simplify editing of complex tracking shows, the Fixture Levels window (accessed from the Fixture Levels button in the Cue Stack window) provides a concise view of the entire cue list in one easy to read table.

Double clicking on a cell in the table allows you to edit it's value, or remove it if necessary, to easily fix any tracking issues in a highly visual way.



The Window Setup button allows you to define the behaviour of this window, including filtering unused attributes or parameters to make for a clear and concise view.

Rearrange Record options window (ZOS-3289)



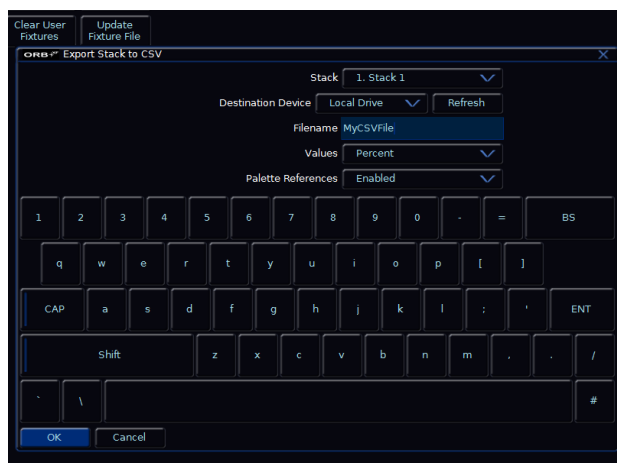
The Record Options window has now been re-arranged for simplicity. All the functionality remains the same, but the sequence of the buttons has changed. If necessary, you can switch back to the old format using the Setup, Desk Setup, Behaviour option.

'No Effect' palette (ZOS-3313)

When Auto-Palettes are generated now, a 'no effect' palette is generated as the first available palette. This provides an easy way to stop running effects.

Export CSV file option (ZOS-3458)

It is now possible to export your cue list as a comma separated file. The export CSV option, found in SETUP / FILES / Export CSV allows you to create a comma separated export of your entire cue list, which can then be loaded into spreadsheet or database software for easy manipulation. Exported CSV files include timing information, channel data and palette references, if required. This information can then be easily formatted for print, providing an ideal way to keep a paper backup of your show file.



Page Lock for UDKs and Submasters (ZOS-3459)



Any Submaster or User Definable Key can now be set to Page Lock. When Page Lock is engaged, the programmed submaster or UDK will stay available regardless of what page the rest of the items are changed to.

Page Locked UDKs or Submasters are ideal for things like house lights and smoke machines that you wish to retain access to throughout your show, whilst still being able to change page of the remainder of the console.

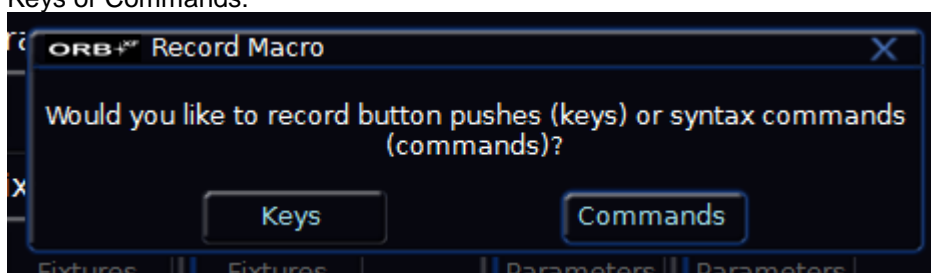
To activate page lock, enter the setup for the item you wish to lock (hold SETUP and push that items flash button).

The Page Lock option allows you to define the lock as Yes or No – the default behaviour is No.

Command Macros (ZOS-3582)

Command Macros are a new type of macro for Frog 2 and ORB series' consoles. These macros allow you to store the syntax commands entered instead of the front panel buttons pushed. The difference here is that syntax keys in particular can move depending on the previous item selected, so now you can store a macro that will access the actual syntax you pushed, rather than the key you pushed to achieve that syntax.

When a macro record is initiated (using RECORD MACRO n ENTER), a popup will prompt you to select Keys or Commands:



Select the option required, and then proceed to record the macro as usual. Macro recording is still terminated by pushing the MACRO key, and the macros can be assigned to cues, submasters, UDKs, etc, as required.

Macro Speed Option (ZOS-3460)

Another new option with regard to macros introduced in ZerOS 7.0 is the addition of the Macro Speed option. Macros can now be played back Fast or Slow, depending on your requirements. Fast Macros are ideal for quick command sets you want to initiate whilst programming, whilst Slow macros can be useful for more complex macros, ensuring the console has time to process the necessary commands before moving on.



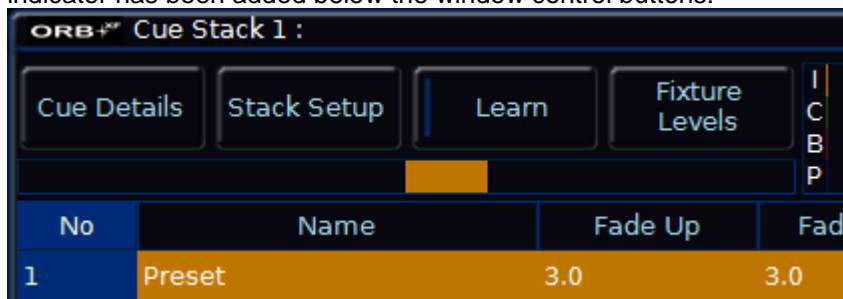
The Macro Speed is defined in the Macro Setup window, which is accessed by using the syntax MACRO n ENTER or holding down SETUP and pushing the Macro key (either UDK or MFK). Select the option you require and then push OK to set that speed.

Page n ENTER – ORB series (ZOS-3461)

Entering the syntax PAGE n ENTER on the ORB Series now changes all active items (UDKs, Submasters, Playbacks, etc) to the same page number. This is useful for quick shows where the added complexity of separate pages is not required.

Time Override Indicator on XF (ZOS-3205)

It is now possible to view the override fader value on the ORB XF – in the Cue Stack Window, an indicator has been added below the window control buttons:



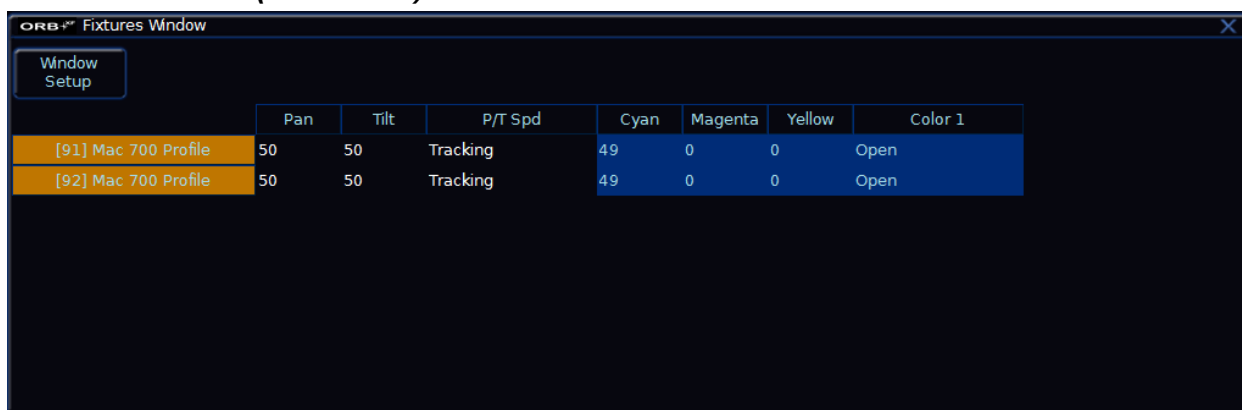
Screen MFK for Leap Frog range (ZOS-3680)

A new multi function key is available on Special Page 1 for Leap Frog 48 and Leap Frog 96, 'Screen'. Pushing Screen moves the selected window from Desktop 1 (the default monitor output) to any remote monitor sessions currently active, in sequence. For example, you may wish to set up Desktop 2 as a palette view on a remote monitor.

This window could then be used on the main Leap Frog monitor output by using the Desktop softkey in the bottom left of the monitor screen.



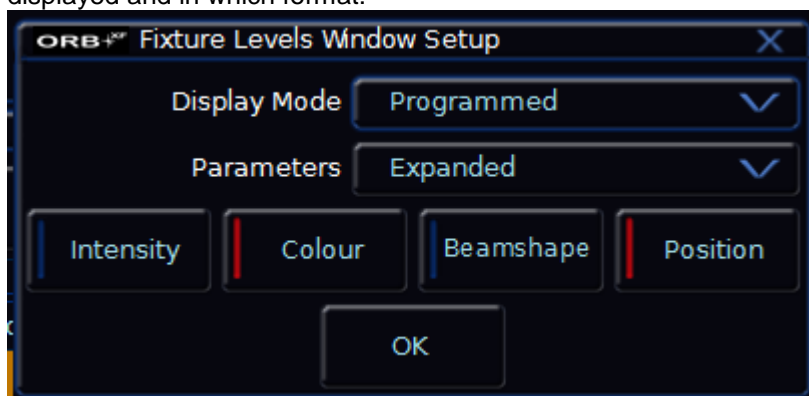
Fixture Window (ZOS-3659)



	Pan	Tilt	P/T Spd	Cyan	Magenta	Yellow	Color 1
[91] Mac 700 Profile	50	50	Tracking	49	0	0	Open
[92] Mac 700 Profile	50	50	Tracking	49	0	0	Open

A new window is now available to open from the Output Window, dedicated to making programming of moving fixtures simpler. The Fixture Window is opened by pushing the Other Windows button and selecting Fixture Window: This new window has various options to allow you to view programmed, selected or all fixtures, and varying the attributes shown in the window depending upon your requirements.

Pushing the Window Setup button allows you to define which parameters are displayed and in which format:



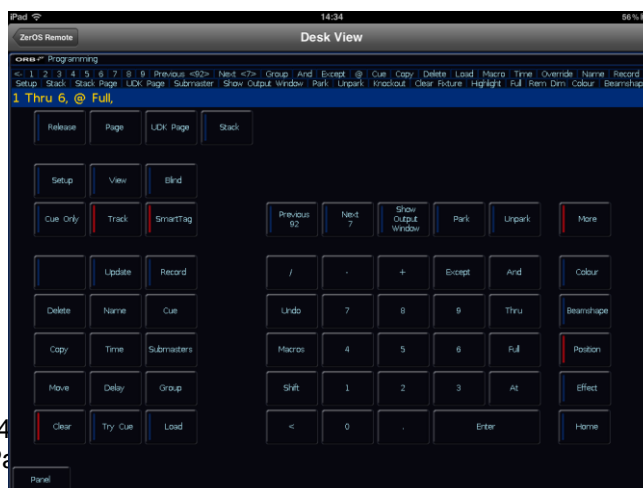

Other Windows	Values		
DMX Window	3	4	5
Active Playbacks	27	28	29
Fixture Window	51	52	53
Cancel			

This window replaces the Program Window on Leap Frog and Frog 2 consoles.

In addition to this, the Output Window now can be set to not show the Fixture Section (ZOS-3734) in the Window Setup.

Programming View (ZOS-3676)

A new programming view has been added to ZerOS, ideal for use with touchscreen controllers such as the iPad, as a remote programming interface. This view emulates the functionality of the keypads on the console. To hold a key down, simply hold your finger on a button for 2 seconds.

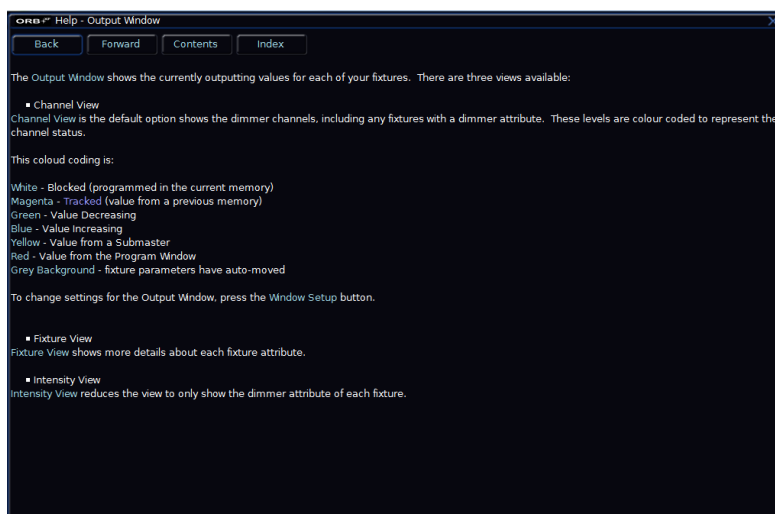


Revised Default Settings (ZOS-3294)

Following market feedback, a number of default settings have been modified:

	New Default Value
Cue Stack Release on Lower	Enabled
Cue Stack Trigger on Raise	Enabled
Move on Dark Delay	1 second
Move on Dark Fade	3 seconds
Encoder Sensitivity	40%
Cue Stack Colour Fade	3 seconds
Cue Stack Beam Fade	0 seconds
Cue Stack Position Fade	3 seconds
Hide Unpatched Channels	Enabled
ORB Playbacks 1 to 5	Playback Mode
ORB Playbacks 6 to 10	Submaster Mode
Submaster / UDK Colour Fade	0 seconds
Submaster / UDK Beam Fade	0 seconds
Submaster / UDK Position Fade	0 seconds
Screen Timeout (mins)	Disabled
Default View	Updated on ORB XF

Online Help (ZOS-3621)



All ZerOS desks now offer Online Help. On ORB XF this is accessed with the HELP key, on all other desks it uses the ? or Help button in the top right of each monitor window.

This online help is context-sensitive so will show you the article related to the screen you are displaying. To view an index of all articles, push the Index button at the top of the screen.

Cue Stacks on MFFs now have improved syntaxes (ZOS-3691)

You can now go back, release and setup a cue stack on an MFF on ORB XF using these shortcuts:

Back: UNDO+GO

SETUP: SETUP+GO

RELEASE: RELEASE+GO

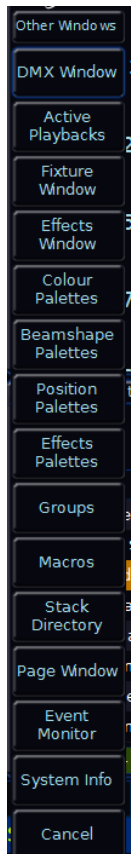
Command Line improvements on Leap Frog 48 (ZOS-3743)

Using the Special Page 2 'Show Command Line' function on Leap Frog consoles it is now possible to directly control DMX channels for testing, regardless of patch. These channels will not be stored, and can be cleared using the CLEAR key.

Syntax: {DMX} nnn @ <level> ENTER

Another improvement to the command line on the Leap Frog 48 is the addition of support of the REM DIM command – hold SHIFT and push FULL with a channel selected, eg: 1 <SHIFT+FULL> will dim all channels apart from channel 1. This is ideal for focus sessions.

Other Windows button (ZOS-3746)



A new button in the Output Window, labelled 'Other Windows' allows you to open the additional windows in ZerOS using a touchscreen.

The available windows vary by desk type.

Bug Fixes

ZerOS 7.0 includes a large number of bug fixes and other functionality changes. We recommend all users upgrade.

Summary of New Features

ZOS-2835	Colour Filter (Gel) tab for Colour Palettes window
ZOS-2881	Fixture Levels view of cue lists
ZOS-3289	Rearranged Record options window
ZOS-3309	MFF window improvements for ORB XF
ZOS-3313	'No Effect' auto-palette
ZOS-3316	Improved the clarity of the USB Install Maker
ZOS-3318	New Skin
ZOS-3458	Export CSV file options
ZOS-3459	Page Lock
ZOS-3460	Macro Speed Option
ZOS-3461	Page n ENTER syntax ORB series
ZOS-3582	Macros now store Commands as well as Keys
ZOS-3205	Time Override Indicator on XF
ZOS-3294	Improve Default Settings
ZOS-3621	Added online help to all desk types
ZOS-3646	Added Fixture Library Release 23
ZOS-3659	Fixture Window for ORB series
ZOS-3676	Programming View for ORB series
ZOS-3680	Screen MFK for Leap Frog range
ZOS-3691	Cue Stacks on ORB XF now have improved syntax
ZOS-3734	Output Window now has a 'Show Fixtures Section' toggle
ZOS-3743	Leap Frog now shows 'DMX' softkey, and supports REM DIM in syntax
ZOS-3746	Added 'Other Windows' function to Output Window

Bug Fixes

ZOS-1310	Move On Dark option to stop looping to cue 1 at the end of the stack
ZOS-1422	Fixtures with no intensity channel now do not show 0% on MFKs
ZOS-1752	Auto triggered cues now take a wait time not a timecode reference
ZOS-1852	Program Window sometimes displayed wrongly in smaller window versions
ZOS-2673	UDK Page Number didn't redraw correctly when the page changed
ZOS-2799	ORBs no longer show unprogrammed memories in the cue stack windows
ZOS-2831	Improved the legibility of selected fixtures in the Output Window
ZOS-3156	'Normal Wheel Mode' menu displays under 'Shifted Wheel Mode' menu
ZOS-3170	Effects Window sometimes lose alignment when scrolling
ZOS-3190	When viewing 'Panel' on a monitor, page numbers continuously changed
ZOS-3191	Logitech Wireless Mouse / Keyboard no longer worked
ZOS-3208	Group Submasters weren't stored correctly
ZOS-3209	Intensity wheel on ORBs is now always a relative adjustment
ZOS-3215	Views and Macros were lost when show was saved
ZOS-3226	Opening the Program Window sometimes caused the desk to crash
ZOS-3227	Backspace MFK didn't work correctly in some popup windows
ZOS-3233	Edit of submaster fade times did not always work
ZOS-3237	Leaving BLIND mode sometimes caused a flash on stage
ZOS-3239	Using + and minus keys sometimes caused times not to store correctly
ZOS-3275	MFF Window didn't always draw correctly
ZOS-3276	Merging Submasters or UDKs sometimes lost timings
ZOS-3278	When SETUP is held, UDKs and Sub flash buttons caused flashes on stage
ZOS-3288	Scrollbars appeared when changing channel format in the Output Window
ZOS-3293	Submaster & UDK Values didn't get correctly remembered on reboot
ZOS-3308	Naming a submaster on ORB XF sometimes didn't work
ZOS-3315	Syntax keys didn't always reset when backspacing a command on ORBs
ZOS-3329	Using a Time Submaster sometimes caused a flash
ZOS-3354	Copying or moving a cue number >1000 caused a crash
ZOS-3452	Changing Sub page on ORB XF also changed UDK page
ZOS-3560	LTP Trigger Level was ignored when Setup window is opened
ZOS-3602	Desk crashes happened when the remote is connected
ZOS-3607	Cue 0 could be recorded erroneously
ZOS-3609	Fixed some spelling mistakes in popup windows
ZOS-3624	Program Window displayed incorrectly if fixtures are selected when it opens
ZOS-3634	Changes to the MFF window to improve legibility
ZOS-3656	Flashing & Latching subs in the MFF window are now shown correctly
ZOS-3663	Time Override Bar in MFF window now behaves like override control
ZOS-3664	Time Submaster in MFF window now shows time not percentage
ZOS-3670	Merging into a cue before a point cue now selects the correct cue
ZOS-3705	Previous, Next and Last with Cues selected the wrong cues
ZOS-3719	NAME {touch} interface sometimes stopped working
ZOS-3732	ORB XF Help button was not implemented
ZOS-3736	Memories screen would scroll oddly when looping to the first cue
ZOS-3737	Online Help links viewed on the iPad were not clickable
ZOS-3747	Certain syntaxes on Leap Frog were allowed in error



Release Notes (Release 6.1)

Release 6.1 of ZerOS is a bug fix software release for the ORB, ORB XF, Leap Frog 48, Leap Frog 96 and Frog 2 desks. These release notes describe the changes and bug fixes that have been implemented in the ZerOS desk software between versions 6.0 and 6.1. For convenience, version 6.0 to 4.4 release notes are included after this document.

Bug Fixes

ZOS-3170	Effects Window draws incorrectly when scrolling
ZOS-3191	Certain USB accessories no longer work
ZOS-3205	Time Override Indicator not shown on XF
ZOS-3208	Group Submasters are lost when a show is saved to USB
ZOS-3215	Views are lost when show is saved to USB
ZOS-3226	Opening the Program Window sometimes causes a crash
ZOS-3227	Backspace Button doesn't work in certain fields
ZOS-3233	Editing a submaster fade time does not always store
ZOS-3237	Channels sometimes flash when leaving of BLIND mode
ZOS-3240	Black tick on Blue background is hard to see in Effects Window
ZOS-3243	Command line sometimes rejects commands after selecting groups
ZOS-3244	Touchscreens that use eGalax touchscreen drivers do not work in 6.0.0

zerOS

Release Notes (Release 6.0)

Release 6.0 of ZerOS is a major new software release for the ORB, ORB XF, Leap Frog 48, Leap Frog 96 and Frog 2 desks. These release notes describe the changes and bug fixes that have been implemented in the ZerOS desk software between versions 5.4.0 and 6.0. For convenience, version 5.4 to 4.4 release notes are included after this document.

Soft Keyboard in Save Show Window (ZOS-2736)

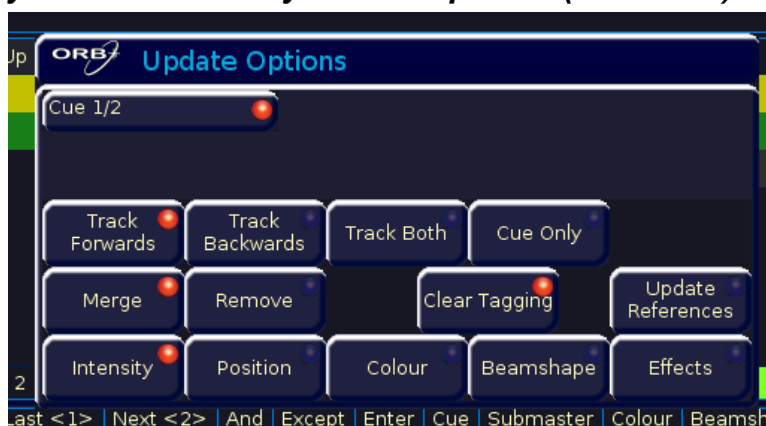
When saving a show, the on-screen popup offers a keyboard for use with touchscreens. This prevents ORB Series users having to plug in an external keyboard in order to name show files.



Update Options now automatically selects the item you have updated (ZOS-2815)

When you use the UPDATE command, ZerOS automatically selects the item which you have updated – the active cue, submaster, palette etc. This allows you to very quickly make updates, using the syntax UPDATE ENTER. You can see the item ZerOS will update by using the Update Options window on screen. To deselect that item and select another item, either use syntax or click on screen.

When using syntax, Update Options lets you define the item you want to update using the keypad in the same way as recording, eg: UPDATE CUE 2 ENTER.



Update References allows you to simultaneously update multiple sources with different information. Using this, it is possible to make changes to positions, colours, intensities, etc. By simply specifying the master source (eg the cue which is running) and enabling 'update references', ZerOS will automatically filter the data back to the relevant palettes, ensuring the whole showfile stays clean.

Delete support in syntax (ZOS-2892)

It is now possible to use the THRU key when specifying ranges to record or delete. The syntax is as follows:

RECORD CUE 1 THRU 10 ENTER

DELETE CUE 5 THRU 8 ENTER

As with any delete command, ZerOS will warn you before completing the syntax.

Back Function now has two modes (ZOS-3042)

The double pause (Back) function can now be set to one of two modes:

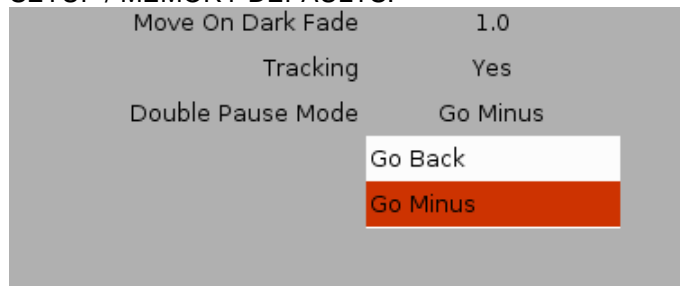
Go Minus – this will take you back to the cue before the one you are outputting numerically (eg Cue 4, Go Minus, will output Cue 3)

Go Back – this will take you back in history, to the last cue you were outputting.

In normal operation, the behaviour of these two is not massively different – the major difference happens when you jump around the cue stack, for example during a technical rehearsal. In this situation, being able to jump back up the cue stack (Go Minus) may be preferable.

To set the double pause mode, open the Stack Setup window (STACK n SETUP) and select the option you require.

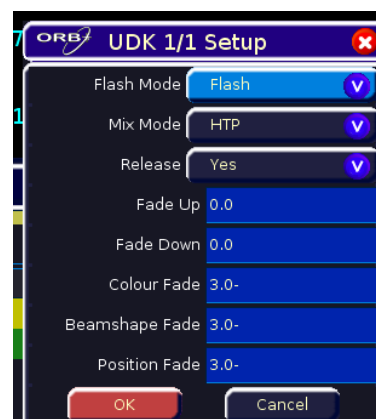
On Leap Frog, this option is found in SETUP / DESK SETUP / MEMORY DEFAULTS:



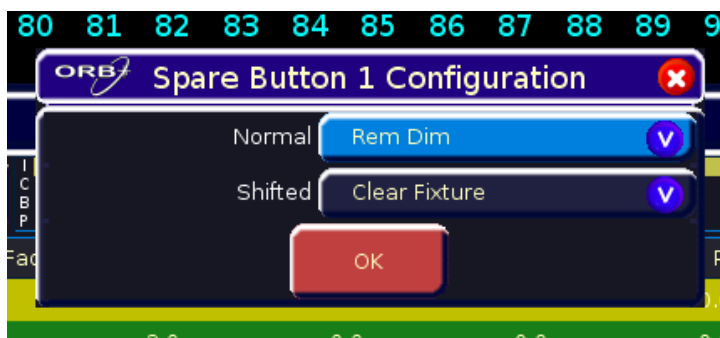
UDK Options Window now let's you set fade times (ZOS-3055)

When setting up a UDK, it is now possible to set the fade times for the UDK using the Setup window – hold down SETUP and press the UDK, then select the on-screen options.

Fade times follow the same rules as the Memories and Submasters windows, with a + indicating complex data, and a – indicating no programmed data.



ORB “Spare Button” is now assignable to syntax functions (ZOS-3070)



The spare button, located in the functions syntax keypad of ORB Series consoles, can now be assigned to two separate syntax functions of your choosing. These functions are defined by holding SETUP and pressing the spare button. The available functions are listed under two sections – normal mode and shifted mode. The dropdown box is used to select the function you wish to use, for example Rem Dim.

Once defined, these functions will happen when you press the spare button, or when you hold SHIFT and press the spare button.

Added the ability to release a channel from the program window without clearing the whole program window (ZOS-3071)

Sometimes it is desirable to release a fixture from the program window without clearing the whole program window. A new syntax key 'Clear Fixture' is available on ORB Series consoles which allows you to clear an individual (or group) of fixtures from the program window. The syntax is:

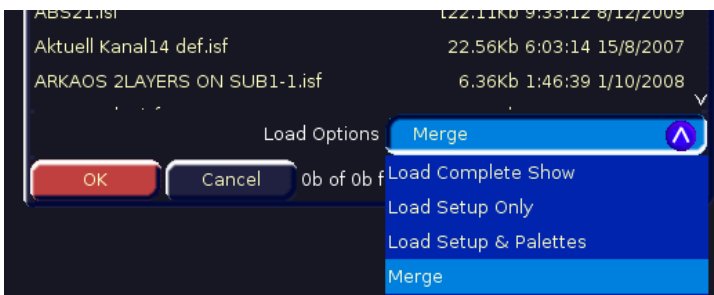
1 {Clear Fixture}
Group 5 {Clear Fixture}

Cut Forward/Back now doesn't activate auto-follow ons (ZOS-3072)

When you cut into a cue, using the SHIFT+GO, or SHIFT+PAUSE (for cut back), ZerOS will no longer run auto-follow on cues. This behaviour allows you to run into, and modify, specific states within an automatic following sequence, without fear of follow triggers happening before your updates are complete. Auto follow ons are still run for zero fade time cues, or when the override fader / pot is set to full.

Added the ability to Merge show files (ZOS-3095)

Prior to ZerOS 6.0, there was an internal maximum limit of 2000 cues on any ZerOS console. In ZerOS 6.0, this has been increased to 10,000 cues. As a result of this limit, some productions ran out of 'cue' space within their show file, meaning that the recommended solution from Zero 88 was to produce two show files – one for the first half of the show, and one for the second. In ZerOS 6.0, a dropdown option has been added to the Load Show window to allow you to merge two show files together. This option will append the additional cue data, palettes, groups, etc, after the first range of cue numbers.



Added Windows Remote Monitor Support (ZOS-3115)

The Windows Remote Monitor is an application found on the CD supplied with the desk. It can also be downloaded from the Zero 88 website. Once installed, the application will startup and detect any ORB series desks connected to the PC

Select the desk you want to connect to, and then select the mode from the dropdown box. There are two modes for the Windows Remote Monitor – 'Monitor' and 'Handheld'. In Monitor mode, you can emulate any of the 5 desktops, plus an emulation of the front panel of the desk to allow you to enter syntax.

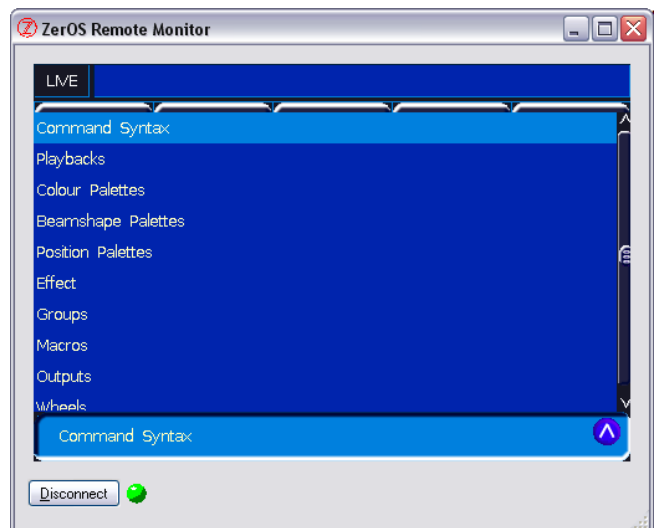
In Handheld mode, you get the same screens as the iPhone / Windows Mobile remote.
Select the desk you wish to connect to, and the mode you wish to connect in, and press the Connect button.

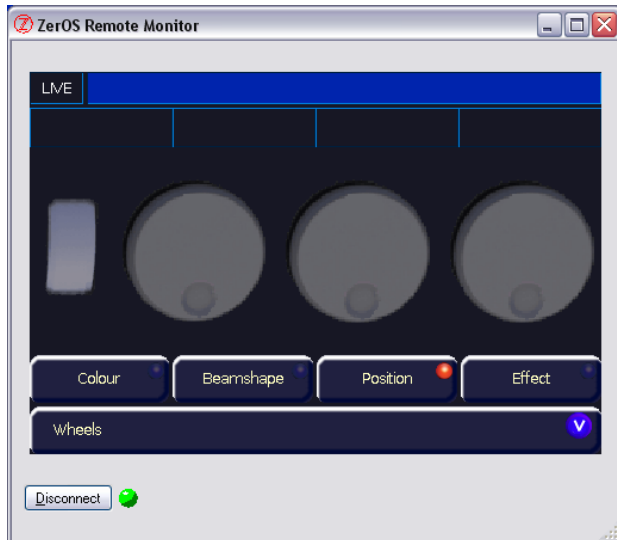
Handheld Mode



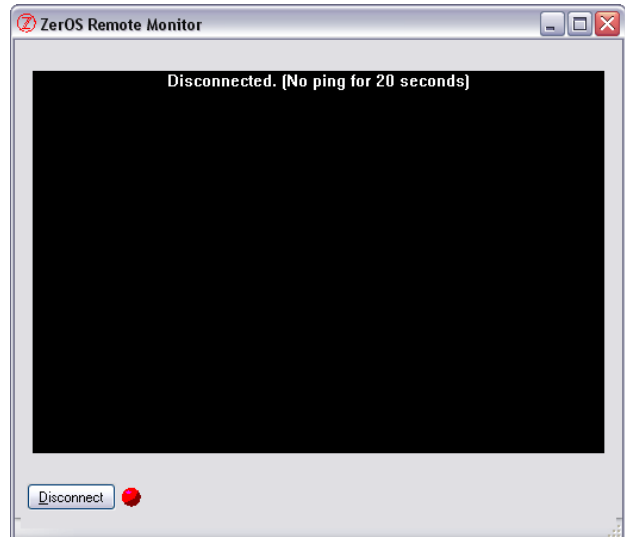
The dropdown box at the bottom of the window allows you to select a different screen of the remote.

There are various different options including the Palettes windows, Output Window and Wheels view. Each view has the dropdown box at the bottom to select a new view.





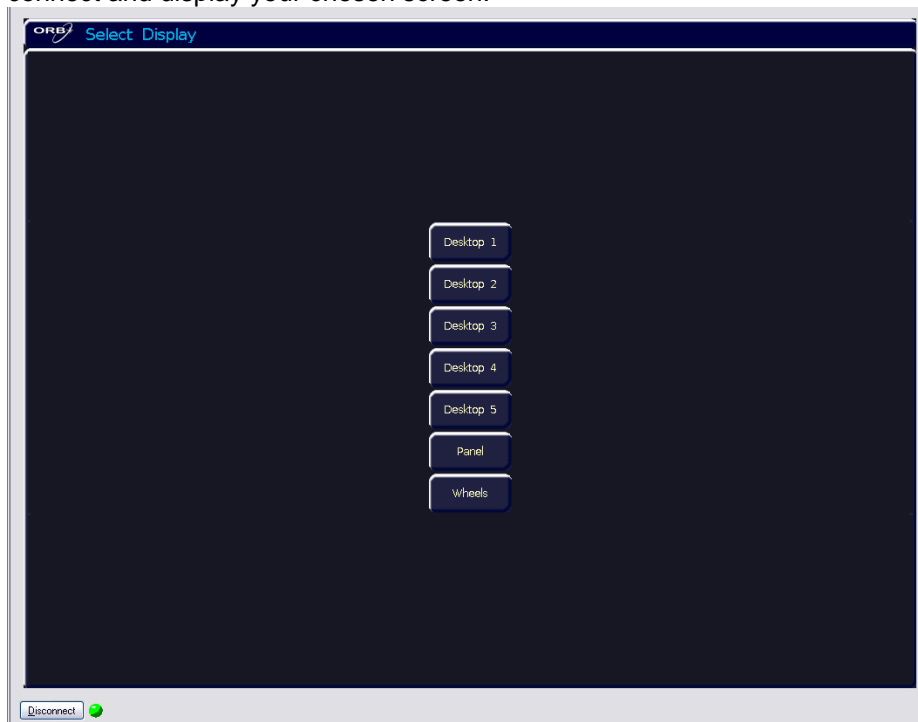
The coloured LED at the bottom of the window indicates the connection status – should the connection fail for whatever reason, this will first turn yellow and then red. After 20 seconds, the screen will change to show that the connection has failed:

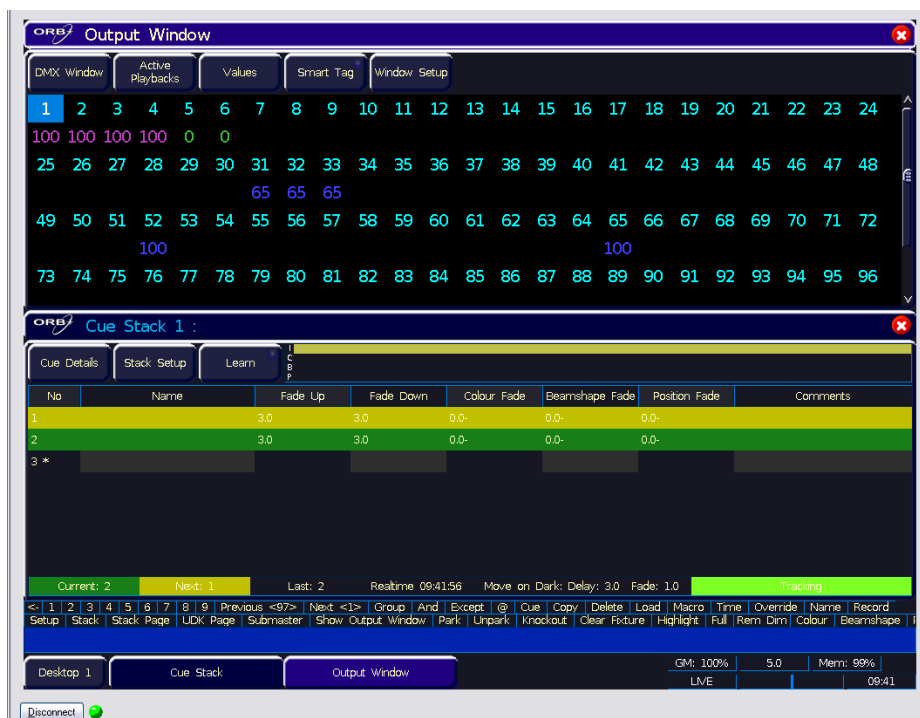


In this situation, Disconnect the remote by pressing Disconnect and then try connecting again.

Monitor Mode

When you connect using Monitor mode, the desk first asks you which Desktop you would like to view. There are 7 choices – Desktop 1 to 5, Panel and Wheels. After selection your choice, the desk will connect and display your chosen screen.



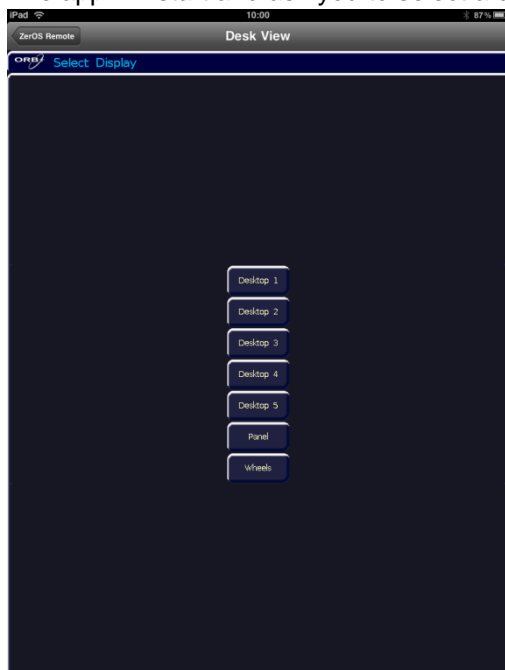


Each Desktop displays the windows contained within it, so setting the Remote Monitor to Desktop 3 will give you a third monitor on which to display windows (likewise Desktop 4 and 5). Using Desktop 1 and 2 will show the outputs from the two VGA connectors on the back of the console, assuming these have been left as Desktop 1 and 2.

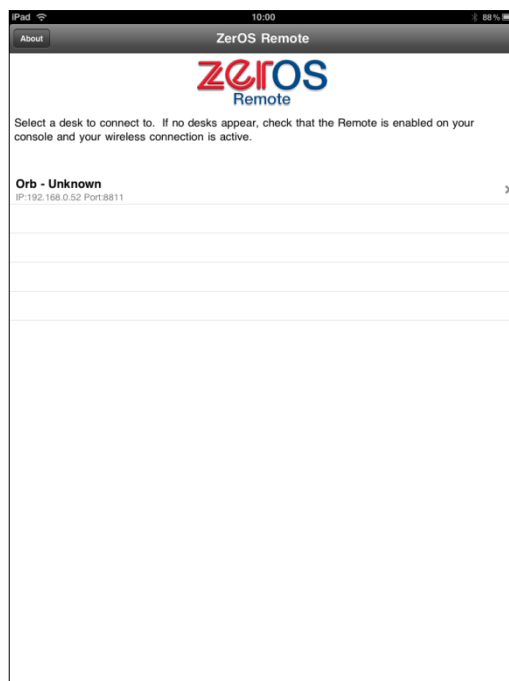
Added iPad Remote Monitor support (ZOS-3116)

The iPad app is available from the iTunes Store and can be purchased in the same way as any other iPad application. Once installed, the iPad must be connected to a wireless network, shared with the desk. Start the iPad app using the shortcut icon

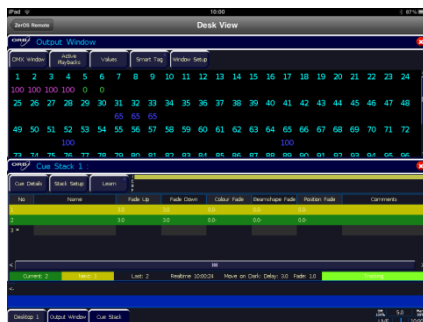
The app will start and ask you to select a desk to connect to



Select your desk and the connection will be made. Just like the Windows Remote Monitor, the iPad connects and emulates the monitor screens from the ORB. Again, you must select the Desktop you wish to view.

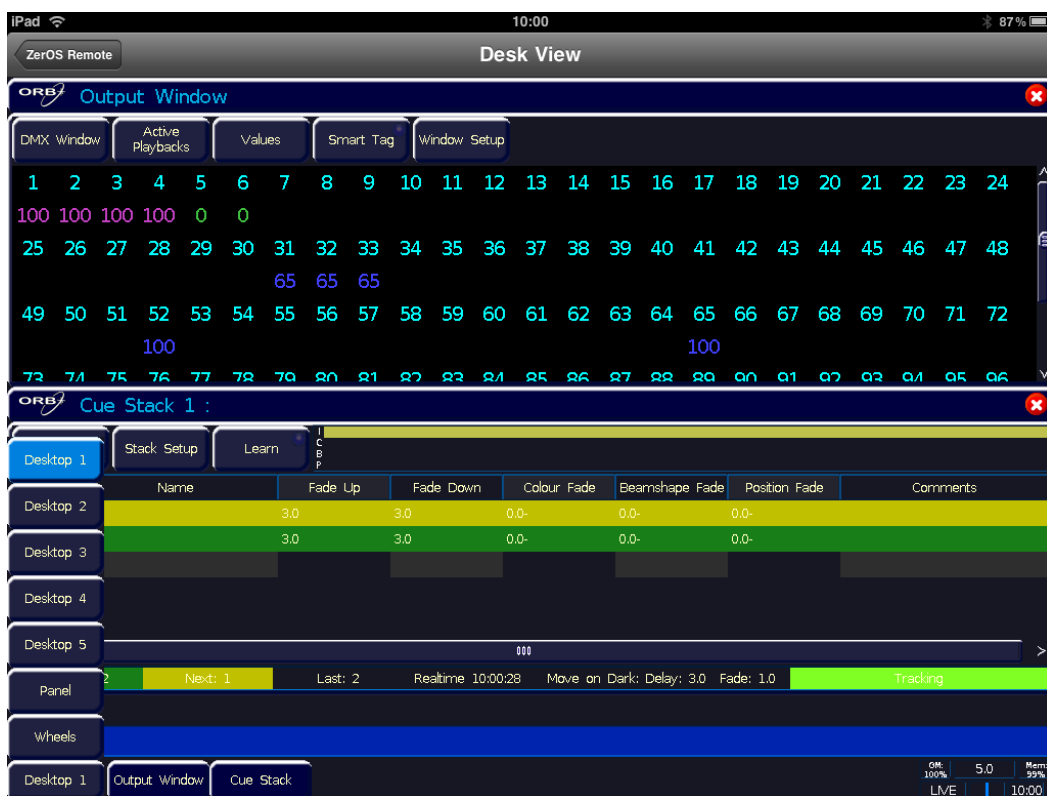


Once a desktop has been selected, the remote application will connect and display the desktop selected. Rotating the iPad will rescale the monitor window as required.



To change which desktop is being displayed, press the Desktop button in the bottom left of the screen and select a new view screen.

Once the screen is selected, the iPad will redraw the monitor screen



Holding SETUP will use the intensity wheel as a scroll wheel in the active window (ZOS-3164)

Holding the SETUP key on ORB Series desks now uses the fourth (intensity) wheel to scroll the selected monitor window. This is indicated on the LCD by the presence of the word 'SCROLL'.

Added Time Lock and Time Fader function (ZOS-444)

Time Fader

On ORB Series desks it is now possible to create a TIME fader, by using the syntax:

TIME RECORD <Submaster Flash / GO>

This time fader can be used to set the internal fade time, indicated in the bottom right of the monitor screen.

Internal fade times are used to determine the fade time used in syntaxes which do not specify another time value, for example GROUP 1 COLOUR 6 TIME ENTER will use whatever the internal fade time is to crossfade group 1 into colour 6 across the internal fade time.

Time Lock

Also added in ZerOS 6.0 is the ability to lock the internal fade time so that it is permanently used for all syntax commands.

To activate this function, on ORB & ORB XF – press the flash button under the TIME fader, which is associated with a submaster.

On Leap Frog 48 & 96 – press SHIFT and the TIME MFK.

On Frog 2 – press the flash button under the TIME UDF.

Time Lock is indicated by the monitor fade time being displayed with a coloured background:

GM: 100%	3.0	Mem: 99%
LIVE		11:00

GM: 100%	3.0	Mem: 99%
LIVE		11:00

Summary of New Features

ZOS-2736	Soft Keyboard on screen in Save Show window
ZOS-2815	Update now auto-selects the option it thinks is best
ZOS-2892	Thru is now supported in Delete and RECORD commands
ZOS-3042	Back function now has two modes - Go Back, and Go Minus
ZOS-3055	UDK options window now lets you set fade times
ZOS-3070	ORB "Spare Button" can now be assigned to syntax functions
ZOS-3071	Added the ability to release a channel from the program window without clearing the whole program window
ZOS-3072	Cut Forward/Back now doesn't activate auto-follow ons
ZOS-3095	Added the ability to Merge show files
ZOS-3115	Added Windows Remote Monitor Support
ZOS-3116	Added iPad Remote Monitor support
ZOS-3164	Holding SETUP will use the intensity wheel as a scroll wheel in the active window
ZOS-444	Added Time Lock and Time Fader function

Bug Fixes

ZOS-2950	Some Frog 2s do not store show data in 5.3.0
ZOS-2997	Blind - unprogrammed channels shouldn't track from memory 0
ZOS-3041	Connecting Windows Mobile Remote crashes the desk
ZOS-3054	Unable to select stack page greater than 20 using syntax
ZOS-3056	Attribute buttons don't trigger page changes
ZOS-3058	Rotating an iPod Touch sometimes crashes the console
ZOS-3074	Wheels should remember which attribute page they are displaying
ZOS-3075	Go-Back shows Blocked values incorrectly.
ZOS-3076	If Hide Unpatched is enabled, Next and Previous should skip unpatched channels
ZOS-3078	Clicking an ORB wheel should ignore [wheel edit] commands for a second
ZOS-3090	Draw problems on iPod Touch with iOS 4.0
ZOS-3104	Crash when deleting a Part Cue
ZOS-3105	Update Refs stops update enter from working
ZOS-3108	Crash when updating firmware from within desk software
ZOS-3114	Original Frog series show loses fade times when loaded
ZOS-3175	Dropdown boxes accessed through MFKs don't work correctly
ZOS-3176	Comments Column in Memories - Enter doesn't open popup
ZOS-2668	Battery Status is now tested on startup

Other Changes

ZOS-1721	Next Memory Is Not Programmed popup now clears with second GO press
ZOS-2174	Update now works with syntax
ZOS-3073	Memories Window - now always displays the current memory, even if the next is a large number away
ZOS-3094	Memory limits increased to 10,000 memories instead of 2,000.
ZOS-3121	New Boot Screen added
ZOS-3128	Update Linux kernel to allow support for newer Touchscreens
ZOS-3147	Improved on-screen font
ZOS-3157	Add new font to remote (iPhone) and remote monitors

zerOS

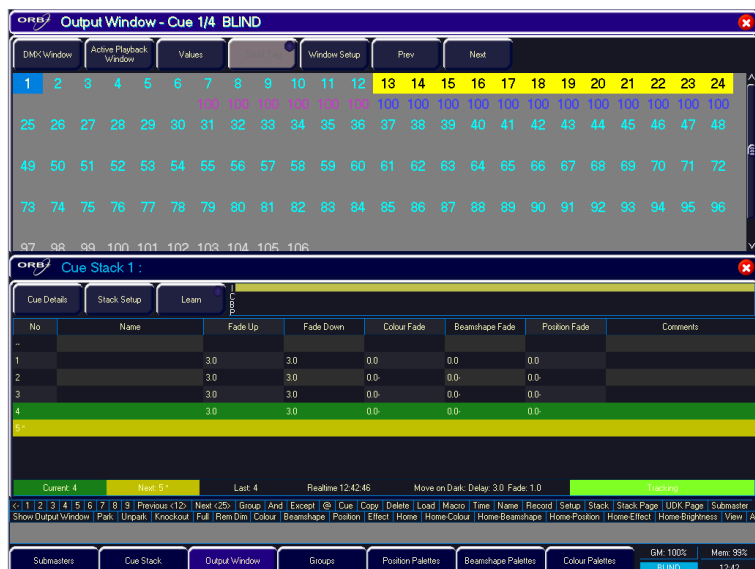
Release Notes (Release 5.4.0)

Release 5.4.0 of ZerOS is an major new software release for the ORB, Leap Frog 48, Leap Frog 96 and Frog 2 desks. These release notes describe the changes and bug fixes that have been implemented in the ZerOS desk software between versions 5.3.5 and 5.4.0. For convenience, version 5.3.5, 5.3.0, 5.2.2, 5.1, 5.0 and 4.4 release notes are included after this document.

Improved Blind Mode (ZOS-2646)

Blind Mode across all consoles has now had a significant redesign. When Blind Mode is engaged, the output window is automatically replaced with a window which shows the contents of the program window. This allows you to easily identify the channels which are programmed into the cue you are modifying, together with any tracking data associated with that cue.

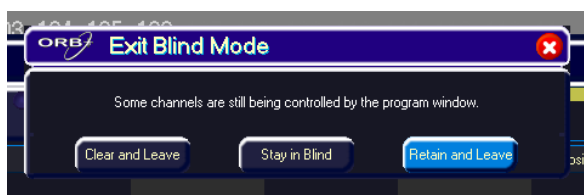
A new method has been defined for blind-editing a cue on Frog 2 and ORB – the syntax VIEW CUE n BLIND will load the cue you reference into this blind mode and enable you to modify any levels required very simply.



When in Blind Mode, any changes entered into the command line will not affect the 'live' outputs, but will instead be entered into the blind program window. To modify the cue referenced when entering blind, use UPDATE, or press CLEAR to leave blind and disregard the changes.

Using the Prev and Next buttons in the Output Window allow you to scroll to the previous and next cues in the cue stack without having to load each cue individually – this is ideal if you want to ensure you have captured all instances of a channel sneaking in (those pesky house lights?!)

Changes made in blind mode can be retained for future modification by pressing the BLIND key – a popup will appear asking if you want to retain these values, clear these values, or stay in blind. This is useful if you need to build a whole new scene whilst still modifying the scene on stage – you can flip flop between LIVE and BLIND and retain the contents of the two program windows separately.



iPhone Remote (ZOS-3020)

ZerOS 5.4.0 sees the release of the ZerOS Remote application for iPod Touch, iPhone and iPad. This application is a fully featured wireless remote for all ZerOS consoles and offers many features including manipulation of the control wheels, palettes, colour pickers, gobo images and output window.



The new application will be available for download through the Apple AppStore and iTunes – watch out for this logo:



The remote is enabled and configured in the same way as the Windows Mobile Remote is – in the SETUP / NETWORK / REMOTE tab. A password can be added to the desk for security, although we also recommend the use of a secured wireless network when using the remote, particularly if you intend to leave the network active during show periods.

Tracking Backup (ZOS-2871)

It is now possible to connect ZerOS consoles together, or a console and an offline editor, to create a master and backup system. This tracking backup option is ideal for show-critical scenarios where a backup solution must be provided. For this purpose Phantom ZerOS can be considered to be a fully functioning console, with the presence of a ZerOS Unlock Dongle.

The two consoles are connected together via an Ethernet network. Each console is assigned an IP address and a master or backup status. If the console is set to be the backup device, it will go into a suspended status where you will not be able to operate the controls on the front panel, until such a time as the master console disconnects or fails in any way. At this time, the show file will have automatically transferred to the backup console and the backup console will take over control of the show.

ZerOS Unlock Dongle Support (ZOS-2969)

Working alongside the new Tracking Backup functionality (ZOS-2871), the ZerOS Unlock Dongle is a small USB dongle which enables Phantom ZerOS (the ZerOS offline editor) to output Ethernet based DMX signals (Art-Net and sACN). This dongle is available for purchase from all Zero 88 dealers.

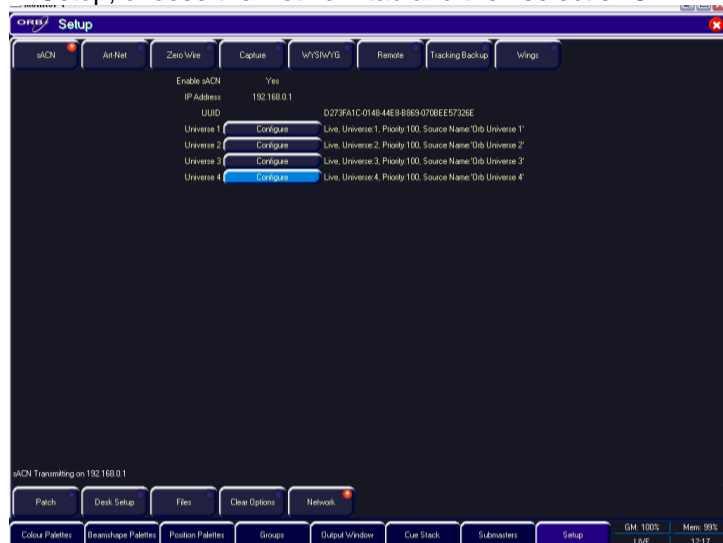
To utilise the dongle, simply plug it into a spare USB port on your PC (a port which is located in a hub should also be sufficient) and start Phantom ZerOS. The networking protocols which are enabled will then be activated on the outputs.

It is worth mentioning that the Art-Net output requires the computers IP address to be set in accordance with the Art-Net specification (that is, it must start with either a 2.x.x.x or a 10.x.x.x and have a subnet mask of 255.0.0.0)

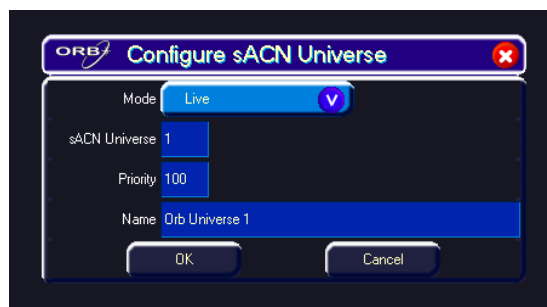
sACN (ANSI-E1.31) support (ZOS-451)

All ZerOS consoles running version 5.4.0 or higher can now output the new Streaming ACN standard for DMX over Ethernet transport. This standard is approved by ANSI and ESTA as the new DMX over Ethernet standard and allows ZerOS to communicate with a multitude of sACN enabled devices already out there.

In Setup, choose the Network tab and then select sACN:



Each DMX universe is offered as a line item with configuration options for each universe. By default all universes are disabled, so enable only the universes you require in order to reduce the network overhead.



Each sACN universe can be either “Live” or “Preview” output – the Preview output option although configurable is not implemented in ZerOS as of version 5.4.0.

sACN allocates a universe number to each DMX universe, which must be set the same on the transmitting device (ZerOS console) and the receiving device (the DMX output box, or fixture, etc). In addition, each universe can be defined a Priority level (0-200) – sACN receptive devices will automatically listen for the highest priority number received and respond to that signal. In this way, multiple consoles can be running on a network at the same time and can automatically take over from one another – a function used in our tracking backup software.

Each sACN universe can also have a unique name associated with it, which can be entered from a USB keyboard. This functionality allows you to identify which universe is coming from which console on a larger networked system.

LightFactory (Enttec) Playback Wing Support (ZOS-2952)

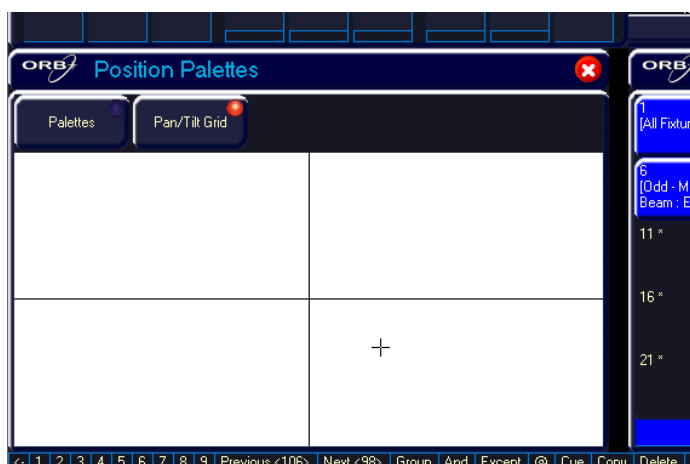
It is now possible to use the LightFactory Playback Wing as an additional fader/playback wing for the ZerOS consoles. Each key and fader can be assigned individually to allow a truly configurable accessory, and multiple wings can be supported simultaneously.

In SETUP / NETWORK / WINGS, select and assign IP addresses as required. Once the desk is at the correct IP address, you should see the wing appear in a list below it.

Press the Configure key and a popup window will appear allowing you to assign each of the keys and faders on the wing as required. These settings will be stored as part of your show file, so you can reuse the wing.

Pan/Tilt Grid option in Position Palettes window (ZOS-3024)

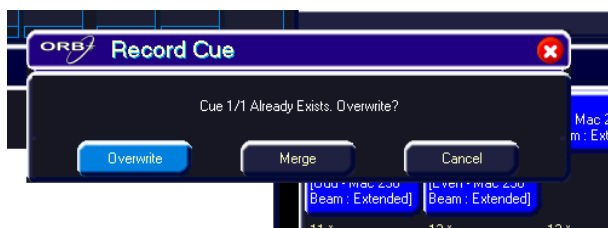
The Position Palettes window now offers an option to view Pan and Tilt as a grid format, and to click or touch within that grid to move the fixtures.



This functionality is also available from the iPhone remote.

Overwrite Popups now offer “Merge” (ZOS-2986)

When overwriting an item, such as a memory, submaster, palette, group or UDK, ZerOS now offers the option to merge data instead of simply overwriting it. Merging will add the additional data from the Program Window into the item, combining the two sets of data. This is particularly useful when creating position palettes, where you can now work on small groups of fixtures one at a time.



Dimmer Test Mode for ORB (ZOS-2840)

A {DMX} softkey has been added to the command line in both main desk mode and SETUP mode, which allows you to test DMX output channels directly by selecting the DMX address and the level required. For example: {DMX} 94 @ 127 ENTER – will set channel 94 on the DMX outputs to 50%.

When using the {DMX} softkey, nothing will be stored – this is purely a live test mode useful for checking a channel before patching it. When the Program Window is cleared, using the CLEAR key, the tested channels will also revert back to their old level.

Bug Fixes

ZOS-2742	ORB should use correct Artnet OEM code
ZOS-2981	Crash when exiting Help using SETUP key
ZOS-2980	Imported showfiles (From Frog 1) didn't load HTP channels
ZOS-2983	Monitor 2 output doesn't work on some monitors
ZOS-2942	Submasters in Non Tracking Mode get complex times
ZOS-2943	CUE n DELETE did not work, unless a stack was specified
ZOS-2975	Select Operating Mode - window is not big enough for text
ZOS-2976	Position attributes are sometimes missing from the wheels

Other Changes

ZOS-2991	Make the Program window look like the Output window
ZOS-2189	Update sources don't always show current memory
ZOS-2871	Added Tracking Backup Functionality
ZOS-3017	Add additional functionality to the PDA remote
ZOS-3020	Add support for iPhone using PDA remote
ZOS-3024	Add Pan/Tilt Grid in Position
ZOS-2990	When a cue is loaded into the program window, add Next/Previous buttons to the Output window
ZOS-451	Add support for sACN (ANSI E1.31)
ZOS-2646	Improvements to Blind Mode
ZOS-2989	Make the Preview window look like the Output window
ZOS-2952	Add support Lightfactory (Enttec) Playback Wing
ZOS-2840	Add the ability to directly access DMX outputs whilst patching (Dimmer Test mode)
ZOS-2930	Added the ability to delete a fixture from within the patch screen
ZOS-2798	Overwrite popup should allow Merge

ZerOS – Release Notes (Release 5.3.5)

Release 5.3.5 of ZerOS is an interim release of software for the ORB, Leap Frog 48, Leap Frog 96 and Frog 2 desks. These release notes describe the bug fixes that have been implemented in the ZerOS desk software between versions 5.3.0 and 5.3.5. For convenience, version 5.3.0, 5.2.2, 5.1, 5.0 and 4.4 release notes are included after this document.

Bug Fixes

ZOS-2949	Submasters sometimes behave LTP instead of HTP on Leap Frog 48 or 96
ZOS-2965	Fade times sometimes corrupt when copying submasters
ZOS-2940	Position wheel groups don't appear if the second finger is not defined
ZOS-2927	Older Frog 2 Hardware hangs on entering Add Fixtures
ZOS-2947	Tracking / Non Tracking mode setting not stored correctly
ZOS-2791	Output Window colour coding doesn't follow specification correctly
ZOS-2917	Leap Frog 48/96 – Copying Submasters now allows / entry for copying across pages
ZOS-2806	Submaster flash modes don't all behave correctly on ORB

ZerOS – Release Notes (Release 5.3.0)

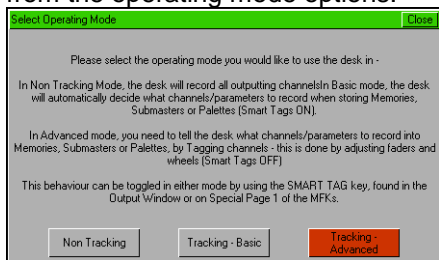
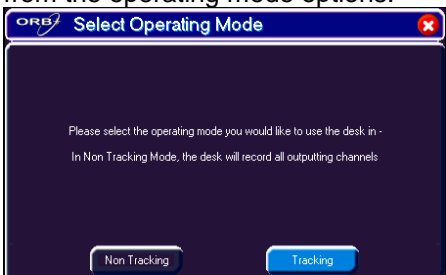
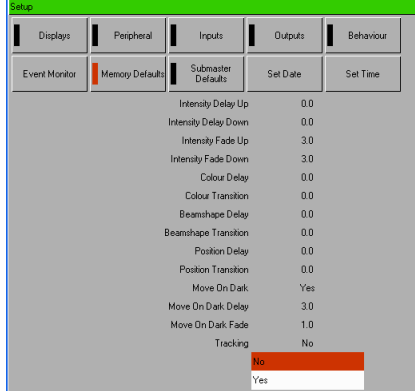

Release 5.3.0 of ZerOS is an interim release of software for the ORB, Leap Frog 48, Leap Frog 96 and Frog 2 desks. These release notes describe the new or modified functionality and bug fixes that have been implemented in the ZerOS desk software between versions 5.2.2 and 5.3. For convenience, version 5.2.2, 5.1, 5.0 and 4.4 release notes are included after this document.

Non Tracking Mode for all desks (ZOS-2841)

All ZerOS desks have traditionally behaved in a tracking manner, which means that changes in cues in a cue stack *track* through to subsequent cues until another instruction is given to those channels.

As of version 5.3.0 of software, an option is provided to disable tracking behaviour for cue stacks. This means that the contents of each memory is the whole stage look as you would expect to see it. When tracking is disabled, the scene you are looking at on stage is what will be stored into each memory/cue.

To activate Non Tracking mode:

Leap Frog 48 & 96	Frog 2 & ORB
<p>On first boot, you can select Non Tracking mode from the operating mode options:</p> 	<p>On first boot, you can select Non Tracking mode from the operating mode options:</p> 
<p>After first boot, the option can be found in SETUP / DESK SETUP / MEMORY DEFAULTS:</p> 	<p>After first boot, the option can be found in SETUP / DESK SETUP / BEHAVIOUR:</p> 

The Tracking / Non Tracking mode is indicated in the bottom right of the Memories / Cue Stack window.

When Non Tracking is enabled, the following functions are disabled as they become irrelevant:

- Track / Cue Only buttons on ORB front panel
- Tracking Options in Record Options and Update Options
- Merge/Remove options in Record Options & Update Options
- Smart Tag (this is forced on)

Part Cues on ORB (ZOS-2828)

The ORB now supports Part Cues, which allow you to separate groups of channels into different sections, each section having its own name and timing parameters. This allows for easy separation of parts of a crossfade, for clarity, and can be used to apply different timings to a channel or group of channels. Upto 20 parts can be assigned to each memory, if required. When in Tracking mode, the contents of the program window are recorded into a part (unless Smart Tags are enabled). When in Non-Tracking mode or when Smart Tags are enabled, the selected channels are recorded into the part you are recording. If no channels are selected, the outputting state is recorded into the part you specify.

Part cues are stored using the syntax:

RECORD CUE x PART y ENTER.

The standard syntax for naming, timing, etc, can be followed after the part has been specified, eg:

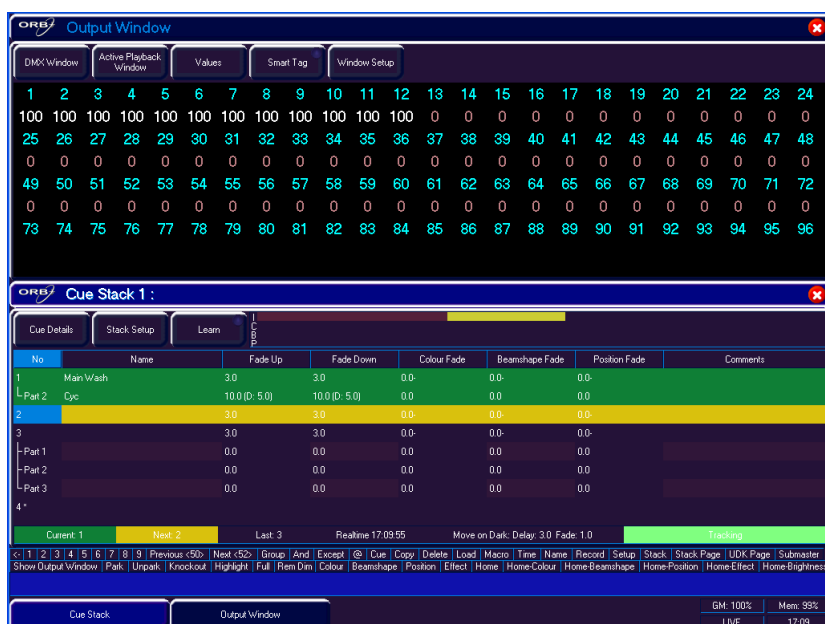
RECORD CUE 2 PART 4 TIME 3/5 COLOUR 10 POSITION 10 BEAM 0 NAME {Cyc} ENTER

The times for the part cue are set using the syntax:

CUE x PART y TIME z ENTER

All standard timing syntax can be used after the TIME command.

Note that Part 0 is a special part in ZerOS desks which contains all channels not specifically stored into a part. This part can be altered using the standard cue adjustment syntaxes (CUE x TIME y ENTER will set the time for Part 0 only).



Should you have Parts in a cue which need removing, a new Cleanup menu has been added to the Cue Setup Window:



From within this menu you can choose to Combine Parts, which will remove any additional parts and copy their channel data into the original cue (Part 0).

A “Remove Complex Times” button has also been added to this window to allow you to quickly clean up any complex timings from a cue which may have been added erroneously or are no longer required. The presence of Complex times is indicated in the Cue Stack window with a + in the fade time fields.

Views can now be stored onto UDKs on Frog 2 and ORB (ZOS-2866)

A new syntax has been added to add the ability to recording Views onto UDKs on Frog 2 and ORB:

VIEW n RECORD <UDK>

Pressing the UDK will then alter the view.

We have also increased the number of user definable views on ORB to 999, giving more flexibility when storing your own views.

Modifications

ZOS-2776	Change order of description and number in Patch screens
ZOS-2865	Increase number of user views to 999 on ORB

Bug Fixes

ZOS-2926	Record Merge loses fade times on cues on ORB and Frog 2
ZOS-2911	Update Cue Only with Smart Tag enabled adds complex times to cues
ZOS-2888	Greyed out buttons are too bright in ORB skin
ZOS-2908	Update loses fade times on cues on ORB and Frog 2
ZOS-2823	Cancelling an UPDATE causes tag states to be forgotten
ZOS-2909	Bringing windows up on Frog 2 doesn't bring them to focus
ZOS-2937	DMX In causes multiple 'Fader Movement' messages when used with ETC Express 48
ZOS-2882	Deleting a palette crashes the desk
ZOS-2829	Record Options - General slowdown after prolonged use
ZOS-2937	DMX In causes multiple 'Fader Movement' messages

ZerOS – Release Notes (Release 5.2.2)

Release 5.2.2 of ZerOS is an interim release of software for the ORB, Leap Frog 48, Leap Frog 96 and Frog 2 desks. These release notes describe the new or modified functionality and bug fixes that have been implemented in the ZerOS desk software between versions 5.1 and 5.2.2. For convenience, version 5.1, 5.0 and 4.4 release notes are included after this document.

Showfile Compatability Notice

Due to the changes made in version 5.2, showfiles created in version 5.2 onwards of desk software will *not* load correctly into desks running software version 5.1 or below. Please ensure that the desk you are loading the showfile into is running the latest software version before loading a showfile. Showfiles created on version 5.1 or below will load into desks running 5.2, but once resaved will then be upgraded and unable to roll back. Please remember to upgrade your installation of Phantom ZerOS at the same time as the main desk software, to ensure maximum compatibility of show files.

Slave Firmware Upgrade

The firmware in slave processors has been upgraded – this will require a firmware upgrade, which the desk will prompt for on boot up. Do not power the desk off during this update, as this could render the hardware unusable.

Playback A/B mode for Cue Stacks (ZOS-2233)

It is now possible to use the Master Playbacks on ORB as a “Playback A/B” crossfade pair, where each fader is associated with a cue and the movement of the pair of faders causes the transition from cue to cue.

In the Cue Stack Setup window, select “Playback A/B – Dimmer” as the “Master Fader” mode.

Once Playback A/B – Dimmer mode has been activated, additional options for Brightness and Attributes using fade times appear. These options allow you to force the faders to use the programmed fade time as the minimum time when moving the faders.



Stack 1- A/B - Dimmer	
Cue 1()	Cue 1()
35%	61%
3.0	3.0

Once Playback A/B mode is activated and the stack is active, the main LCD will show which memory is associated with each fader and the level and fade time of that memory.

Fade Time Improvements for Frog 2 and ORB (ZOS-2790)

Previously in Frog 2 and ORB software, Fade Times were only stored in a per-channel basis – internally on the desk there was no concept of a “cue” time. By setting all channels on the cue to the same timing, you could establish a cue timing.

This led to various confusions when adding new channels into a cue, updating cues, etc.

ZerOS 5.2.0 introduces separate timing markers for cues and channels. This means that each cue can have its own timing, which is inherited by the channels stored into that cue. Any channels with specific timing entered will ignore the cue timing and perform the fades using their own timing.

The user-interface for this timing has minimal changes – the major difference being that the fade time of a channel can now be tagged separately to that of the channel itself.

Channel level fade times can be tagged and set using the syntax:

{channel number} TIME {attributes} {fade time} ENTER

Eg:

1 thru 6 TIME 5 ENTER – sets all fade times of channels 1,2,3,4,5 and 6 to 5 seconds

16 TIME COLOUR 12 ENTER – sets the colour attributes of fixture 16 to 12 seconds

GROUP 32 TIME BEAMSHAPE DELAY 4 ENTER – sets a delay time of 4 seconds on the beamshape of group 32.

Syntax has been added on ORB to change the monitor view between fade and delay times – VIEW {VALUES}, VIEW {FADE}, VIEW {DELAY} are now options of the VIEW command syntax.

When a cue or submaster contain channel level fade times, their on-screen fade time will display a “+” to indicate the channel timings are present.

Desk Setup / Defaults changes on ORB & Frog 2 (ZOS-2848)

On ORB and Frog 2 it is now possible to set individual default fade times for Cues, Submasters (UDFs), UDKs and Channels, in the new improved “Defaults” section of Desk Setup.

The interface also allows for configuring the default behaviour of each cue stack, submaster and UDK.



Modifications

ZOS-2722	Front panel controls become unresponsive when outputting 4 universes of constantly changing data
ZOS-2790	Fade Times – Improvements for ORB and Frog 2
ZOS-2848	Desk Setup – Defaults improvements on ORB and Frog 2
ZOS-2233	Playback A/B mode for Master Playbacks on ORB

Bug Fixes

ZOS-2767	http://uhweb/gemini/issue/ViewIssue.aspx?id=2767 Groups do not function in ZerOS 5.1 on Leap Frog 48s and 96s
ZOS-2739	Macros do not function in ZerOS 5.1 on Leap Frog 48s and 96s
ZOS-2747	http://uhweb/gemini/issue/ViewIssue.aspx?id=2747 Patched fixtures lose parameters from their wheel groups if no wheel groups defined
ZOS-2844	USB Install Creator – problems when writing MBR
ZOS-2751	Fade/Delay wheels on don't work properly. Also applies to Speed wheel in Chases.
ZOS-2748	http://uhweb/gemini/issue/ViewIssue.aspx?id=2748 Override control does not work in ZerOS 5.1 on Leap Frog 48s and 96s
ZOS-2707	Double Pause (Stop Back) doesn't work on Master Playback on ORB
ZOS-2876	Fade times don't get stored on reboot / reload of show file
ZOS-2875	GO Button doesn't function after a reboot

ZerOS – Release Notes (Release 5.1)

Release 5.1 of ZerOS is a bug fix release for the ORB, Leap Frog 48, Leap Frog 96 and Frog 2 desks. These release notes describe the new or modified functionality and bug fixes that have been implemented in the ZerOS desk software between versions 5.0 and 5.1. For convenience, version 5.0 and 4.4 release notes are included after this document.

New Features

ZOS-2727	Change default skin for ORB to "ORB" not "ORB Classic"
ZOS-2657	Output Window - ability to set channel width in Window Setup
ZOS-2694	ORB Lock functions implemented

Modifications

ZOS-2643	Change display of "Delay:" in Memories Screen / Cue Stack Window to "D:"
ZOS-2647	STEP field removed on ORB in Cue Stack Window
ZOS-2649	Comments Column on ORB Cue Stack Window has been made narrower
ZOS-2641	"Mode" information is now shown in Patch screen next to fixture name
ZOS-2613	Preview Window now follows "Window Setup" from Output Window
ZOS-2651	On ORB, the Cue Stack Window now shows Colour, Beamshape and Position fade times at once
ZOS-2610	Preview Window – background is now coloured grey to differentiate it from the Output Window

Bug Fixes

ZOS-2730	Auto Macros on Leap 48/96 do not function.
ZOS-2728	Frog 2 - Playback Masters & UDFs tied together
ZOS-2731	Page Down on submasters is broken on Leap Frog 48 & 96

ZerOS – Release Notes (Release 5.0)

New Skin Option (ZOS-2709)

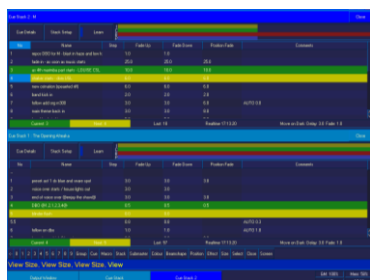
To coincide with the launch of the ORB console, ZerOS now supports a new 'ORB' colour scheme, which features curved edges to buttons, graphical close and help buttons, together with improved contrast in the colour scheme.

This skin can be selected in the Desk Setup / Displays area of SETUP, under "Colour Scheme".



Fixture Images, Gobo Images & Colour Previews (ZOS-2526)

Along with a new skin, ZerOS now features Gobo Image display in the palette windows, Colour preview display in the palette windows and Fixture Image display in the patching screens. This functionality requires the latest fixture library version, which is included within this version of software. Older show files loaded into the desk may not show the images as their patch won't include this data.



Multiple Cue Stack Windows (ZOS-1677)

On Frog 2 (and ORB) it is now possible to open multiple instances of the Cue Stack window, by using the Syntax VIEW STACK n ENTER. These extra cue stack windows are locked to only show the specified cue stack permanently so are ideal for shows using multiple cue stacks.

LCD Font Size Option (ZOS-2516)

It is now possible to alter the font size on the LCD displays of the Leap Frog 48 and Leap Frog 96 – an option has been added to SETUP / DESK SETUP / DISPLAYS, under "LCD Font Size" – the options are "Small" or "Large".

Scrollbar Arrow Buttons (ZOS-517)

On-screen scroll bars now show clickable arrows at the top and bottom of the bar, to allow you to move the scrollbar in increments. This behaviour mimics the on-screen scroll bars found on a normal Windows PC.

Help Button Onscreen (ZOS-2582)

Leap Frog 48 and Leap Frog 96 now support an on-screen "Help" button next to the "Close" button in the top right of each window. This allows you to temporarily pop up on the online help for that window.

@. Syntax (ZOS-2677)

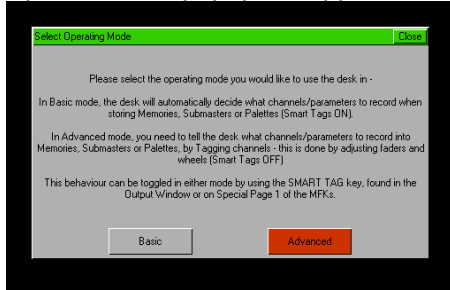
The syntax @. has been added to Frog 2 as a quick way of setting a 0% intensity, to match the syntax @FULL or @@ for setting 100% intensity. When using @. you do not need to press ENTER to terminate the syntax command.

Basic & Advanced startup modes (ZOS-2688)

On Leap Frog 48 and Leap Frog 96 it is now possible to define the operating mode on startup – Basic or Advanced. In Basic mode, SMART TAGS is enabled by default. In Advanced Mode, SMART TAGS is

disabled by default. The Smart Tags setting can still be accessed in Special Page 1 as per previous releases. To access the startup mode setting, perform a FULL RESET by going into SETUP, CLEAR OPTIONS, then hold down SHIFT and press RESET DESK.

Upon restart a popup will appear asking you to select the operating mode:



Select the mode you require and the desk will start up as normal, with Smart Tags enabled or disabled.

The FULL RESET option is ideal for hire companies to enable their users to select the operating mode they are most comfortable with upon startup.

Bug Fixes

SYNTAX	ZOS-2711	VIEW CUE 1 *wheel movement* gives error
UDF/UDK	ZOS-2672	Non existing items can be assigned to a UDK
GENERAL	ZOS-2698	1 thru 15 wheel
MONITOR SCREENS	ZOS-2702	Colour picker causes continuous flickering if not in top left
REMOTE	ZOS-2681	Remote - Popup Windows too small
STARTUP	ZOS-2690	Desk will sometimes not boot after installing
DESK SETUP	ZOS-1292	Setting Screen Timeout Values
DESK SETUP	ZOS-764	Desk Setup - Timeout problems
EFFECTS	ZOS-2411	Copied Effects don't start
GENERAL	ZOS-1085	Knockout still applies in Blind Mode.
GENERAL	ZOS-1073	Highlight should not show the lights if BLIND is selected.
GENERAL	ZOS-2656	@ Cue syntax - problems
GROUPS	ZOS-2316	Recording Group via click doesn't work
MEMORIES	ZOS-2348	Saving a time to a memory - max number
PLAYBACK	ZOS-2630	Stack Directory shows "programmed" wrongly
SUBMASTERS	ZOS-2568	Oddness Updating Submasters
MEMORIES	ZOS-2612	Syntax VIEW CUE 1 Invalid
MONITOR SCREENS	ZOS-1627	Setup Stack Window - Display Problems
MONITOR SCREENS	ZOS-2599	OK & Cancel Buttons - Stack Setup window
MEMORIES	ZOS-2420	Low Memory Warning message
FIXTURE LIBRARY	ZOS-2586	Fixture Library too big for ZerOS
CRASH HANDLER	ZOS-2547	Loading show file into Phantom ZerOS crashes it.
CRASH HANDLER	ZOS-2554	Desk crash on setting Move On Dark Delay

Modifications

PATCH	ZOS-2658	Patch Wizard - Numeric Fields should be default
DESK SETUP	ZOS-1077	Screen timeout needs to have a function that disables it.
PATCH	ZOS-2640	Use . as well as / in patch syntax
GENERAL	ZOS-2028	Change Smart Tag default to OFF on Frog 2 / ORB
MONITOR SCREENS	ZOS-2620	Cue Stack Window - Split fade progress bar into attributes
MONITOR SCREENS	ZOS-2590	Cue Stack Window changes
MONITOR SCREENS	ZOS-471	Clicking on a scrollbar doesn't move the scrollbar to that point
REMOTE	ZOS-2310	Remote Scrollbar - allow clicking

New Features

SYNTAX	ZOS-2677	@. should set 0% instantly in syntax
MONITOR SCREENS	ZOS-1677	View Multiple Cue Stack Windows
MFKs	ZOS-2516	Option to switch LCD font sizes
MONITOR SCREENS	ZOS-517	Scrollbars - add arrow buttons
SKIN ENGINE	ZOS-2582	Add Help button to window title bars
FIXTURE LIBRARY	ZOS-2526	Use bitmaps for Details, Fixtures and Manufacturers
MONITOR SCREENS	ZOS-2709	Include Skin file in build
GENERAL	ZOS-2623	Integrate new LCD font

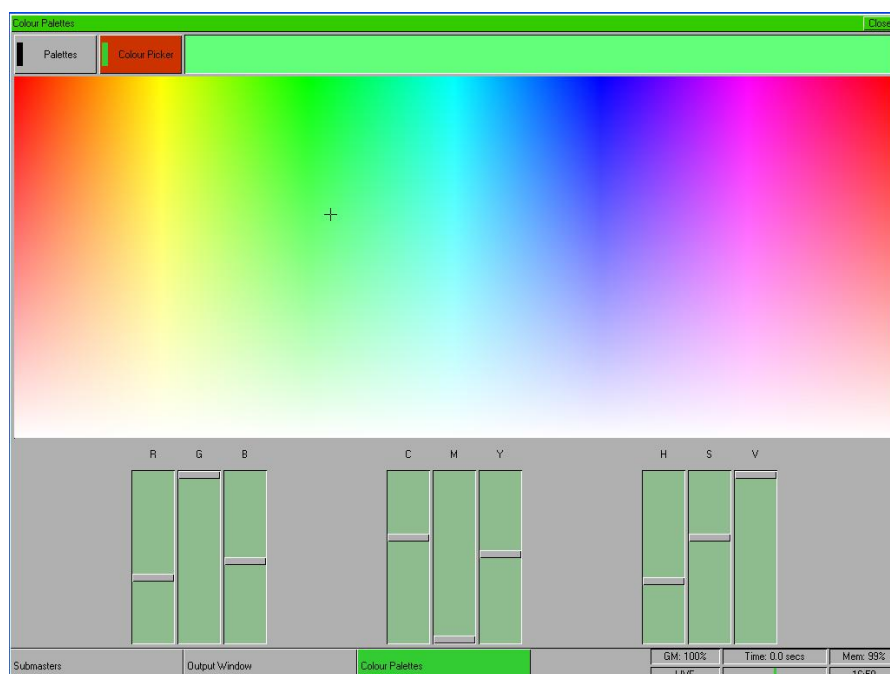
Leap Frog 48 & 96 – Release Notes (Release 4.4)

Release 4.4 is a bug fix version of Release 4.0. These release notes describe the new or modified functionality and bug fixes that have been implemented in the Leap Frog 48 / 96 desk software between versions 3.0 and 4.4.

New Name for Frog X

Frog X has been renamed “ZerOS” and has been rebranded throughout the software. This change is purely a naming change and the software itself is still based upon the same core. Users who previously had installed copies of Phantom Frog X may notice the new installation of Phantom ZerOS will appear in a different folder, so it may be preferable to uninstall your existing installation before beginning installation of Phantom ZerOS. No such problems exist on the desk software, which will behave normally.

Colour Picker



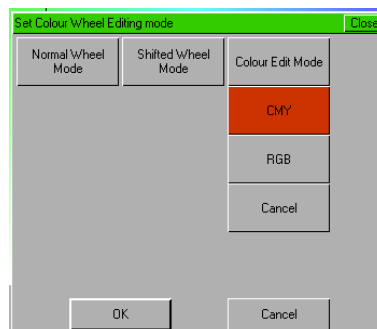
A Colour Picker has been added to the desk. This allows fixtures with either RGB or CMY colour mixing methods to be manipulated using a click and drag interface. The Colour Picker is located as a tab in the ‘Colour Palettes’ screen (SHIFT+COLOUR) and can be used in any of the 9 screen locations.

In order for a fixture to use the colour picker, it must have the SPECIAL flags appropriately set in the fixture library. This has been done for any fixtures within the Zero 88 Fixture Library (now at Release 20). Care should be taken when creating your own fixtures to ensure this flag is set correctly or this functionality may not be available to you. See the Fixture Tools User Guide for full details.

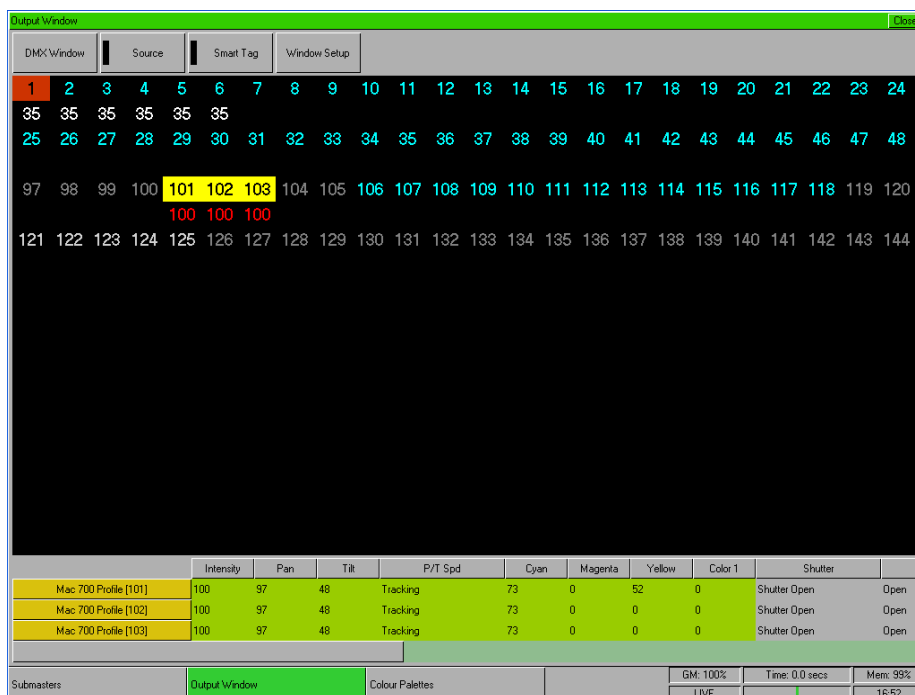
RGB/CMY Editing Modes

It is now possible to manipulate RGB and CMY fixtures using either colour model simply by switching the mode on the desk. To choose the mode you wish to manipulate your fixtures in, hold down SETUP and press COLOUR. Then select {COLOUR MODE} on the MFKs or popup, and select the appropriate mixing method.

Once a mixing method has been selected, the fixture will appear to have these parameters regardless of what actually exists on the fixture (for example, it is possible to have RGB control over a CMY wash light). Throughout ZerOS the fixture will appear as a RGB fixture, but the data will be translated to CMY at the DMX Output stage.

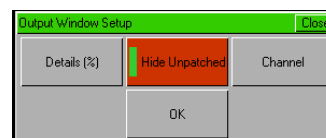


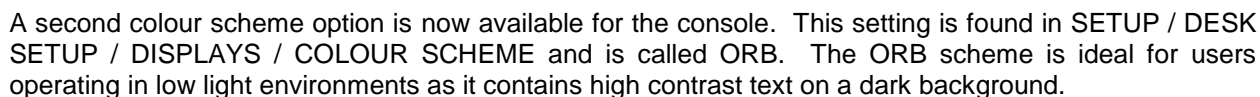
Output Window Changes



The Output Window now displays an additional bar of information for selected fixtures, showing parameter details as in the Program Window. This negates the need to continuously switch between the Program and Output windows when programming with large numbers of fixtures.

Additionally, the Output Window Setup now offers the option to “Hide Unpatched” fixtures using the option in the Window Setup. Unpatched and Unassigned fixtures will be removed from the channel grid and replaced by a vertical line to indicate a gap in the numbering.





Additional Two DMX Universes

An optional upgrade kit is now available to upgrade your Leap Frog 48 & 96 from 2 DMX universes to 4 DMX universes, using the OPTIONAL sockets already fitted to the rear of the desk.

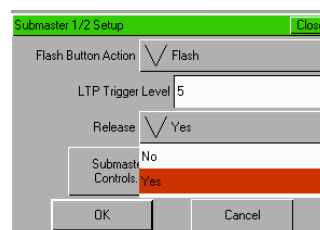
The upgrade kit has an order number of 12-145-99 and is priced at £75 / €97.50 / \$123.75. Once fitted, the options in SETUP / DESK SETUP / OUTPUTS allow you to send DMX data to the additional 2 universes. These options will appear regardless of the presence of the upgrade kit.

Increased Palette Counts

The available number of each type of Palettes / Groups / Macros has been increased from 200 to 400 of each type. These additional palettes appear on MFK pages 11-20.

Submaster Release Options

It is now possible to define whether a submaster is released when it is lowered. This option, found in the Submaster Setup Window, defaults to YES, but can be switched to NO should you wish the Submaster to remain active when the fader is lowered. The behaviour with NO selected mimics with LTP trigger behaviour found on the original Frog range.



Once a submaster has been lowered with Release set to NO, the LCD will continue to display INVERSE to indicate the submaster is still active. It can then be released by holding CLEAR and pressing the Submaster flash button, or all submasters can be released together by holding CLEAR and pressing SUBMASTERS.

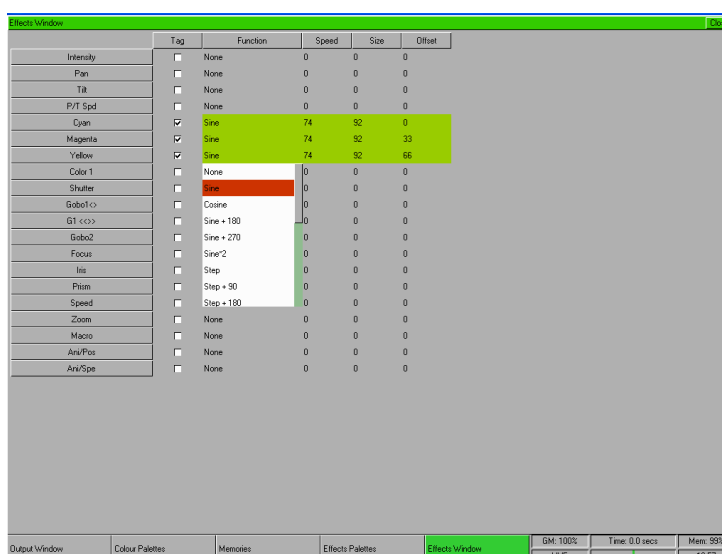
Shifted Preset Selection

It is now possible to select preset channels using their flash buttons, by holding the SHIFT key down when pressing. Selected preset channels can then be manipulated through syntax or with the fixture control wheels as required. This functionality is provided in addition to the Off/Select Flash Mode setting found on SPECIAL Page 1.

Effects Window

A new Effects Editor has been added to the software to allow you to manipulate and create your own effects. This window can be accessed from within the Effects Palette window, by holding SHIFT and pressing EFFECTS, then pressing the {Effect Window} key on the monitor.

The effect window allows manipulation of effect type, size, speed and offset, for each parameter of the fixture. Effects can then be stored as palettes, included in Memories and Submasters. These can be manipulated using the wheels as per the Auto Effects generated by SETUP / PATCH / AUTO MENUS / Create Auto Palettes.

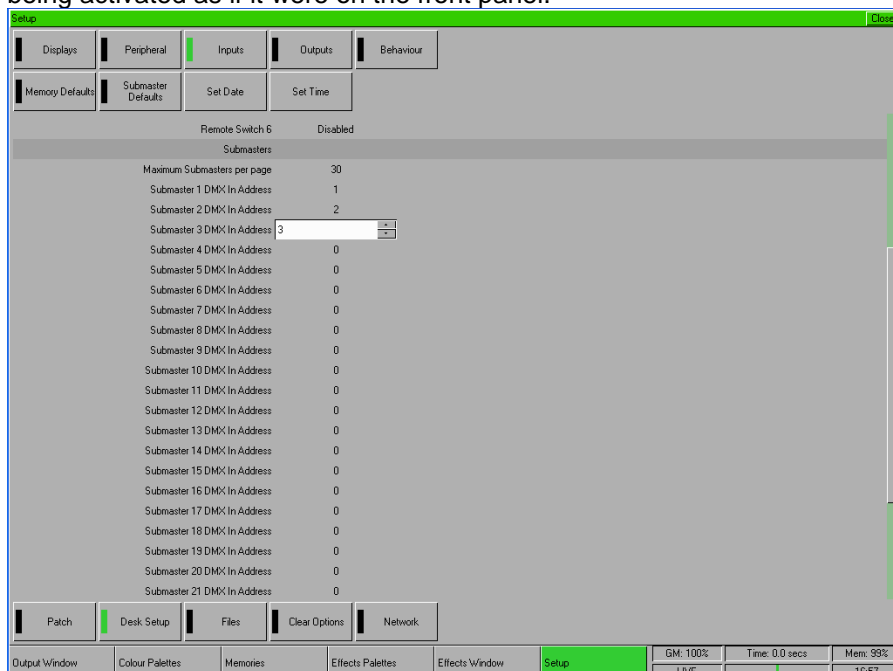


Increased Font Size on the LCDs

Following user feedback, we have switched to a larger font size for the LCDs on the front panel. This change makes the text easier to read.

Submasters with DMX In

It is now possible to control up to 30 submasters on the Leap Frog 48 as well as the Leap Frog 96. The additional 20 submasters on the Leap Frog 48 can be controlled from another DMX source via DMX-In. In SETUP/DESK SETUP/INPUTS, select the Max Number of Submasters you require, and assign a DMX Input address to each fader as required. Changes in the level of this fader will result in the submaster being activated as if it were on the front panel.

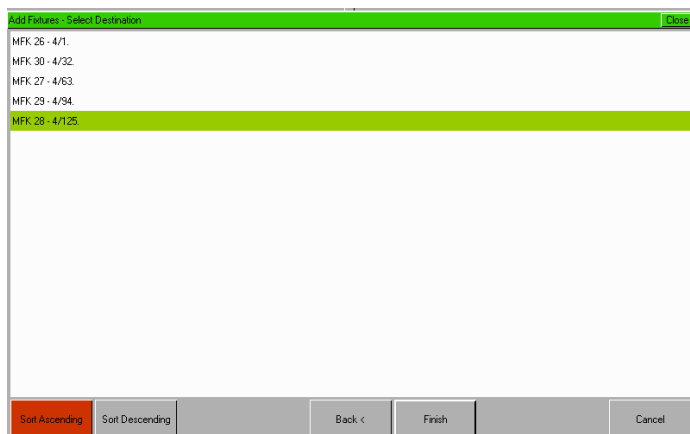


Offline Editor Links to Visualisers

Phantom ZerOS can now talk directly to the latest release of all 3 supported visualisation packages – LightConverse, WYSIWYG and Capture Polar, without the need for a console to be present. This combination allows for true offline pre-programming

MFK Assignment Sequence

The desk will now remember the sequence in which you patch fixtures during the Add Fixtures / Select Destination stage. If you wish to ensure all fixtures are patched in sequence, buttons for Sort Ascending and Sort Descending are available.



Show File Name Remembered

When saving a show, the desk will now remember the show file name you used and prompt you to use it again the next time you save a show.

Auto Palettes for Scrollers

Scrollers can now have auto palettes generated for them. Each frame of the scroller becomes a colour palette, in a similar fashion to the fixed colour wheel of a moving light.

Support for Inverse DMX Parameters

Some fixtures have been found to contain channels which work in the opposite way to the way we would expect – Dimmers where 0% is full brightness and 100% is blackout, for example. These fixtures can now have a flag set in the fixture library for Inverse parameter, and the data will be output in the opposite level to what is programmed on the desk. This allows for the use of these fixtures with functions such as Move On Dark and SmartTag which would otherwise have been inhibited.

An updated version of the Fixture Tools is now available to make this change possible. Log onto <http://support.zero88.com> to download the updated tools.

Bug Fixes

The following bugs have been found and fixed since Version 3.0 software:


ZOS-447	SUBMASTERS	Submasters set to SOLO - don't SOLO
ZOS-1596	OUTPUT WINDOW	Source incorrect for Memory Zero
ZOS-2074	PATCH	Cannot patch to DMX addresses above 510 using Edit Fixtures
ZOS-628	GENERAL	Panel LCD font too small
ZOS-2191	MEMORIES	Cue 0 cannot be selected as the 'next' memory using keypad
ZOS-2063	PLAYBACK	Wrapping round to first memory - fade down times ignored on unprogrammed channels
ZOS-2068	SUBMASTERS	Range Submaster - delete last memory in stack causes crash
ZOS-2067	SUBMASTERS	Range Submaster - Clear Memories causes crash
ZOS-1986	SUBMASTERS	SHIFT + RECORD does not record data to submaster
ZOS-1997	CRASH HANDLER	Crash report
ZOS-1982	CRASH HANDLER	Crash report
ZOS-2062	CRASH HANDLER	Crash report
ZOS-2175	GENERAL	Update - after a source selected, Enter should work
ZOS-2195	GENERAL	Update - arrow keys don't work
ZOS-2045	MEMORIES	Programming a Chase Memory ... jumps after step 2
ZOS-2409	NETWORK	Other protocols default to ArtNet style IP Address in Phantom
ZOS-2413	PROGRAM WINDOW	Output Window Setup
ZOS-2075	REMOTE	Remote - CLEAR button does not work
ZOS-2357	DESK SETUP	LCD Screen controls incorrect
ZOS-372	SETUP	Holding SETUP gives "Desk Lamp Brightness"
ZOS-2347	DESK SETUP	Reloading Windows incorrect if powered off in SETUP mode
ZOS-2397	GENERAL	Error while saving large show files
ZOS-2350	PATCH	Crash Report
ZOS-2349	FILES	Ctrl Key + C on external keyboard causes crash
ZOS-2081	GENERAL	PRINT SCREEN on the external keyboard crashes the desk
ZOS-2302	PALETTES	Colour Palette buttons too big
ZOS-1560	CRASH HANDLER	Crash handler labelled "Frog 2"
ZOS-2377	NETWORK	WYSIWYG Network Settings
ZOS-2069	PLAYBACK	Update - Cue Only - Brightness channels snap out
ZOS-1952	REMOTE	Remote - Palette buttons too big
ZOS-2284	CRASH HANDLER	Crash Report
ZOS-2306	CRASH HANDLER	Crash Report
ZOS-2185	CRASH HANDLER	Crash Report
ZOS-1563	FILES	Update Fixture Library allows User Fixtures to be loaded
ZOS-2177	GENERAL	Updating a submaster releases it
ZOS-2248	MEMORIES	Memory Chase problems
ZOS-2272	MONITOR SCREENS	Windows redraw incorrectly when changing position
ZOS-2197	OUTPUT WINDOW	Cleared Programmer doesn't clear Output Window
ZOS-2167	MEMORIES	Loaded channels colour coding is wrong
ZOS-2245	OUTPUT WINDOW	Channels with no source should be displayed in Black
ZOS-2103	GENERAL	Command line only reaches half way across the screen
ZOS-2060	MEMORIES	Next Memory... outputs only tracking changes
ZOS-943	PHANTOM	Selecting several faders, then dragging them up doesn't work.
ZOS-1999	SUBMASTERS	Range of Memories on a Submaster - LCD Text incorrect
ZOS-2528	DMX IN	DMX In levels should clear to 0 when no DMX In data received
ZOS-2491	OUTPUT WINDOW	Source sometimes displays incorrectly
ZOS-2505	SETUP	Crash on exiting setup
ZOS-2503	EFFECTS	Effects Editor gives CMY for RGB fixtures
ZOS-2507	MEMORIES	Inserting Memory 0.xx gives bad numbering
ZOS-2508	MEMORIES	Chases on memories output incorrect values for unprogrammed channels
ZOS-2523	STARTUP	Slow installation on 1GB Compact Flash
ZOS-2497	SUBMASTERS	Flashing a submaster via DMX In doesn't work
ZOS-2512	SYNTAX	Show Command Line option is forgotten
ZOS-2494	MEMORIES	Crash on creating a chase in Memories

Modifications

ZOS-1757	DESK SETUP	Recovery Mode options
ZOS-2398	GENERAL	Change Frog X name to "ZerOS"
ZOS-2444	HARDWARE	Increase font size on LCDs across the range
ZOS-2450	HARDWARE	Enabled 4 Universe output in software
ZOS-1909	PALETTES	Outputting Palettes - Data for same fixture types
ZOS-146	PATCH	Out of sequence MFK assignment
ZOS-2076	PLAYBACK	Tracking and Jumps in the Memory Stack
ZOS-1512	SUBMASTERS	Submasters - Release option
ZOS-1529	FILES	Desk should remember the current show file name when saving
ZOS-2352	FILES	Saved show already exists warning
ZOS-2364	FIXTURE LIBRARY	Using ext. keyboard as shortcuts in fixture library
ZOS-2395	MAIN LCD	Wheel Control of LCD Brightness/Contrast needs redesigning
ZOS-2121	MONITOR SCREENS	All Close Buttons too wide
ZOS-2211	MEMORIES	After recording a memory with Smart Tags, don't activate the cue
ZOS-1439	GENERAL	Mouse based manipulation of data fields
ZOS-2274	OUTPUT WINDOW	Option to hide unused channels in Output Window
ZOS-2164	SUBMASTERS	Submaster name / instead of -
ZOS-2159	GENERAL	Name Popup keyboard too small
ZOS-2209	MONITOR SCREENS	Some monitor screen areas use incorrect display palettes
ZOS-2208	PALETTES	Palette Windows have too few buttons
ZOS-2119	MONITOR SCREENS	New colour scheme option
ZOS-2130	OUTPUT WINDOW	Show selected channels in Output Window
ZOS-2120	MONITOR SCREENS	Command Line too small
ZOS-1993	GENERAL	New network options - default IP address(es)
ZOS-1269	STARTUP	USB Install Creator - Additional Requirements

New Features

ZOS-277	EFFECTS	Copying an Effect
ZOS-2445	SUBMASTERS	Submasters via DMX In
ZOS-2382	FILES	Warning when loading a show
ZOS-2446	PRESET OPERATION	Shifted Flash Mode – Select
ZOS-1974	PHANTOM	Enable visualiser output from Phantom
ZOS-2183	PALETTES	Increase number of palettes
ZOS-2080	FIXTURE LIBRARY	Add Support for Inverse parameters
ZOS-2288	OUTPUT WINDOW	Output Window 'setup' button
ZOS-1309	PALETTES	Colour Picker
ZOS-2270	SHOWFILE IMPORT	Improve Import of Strand ASCII Showfiles
ZOS-360	Effects	Default effects for RGB fixtures

	<p>For news, views and the latest software visit the Zero 88 Support Forum at: support.zero88.com</p>	<p>Zero 88 Usk House Llantarnam Park Cwmbran Gwent NP44 3HD</p>	<p>Tel: +44 (0)1633 838088 Fax: +44 (0)1633 867880 email: sales@zero88.com Web: www.zero88.com</p>
---	--	---	--