



# LARGE EDUCATION PERFORMANCE SPACE

## Application Guide





# Large Education Performance Space

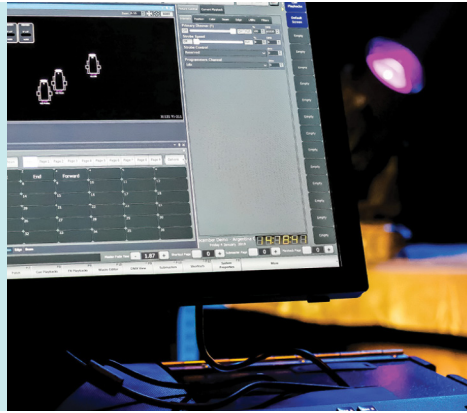
- Performing arts center for education productions
- 1000 seats+
- Professional-level equipment
- Secondary or higher education
- School and community theatre, concerts, and presentations
- Run by teachers, students, or professionals



# Challenge

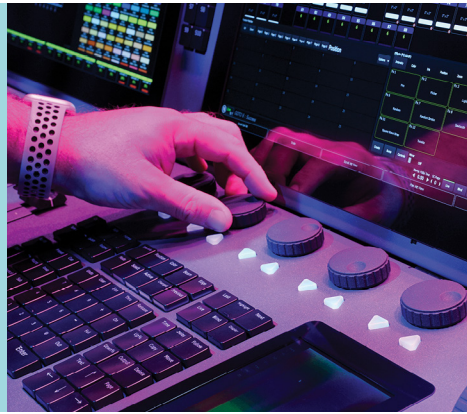
# Solution

Large school theatres are often the second home for many secondary and higher education performing arts programs. These high demand spaces have all the needs of both a traditional school auditorium and a community theatre in a single space.



With an integrated Vari-Lite lighting solution, secondary and higher education institutions can bring an adaptable visual experience perfect for any production.

The sophisticated performances in these spaces often rival regional productions but utilize house lighting systems selected with a fixed budget. Luminaires need to be professional-quality workhorse fixtures, and controls need to be powerful and intuitive without breaking the bank.



The VL600 Acclaim Series offers beautiful color rendering, while the VL1600 Profile gives the perfect look every time. To help student techs get the look they want, the NEO X Series Console offers advanced capabilities in an easy-to-learn format.

To meet the requirements of the many events, large school theatres need a diverse set of theatrical fixtures that can be moved anywhere and full featured moving head luminaires to bring effects and illuminate many different areas of the stage safely without students or staff needing a ladder.



With our full range of fixtures and customizable power solutions, schools can have the fixture they need more places within a space. Networking Nodes then connect your entire solution over a LAN infrastructure using sACN or Art-Net, ensuring affordable control now and in the future.

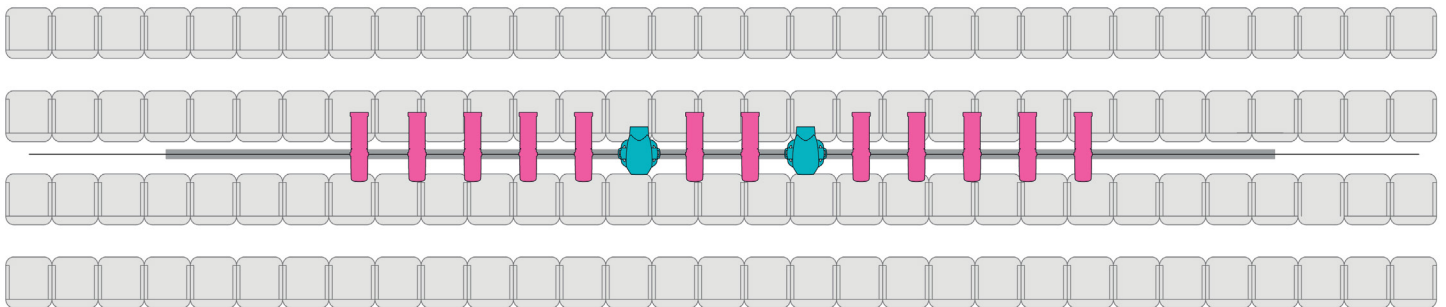
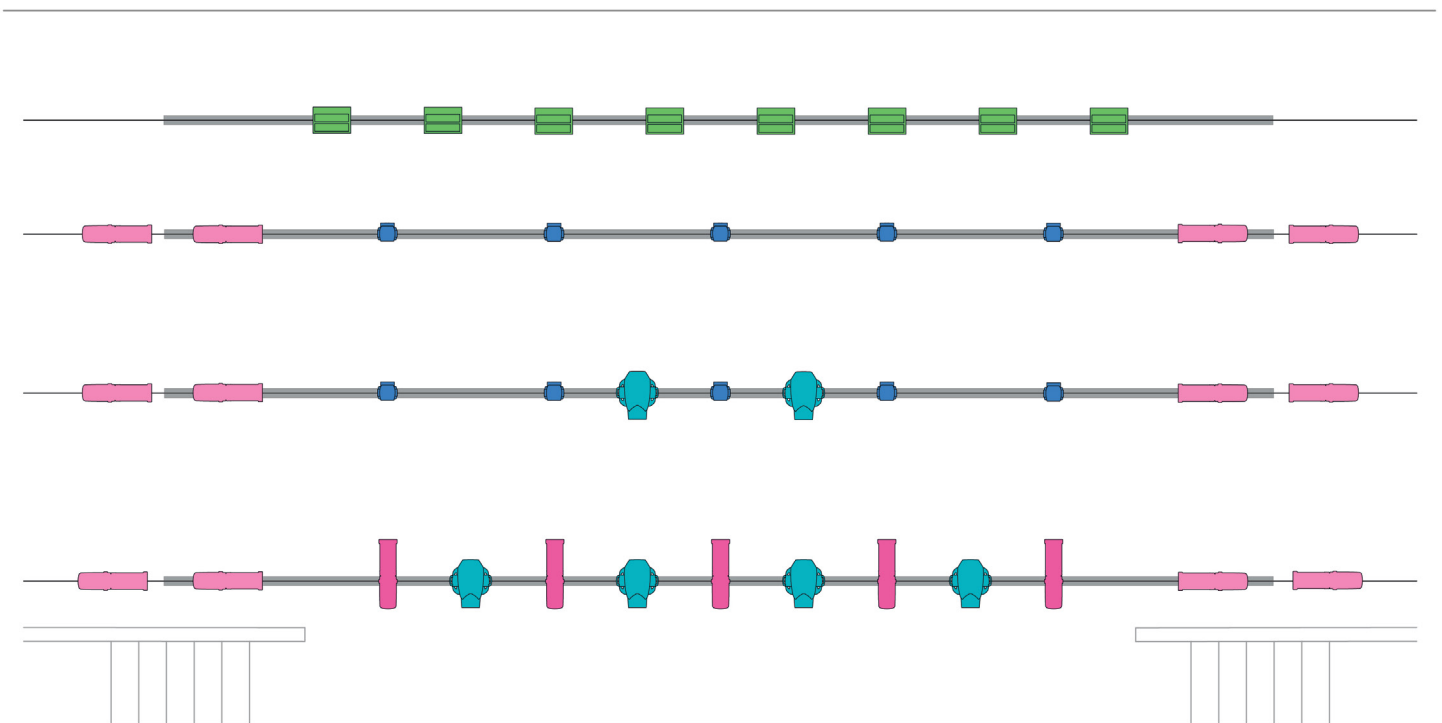
The equipment in large school theatres is often purchased as part of a bond or similar one-time payment. Anything purchased needs to be designed to last for many years.



Known for high-quality, long-lasting products, many of our luminaires and control devices are still in use years, or even decades, after they were first released. With robust features and updatable software, Vari-Lite products are built for the long term.

# LUMINAIRES

- **VL1600 Profile (x 8)** - precision high-output profile luminaire designed for theatre and studio.
- **VL800 EventWash (x 10)** - mid-sized full color LED wash with 7 individually controllable LEDs.
- **VL600 Acclaim Profile, Full Color (x 12)** - professional-grade theatrical profile with wide color spectrum and high CRI.
- **VL600 Acclaim PLE, WW (x 17)** - theatrical profile with high output and fixed warm white source.
- **Coda Cyc (x 8)** - seamless coverage for your cyclorama with high CRI and split-color control.



# CONNECTIVITY (120V)

**Neo X5 Console (x 1)** - high-performance lighting console designed for large facilities.

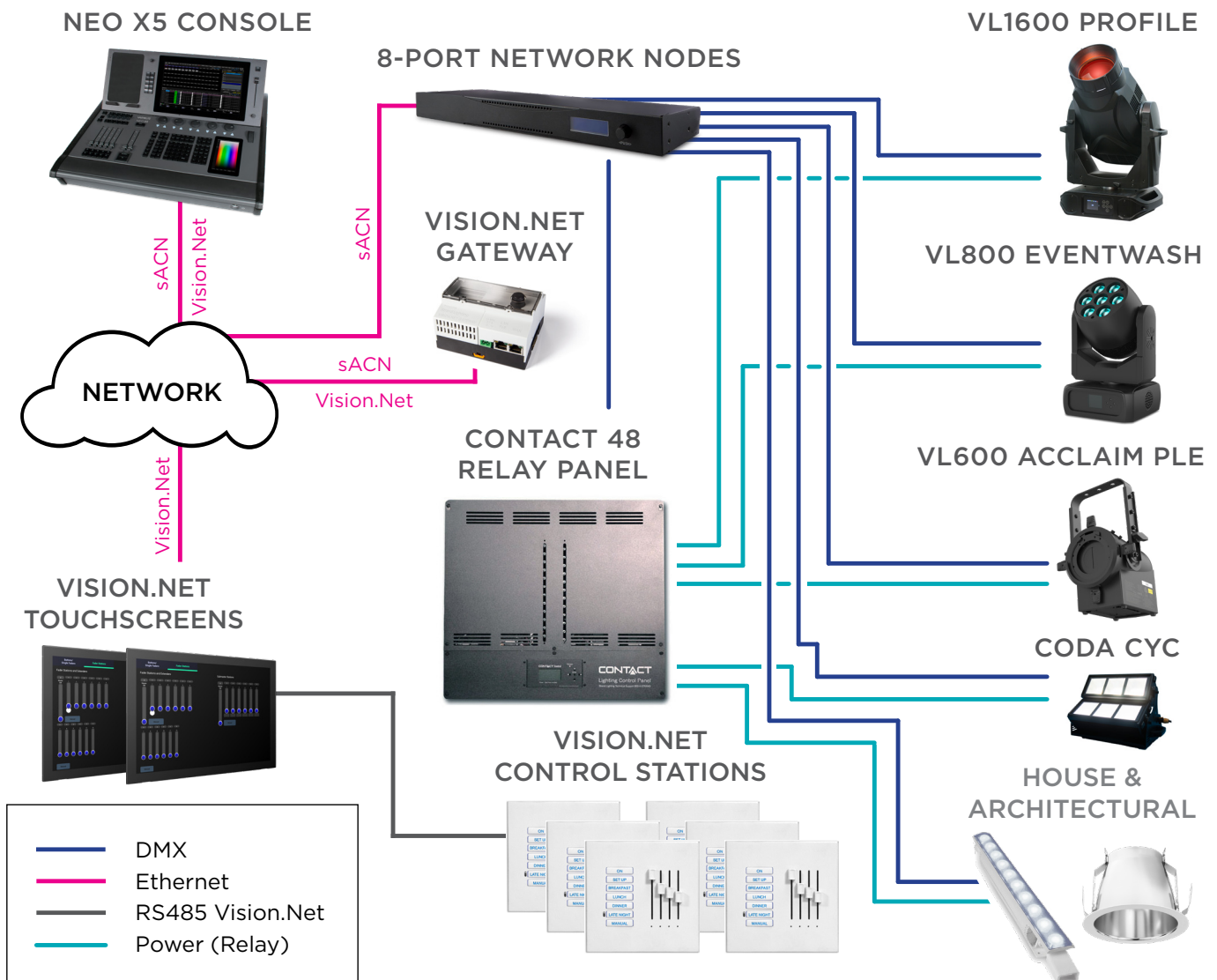
**Vision.Net 10.1" Touchscreen (x 2)** - touch-based panel to control a lighting system.

**Vision.Net Control Station (x 6)** - simple interface for controlling lights during simple events.

**Vision.Net Gateway (x 1)** - DIN-rail mountable gateway for architectural control of house and stage lights.

**Networking Node 8 (x 2)** - configurable 8-port node for DMX-over-IP and Vision.Net bridging.

**Contact 48 (x 1) Relay Panel** - modular panel providing relay-controlled 120V power to fixtures.



# CONNECTIVITY (230V)

**Neo X5 Console (x 1)** - high-performance lighting console designed for large facilities.

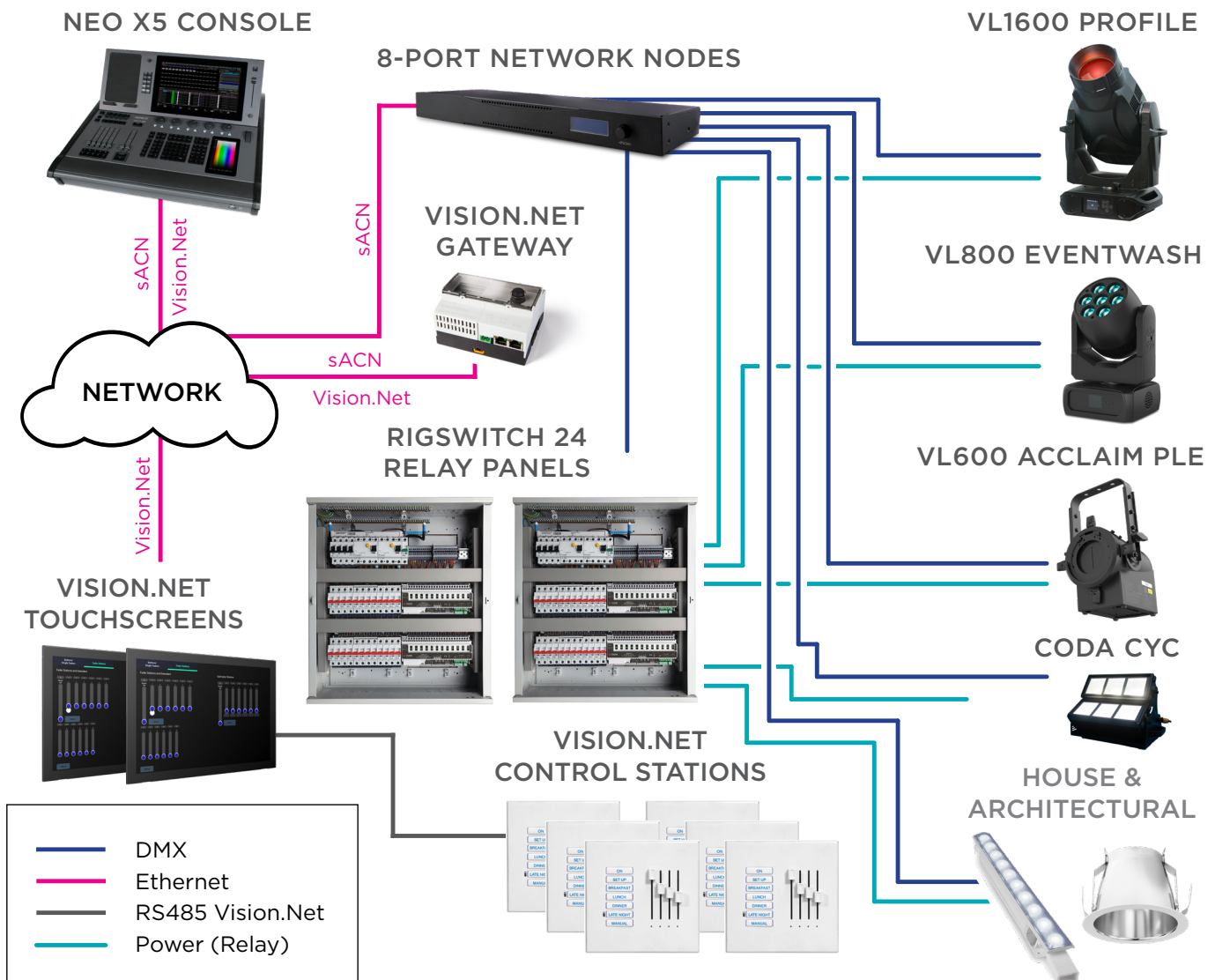
**Vision.Net 10.1" Touchscreen (x 2)** - touch-based panel to control a lighting system.

**Vision.Net Control Station (x 6)** - simple interface for controlling lights during simple events.

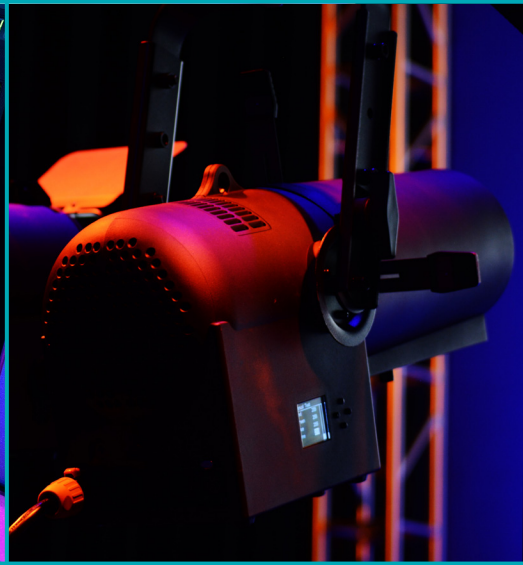
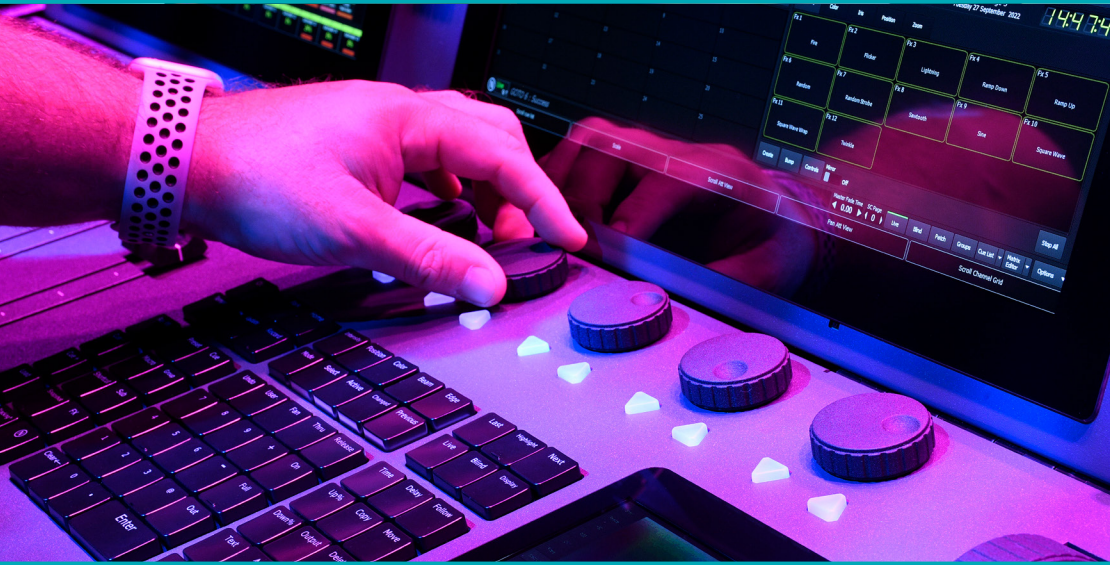
**Vision.Net Gateway (x 1)** - DIN-rail mountable gateway for architectural control of house and stage lights.

**Networking Node 8 (x 2)** - configurable 8-port node for DMX-over-IP and Vision.Net bridging.

**RigSwitch 24 Relay Panel (x 2)** - modular panel providing relay-controlled 230V power to fixtures.







# VARI\*LITE

©2024 Signify Holding. All rights reserved. All trademarks are owned by Signify Holding or their respective owners. The information provided herein is subject to change, without notice. Signify does not give any representation or warranty as to the accuracy or completeness of the information included herein and shall not be liable for any action in reliance thereon. The information presented in this document is not intended as any commercial offer and does not form part of any quotation or contract, unless otherwise agreed by Signify. Data subject to change.

VARI-LITE

[www.vari-lite.com](http://www.vari-lite.com)

March 27, 2024